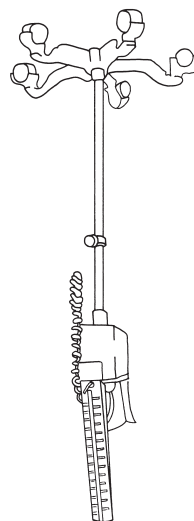
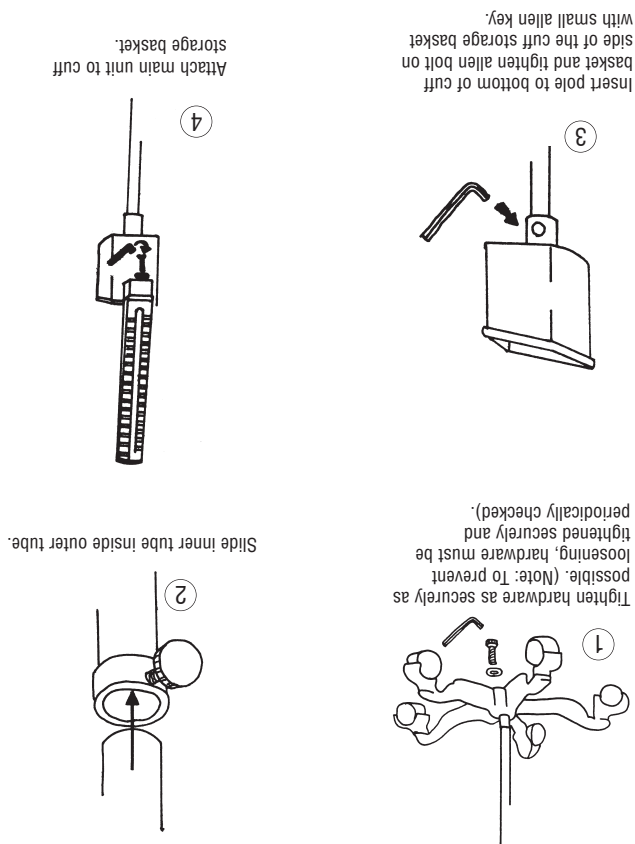
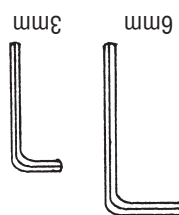


HOW TO ASSEMBLE



Included Tools

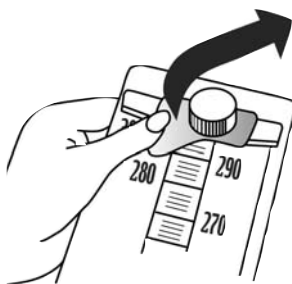


1. With base on its side connect upright outer sleeve to base using large (6mm) allen nut and lock washer as shown. Tighten with large (6mm) allen key provided. *Note: Tighten hex nut securely by applying as much force to allen key as possible.*
2. Turn base upright and slide stainless steel inner tube inside outer sleeve with open end up.
3. Loosen (3mm) allen nut on collar of cuff storage basket with small (3mm) allen key provided. Place cuff storage basket atop stainless steel inner tube making sure the tube goes completely inside collar and tighten allen nut with key.
4. Attach the main unit to the cuff storage basket and secure with large (6mm) allen nut and washers as shown.
5. Adjust height of mercury unit by loosening adjusting screw and raising or lowering inner tube until mercury column is at desired height. Tighten adjusting screw by hand.
6. Carefully remove red connector cap covering reservoir connector at rear of unit. Attach the coiled tubing to reservoir connector on the back of main unit. (Note the coiled tubing may be difficult to connect - moisten with soapy water if necessary). Connect coiled tubing to inflation system. Refer to booklet entitled DIAGNOSTIX 972™ MERCURIAL BLOOD PRESSURE INSTRUMENT for instructions on operating the unit.

MAINTENANCE



To Lock Mercury Within the Reservoir: Tilt the entire unit back 45° towards the reservoir to permit mercury to flow out of cartridge tube and into reservoir. When cartridge tube is completely emptied of ALL mercury (and while it is still tilted 45°), move locking lever to the right "OFF". Mercury should be locked within the reservoir during maintenance or transport. To release mercury, move lever to "ON" position. If necessary, tilt unit towards tube to allow mercury to flow out of reservoir.



Lift on the spring loaded EZ-Tube™ mechanism located at the top of the instrument. Tilt instrument forward to free tube. If necessary use a small flathead screwdriver to help dislodge the top of the tube. To replace tube, lift EZ-Tube™ mechanism and insert base of tube into main unit, being sure graduation marks face out. Next, position top of tube and release EZ-Tube™ mechanism.

To Register Your Product, visit us at www.adctoday.com and follow the links



ADC
55 Commerce Drive
Hauppauge, NY 11788
ADC (UK) Ltd.
Unit 6, PO14 1TH
United Kingdom

tel: 631-273-9600, 1-800-232-2670
fax: 631-273-9659
www.adctoday.com
email: info@adctoday.com

Printed in U.S.A.
©2007 ADC

DIAGNOSTIX™ 972

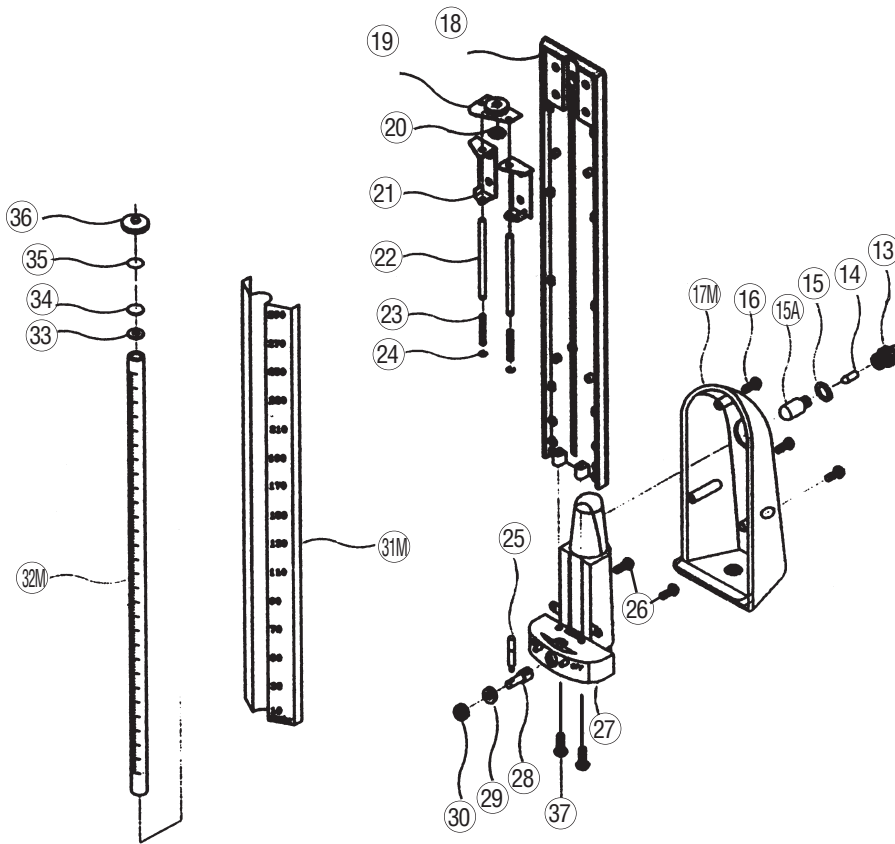


- Assembly Instructions
- Schematics
- Parts List



SCHEMATIC PARTS LIST

972 UNIT



Ref #	Item #	Description
13	952-109	Reservoir Connector
14	952-110	Cotton Filter
15	952-111	Reservoir Connector Gasket
15A	952-112	Reservoir Feeder Tube
16	952-113	Reservoir Cover Screws (3)
17M	972-114	Reservoir Cover
18	952-115	Scale Plate Holder
19	952-116	Cartridge Top Plate
20	952-117	Rubber Gasket
21	952-118	Reservoir Holder for Top Plate
22	952-119	Rods (2)
23	952-120	Springs (2)
24	952-121	Locking Washers (2)
25	952-122	Locking Lever Handle
26	952-123	Reservoir Screws (2)
27	952-124	Reservoir Tank
28	952-125	Reservoir Rod
29	952-126	Bushing
30	952-127	Locking Screw (1)
31M	972-128	Scale Plate
32M	972-129	Graduated Plastic Cartridge Tube
33	952-130	Rubber Gasket
34	952-132	Filter Plug
35	952-131	Diaphragm
36	952-133	Screw Cap
37	952-134	Reservoir Base Screws (2)

CONNECTING THE INFLATION SYSTEM TO MANOMETER

Remove red safety cap which seals the reservoir containing mercury. Attach free end of reservoir tube securely to air inlet. Save red safety cap for later use. When transporting mercury instrument we recommend placing the red safety cap on reservoir.

Please Note: It is normal for negligible amounts of residual mercury droplets to accumulate around the air inlet beneath the red safety cap during transportation.

ROD & BASE ASSEMBLY FOR 972

Ref #	Item #	Description
1	972-101	Center Pole Screw and Washer (1)
3	972-080	Complete 5 Leg Base
6	972-106	Casters (5)
7	972-107	Outer Pole
7A	972-107A	Rubber Gasket
8	972-108	Knob
9	972-109	Spring
10	972-110	Inner Pole
11	972-111	Tightening Device
12	972-112	Basket
12B	752-114	Manometer Mounting Hardware
N/A	972-106-1	Single Caster

