

Welch Allyn PCH100 and PCH200 Installation Guide

TABLE OF CONTENTS

1. BEFORE INSTALLING2

2. INSTALLATION CHECKLIST2

3. INSTALL HOLTER APPLICATION.....5

4. INSTALLING THE USB BLUETOOTH ADAPTER.....10

5. INSTALL SD CARD READER17

6. USB HIBERNATION.....17

Reorder No. 706063

006-700-0075-B



Advancing Frontline Care™

Welch Allyn PCH100 and PCH200 Installation Guide

Before Installing

Overview: Please read the entire installation instructions before proceeding with the installation.

NOTE: Follow the steps below sequentially:

1. Complete Installation Checklist
2. Install Holter application
3. Turn off USB Port Hibernation
4. Install USB Bluetooth Adapter
5. Install SD Card Reader
6. Start-Up Application
7. Finished

1. Installation Checklist

Overview: The Installation checklist helps evaluate the PC system to determine which components are required. Steps are outlined below;

- Determine PC Operation System and service pack
- Determine McAfee antivirus version
- Determine if other Bluetooth devices are already installed

The minimum Operating Systems and Service Packs are below. If your system does not have the following minimum requirements, select alternate system for installation.

- Microsoft 2000 Operating System with SP4 or higher
- Microsoft XP Operating System with SP1, SP2 or higher.

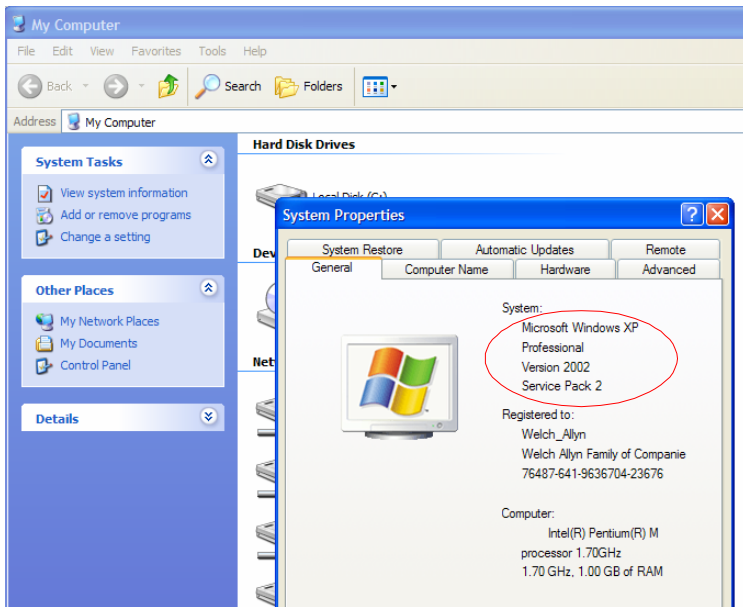
1.1 Determine Operating System and Service Pack

1. Go to My Computer.
2. View System Properties. (You may upgrade Service Packs from Microsoft website at no cost.) – Note: this may take several hours.

Enter OS Version: _____

Enter Service Pack Number: _____

Welch Allyn PCH100 and PCH200 Installation Guide



1.2 Determine McAfee Antivirus Version

McAfee Antivirus software versions prior to version 11 cause compatibility issues with USB Bluetooth Device.

To determine if McAfee is running look in the bottom right corner (task bar)




of the display for this icon. Highlight, right-click and view **About**.

The options are:

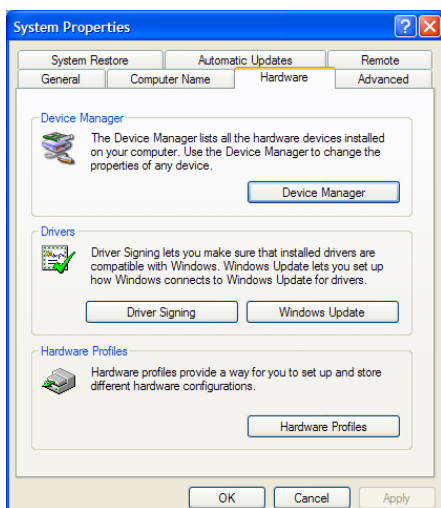
- Upgrade to version 11.0 or higher
- Remove McAfee and purchase another antivirus program.
- Leave as is – will require installation of USB Bluetooth Adapter software

Welch Allyn PCH100 and PCH200 Installation Guide

1.3 Determine if Other Bluetooth Devices Are Already Installed

Look for Bluetooth devices that may be installed on this computer. Look in the bottom right corner of the display for this icon . Highlight, right-click and select disable. If no Bluetooth symbols display, go to:

- ❖ My Computer – View System Properties
- ❖ Select the Hardware tab



- ❖ Click on the Device Manager

Welch Allyn PCH100 and PCH200 Installation Guide



Note: You will see a Bluetooth Icon in the Device Manager if any Bluetooth Devices exist.

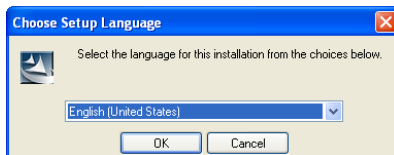
2. Install Holter Application

Overview:

- Insert CD
- Select Installation Language
- Install .Net Framework
- Install Application
- Install MSDE Database
- Finish

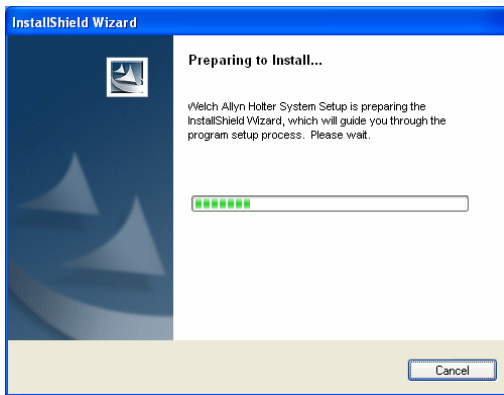
2.1 Insert the CD into the CD ROM Drive. Select the Language to install and click **OK**.

Note: If installation program does not start up Select Start > Run. Then enter "D:\Setup.exe" or browse the CD drive and select the "Setup.exe" program.



Welch Allyn PCH100 and PCH200 Installation Guide

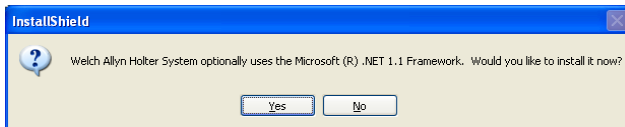
2.2 The following screen displays after the language is selected.



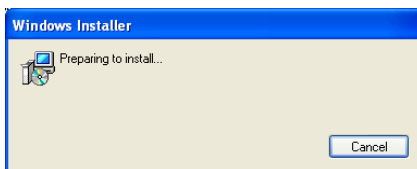
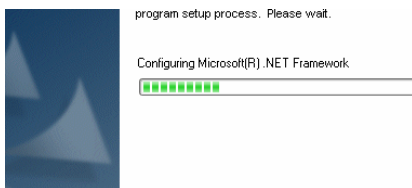
2.3 If your system does not have .NET Framework, the following message displays.

Note: If prompted you will need to select to install the .Net framework version 1.1

Note: If prompted to choose between .Net 1.1 or 2.0, select 1.1. The system can support both versions of .Net concurrently.



2.4 If you click **Yes**, the following sequence of screens displays. **NOTE:** The .NET Framework installation takes several minutes and prompts you to restart your computer.



Welch Allyn PCH100 and PCH200 Installation Guide

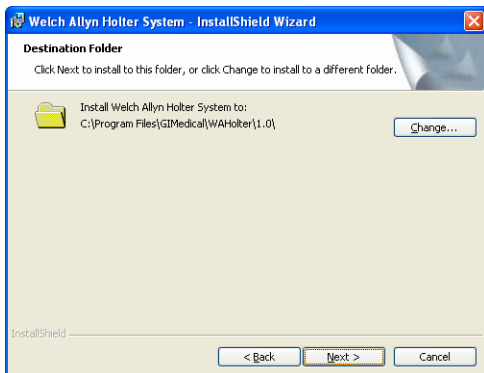
- 2.5 Click **Restart**. CAUTION: Do not remove the Install CD from the drive. When the computer restarts, the installation resumes.



- 2.6 Click **Next** the following screen appears:

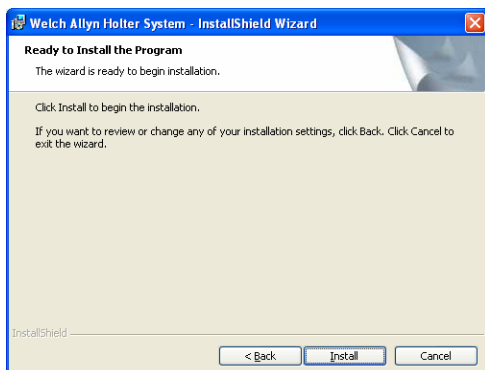


- 2.7 Click **Next**.

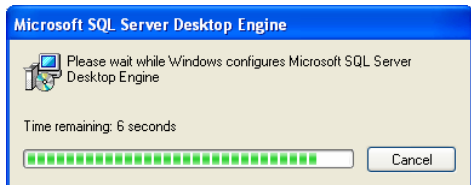
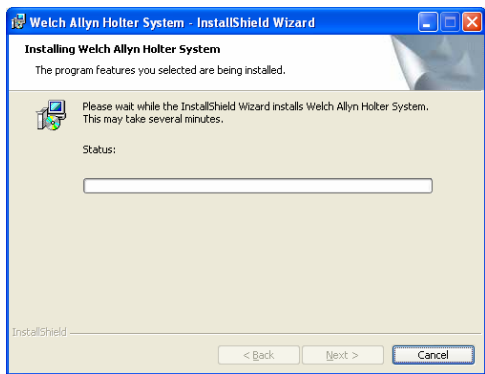


Welch Allyn PCH100 and PCH200 Installation Guide

2.8 Click Install.

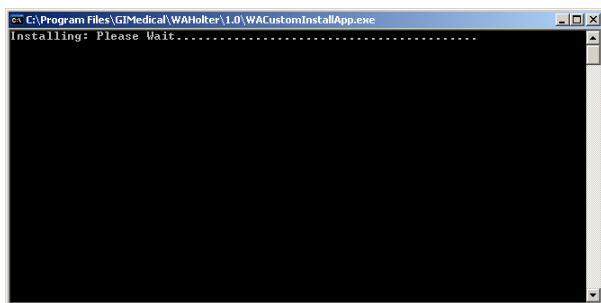


2.9 The following sequence of screens displays as the program installs.



Welch Allyn PCH100 and PCH200 Installation Guide

2.10 The following screen displays. It will automatically close when it completes.



2.11 Click **Finish** when the following screen appears.



2.12 The Welch Allyn Holter software is now installed.

Welch Allyn PCH100 and PCH200 Installation Guide

3. Installing the USB Bluetooth Adapter

NOTE: The Welch Allyn Holter Application must be installed before proceeding with this section.

Overview: The Bluetooth adapter allows the Welch Allyn Holter Software to communicate with Holter recorders through a wireless connection.

Determine Bluetooth Adapter Installation Requirement

Based on the results of installation checklist and using the tables below, determine which Bluetooth installation step to use – the options are:

Step 3.1 uses Window XP SP2 built-in support

OR

Step 3.2 uses Bluetooth Software on provided on Belkin CD

If a Welch Allyn Bluetooth adapter has already been installed on the system, and has been previously working, there is no need to reinstall the Bluetooth software and proceed directly to step 5.

NOTE: always use step 3.1 unless one of the configurations in the tables below exists. If the system has a configuration listed in the tables below then you should use only step 3.2.

Operating System	
2000 SP 4	STEP 3.2
XP SP1	STEP 3.2

Operating System	MacAfee Version < 11.0	Other Bluetooth Already Installed
XP SP2	STEP 3.2	STEP 3.2

step 3.1 (Uses Window XP SP2 built-in support)

step 3.2 (Use Bluetooth Software provided on Belkin CD)

NOTE: Due to circumstances beyond our control the windows built-in support, for Windows XP (SP2), may not work correctly. In this situation we recommend following step 3.2.

NOTE: Do not plug the USB Bluetooth Adapter into the computer until requested.

Welch Allyn PCH100 and PCH200 Installation Guide

NOTE: USB Adapter PC Port – the preferred scenario is to select a PC USB port on the front of the PC. If one is not available, select an available port on back of the PC. Make sure no AC Power cords or other electrical wires are close to the USB Adapter. Such items will limit the effective distance between the recorder and the PC

NOTE: Bluetooth Wireless Communication – Bluetooth wireless communication is more effective if a line of site can be established between the USB adapter and the recorder. The patient, other users or physical obstructions should not be placed between the USB adapter and the recorder. Doing so will limit the effective distance between the recorder and the PC. The recorder should be no less than one foot from the adapter and should be no more than 10 feet from the adapter.

3.1 Using Window XP SP2 USB Adapter Software (Built-in Support)

NOTE: Do not install the driver from the Belkin CD that comes with the Bluetooth Radio. This may render your system inoperable for Bluetooth communication to the Holter recorder.

Note: Depending on which USB Belkin Adapter is contained within your Welch Allyn Holter kit, you may see one of the following behaviors. If you don't see figure 1 below go to page 15 (**Setting up the Bluetooth F8T081V or F8T082V Dongle**)

Setting up the Bluetooth F8T012V or F8T013V Dongle

- Insert the Bluetooth dongle into an available USB port. The Windows operating system attempts to recognize the device and will prompt the user that the new hardware has been found and needs to be updated as shown in figure 1.



Figure 1 – Found New Hardware

- This dialog box has three options in order to proceed. Choose the last option, “No, not this time” as shown in figure 1 and click the “Next >” button.

Welch Allyn PCH100 and PCH200 Installation Guide

- Another screen will be displayed showing the name of the device being installed, “Belkin Bluetooth Adapter 12” and asks the user whether to automatically or manually search for drivers as shown in figure 2.

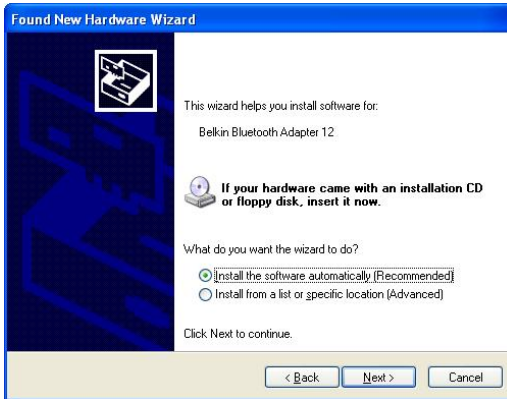


Figure 2 – Search for Driver

- Choose the “Install the software automatically [Recommended]” option as shown in figure 2 and click **Next** button.
- Windows begins searching for and copying the necessary driver files. Figure 3 shows an example of what this looks like.



Figure 3 – Copying Files

Welch Allyn PCH100 and PCH200 Installation Guide

- When copying has completed, the user will be prompted that the installation is finished as seen in figure 4. Click **Finish** to continue.



Figure 4 – Installation Finished

- After this screen closes, the Windows operating system will then have to install one more driver for the Bluetooth Enumerator. The same screen seen in figure 1 will be displayed again. Repeat the step shown in figure 1 by choosing “No, not this time” and clicking “Next >” to continue.

Note: You may not need to continue section 3.1. If the following screen doesn't appear you can proceed to step 4.

- The next screen, figure 5, will appear just like the screen seen back in figure 2. However, the software being installed will now say “Microsoft Bluetooth Enumerator”.



Figure 5 – Installing Bluetooth Enumerator

- Again, choose to “Install the software automatically [Recommended]” and then click “Next >” to continue.

Welch Allyn PCH100 and PCH200 Installation Guide

- Once again the necessary files will begin copying. The process should not take long.
- After this has completed, the completed installing new hardware screen will appear as shown in figure 6. Click “finish” to complete the driver installation.



Figure 6 – Installation Complete

- Installation of the Bluetooth adapter is now complete and the Holter System can be run using the installed dongle.

Welch Allyn PCH100 and PCH200 Installation Guide

Setting up the Bluetooth F8T081V or F8T082V Dongle

- Insert the Bluetooth dongle into an available USB port. Once inserted the system should recognize the device and start loading the appropriate drivers.



System notifies that device is ready for use

Once the following message appears the Bluetooth Configuration is complete. Proceed to step 5 to install SD card reader. Skip step 3.2, as it does not apply to the current system configuration.



Welch Allyn PCH100 and PCH200 Installation Guide

NOTE: If you see other messages than those shown above, the device failed to be recognized properly. Below are some of the messages that may occur if the system failed to recognize the device. The reason for this can be that the device was already installed or that some other Bluetooth device is blocking it from recognizing the device. **This problem must be resolved before continuing.** Refer to section 8.0 for details on how to resolve Bluetooth adapter discovery issues.



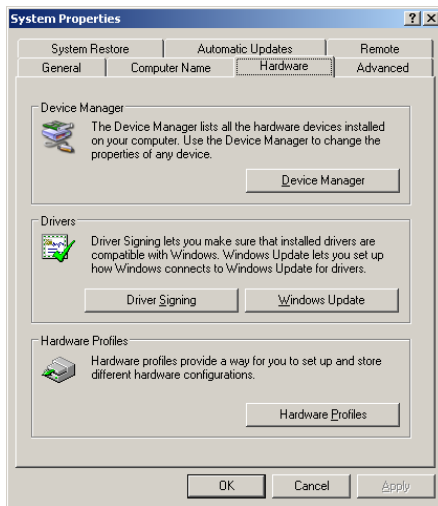
System notifies that device is ready for use

Once the following message appears the Bluetooth Configuration is complete. Proceed directly to step 5 to install SD card reader. Skip step 3.2, as it does not apply to the current system configuration.

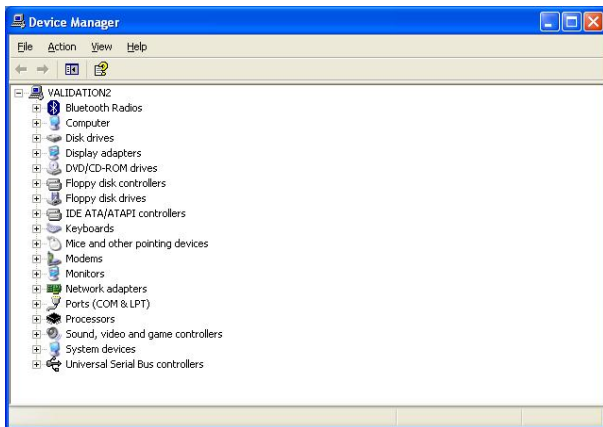


Welch Allyn PCH100 and PCH200 Installation Guide

5.2 Select the **Hardware** tab on the **System Properties** screen.

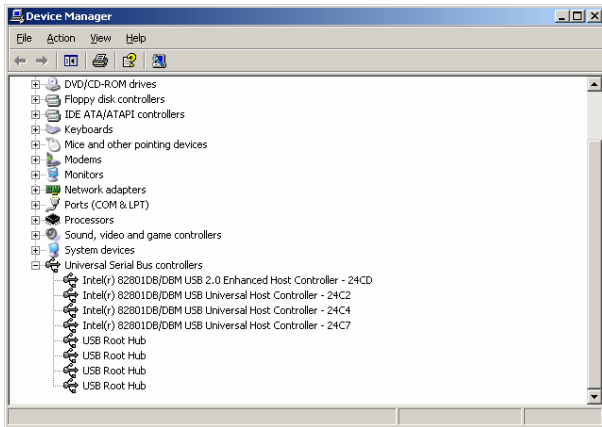


5.3 Click the **Device Manager** button.



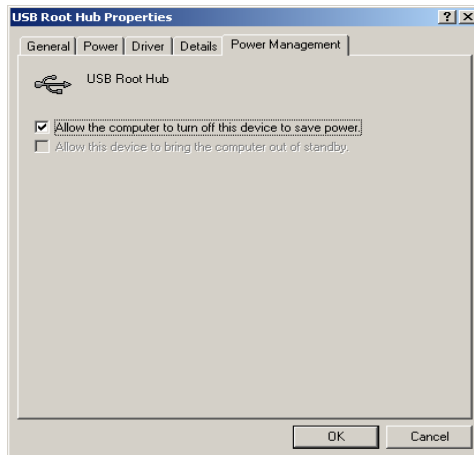
Welch Allyn PCH100 and PCH200 Installation Guide

5.4 Click the plus sign (+) next to **Universal Serial Bus Controllers**.



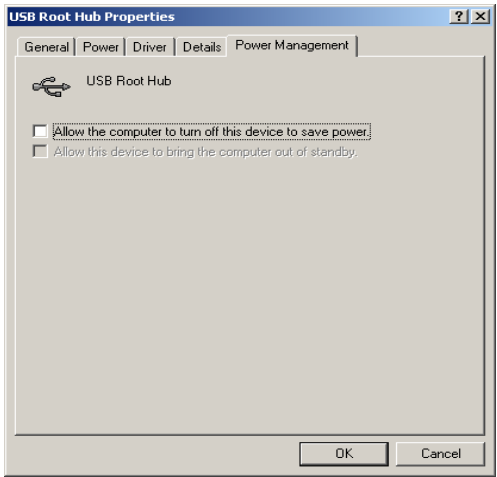
5.5 Complete the following steps for each of the USB Root Hub Entries.

- right click
- select **Properties**
- select **Power Management** tab



5.6 Uncheck the **Allow the computer to turn off this device to save power** check box and click **OK**.

Welch Allyn PCH100 and PCH200 Installation Guide



5.7 Once you have completed all USB Root Hub modifications you can use the Welch Allyn Holter application.

Welch Allyn PCH100 and PCH200 Installation Guide

PCH100/200 Standalone Installation Check-off Sheet

Customer Information

1. Name: _____
2. Contact Person: _____
3. Phone Number: _____
4. Address: _____
5. City: _____
6. State: _____
7. Country: _____
8. Installation Completed By: _____

Evaluate PC System

1. Determine Operating System: _____
2. Determine Operating System Service Pack: _____
3. Determine if Bluetooth Radio Already Installed: _____
4. Determine if McAfee Antivirus Program Installed: _____ Version: _____

Installation

Passed

5. Install Welch Allyn Holter System: _____
6. Install and Configure USB Bluetooth Adapter: _____
7. Install SD Card Reader: _____
8. Disable USB Hibernation: _____
9. Start Up Welch Allyn Holter Application: _____
10. Activate Product License: S/N: _____
11. Perform Test Startup: _____
12. Perform SD Card Upload: _____
13. Edit Report: _____
14. Print Report: _____