

Changing Color Panels Spitfire EX 1420

ActiveCare Medical

Your Spitfire EX 1420 mobility scooter features interchangeable panels which allow you to change the color of your scooter. The panel colors included are Metallic Red, Blue and Silver.

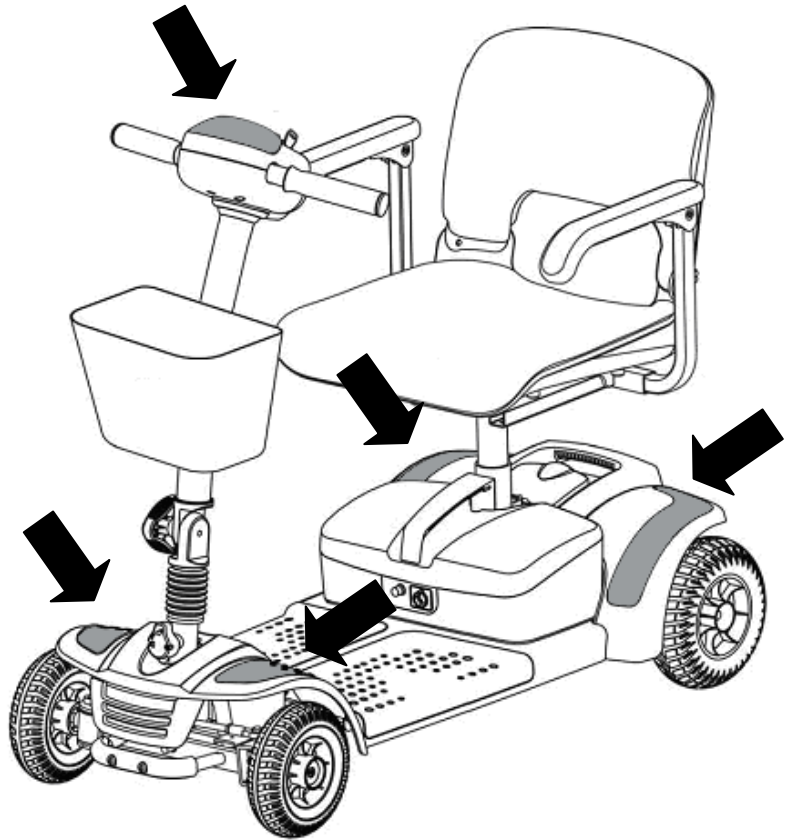
Your Spitfire EX comes with one set of panels pre-installed. The remaining two sets of color panels are packaged with the scooter.

These instructions will guide you through the process of changing the panels. The panels that can be changed are indicated in the illustration at the right.

Tools Required:

- Phillips screwdriver
- Socket wrench
- 10mm socket
- 19mm socket

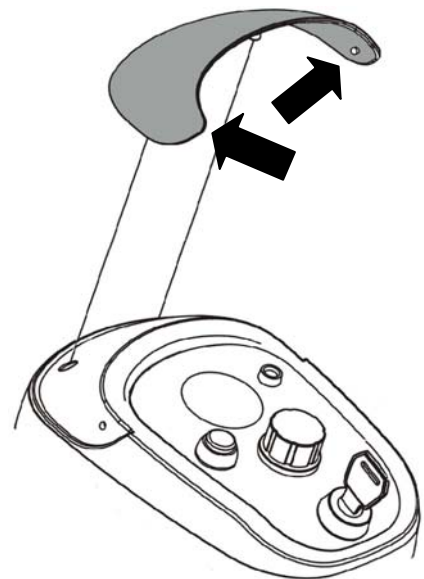
Note: The color panels can crack or break if excessive force is used when replacing them. Please use caution.



To replace the tiller color panel

Using your thumbs, press the tiller panel outward at the locations indicated until the side edges pop out. Gently grip the top of the panel and lift upward until the panel lifts off the tiller.

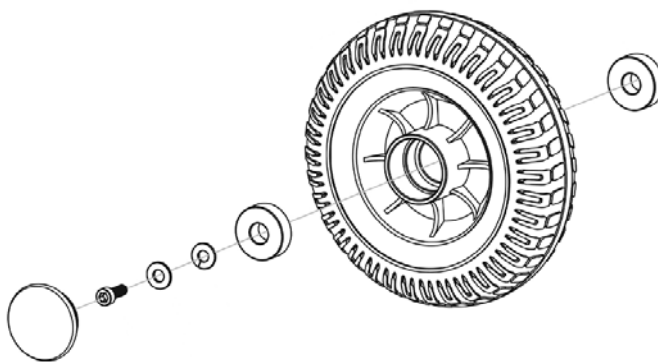
Insert the new color panel into place so that the two pegs on the underside of the panel fit into the corresponding holes in the tiller. Push in on the sides of the panel until they click into place.



Replacing the front fender color panels – *Perform this procedure for each front fender color panel.*

The front wheels must be removed in order to replace the front fender color panels. Firmly grasp and pull the plastic hubcap to remove it from the center of the wheel, revealing the bolt underneath.

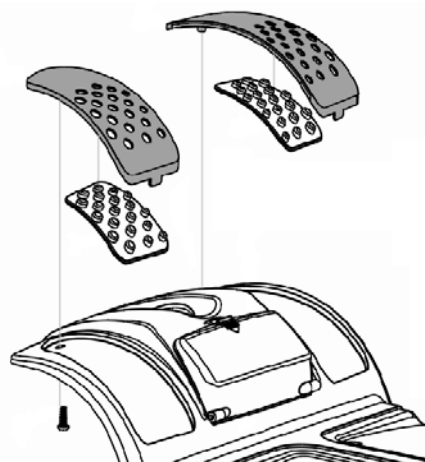
Using a 10mm socket wrench, remove the bolt holding the wheel in place. Take care not to misplace all washers so that they can be returned to their proper place when the wheel is replaced.



After removing the wheels, prop up the scooter so that the underside of the front end is accessible. Using a Phillips screwdriver, remove the screw holding the color panel in place. After the screw has been removed, lift up on the color panel to remove it.

Insert the black rubber footplate into the new color panel before the color panel and set the color panel/rubber footplate assembly into place, making sure to insert the tabs of the color panels into the corresponding slots on the scooter body.

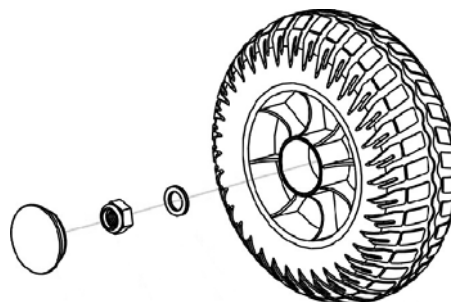
Affix the color panel assembly to the scooter using the screw removed previously and replace the wheels.



Replacing the rear fender color panels – *Perform this procedure for each rear fender color panel.*

The rear wheels must be removed in order to replace the rear fender color panels. Firmly grasp and pull the plastic hubcap to remove it from the center of the wheel, revealing the bolt underneath.

Using a 19mm socket wrench, remove the bolt holding the wheel in place. Take care not to misplace the washer so that it can be returned to its proper place when the wheel is replaced.



After removing the wheels, prop up the scooter so that the underside of the rear end is accessible. Using a Phillips screwdriver, remove the screw holding the color panel in place. After the screw has been removed, lift up on the color panel to remove it.

Set the color panel into place, making sure to insert the tabs of the color panels into the corresponding slots on the scooter body.

Affix the color panel assembly to the scooter using the screw removed previously and replace the wheels.

