



Multiple configurations to meet your unique needs.

*i*Screen[®] Dx Dip Card

Urine Drug Screening Device.



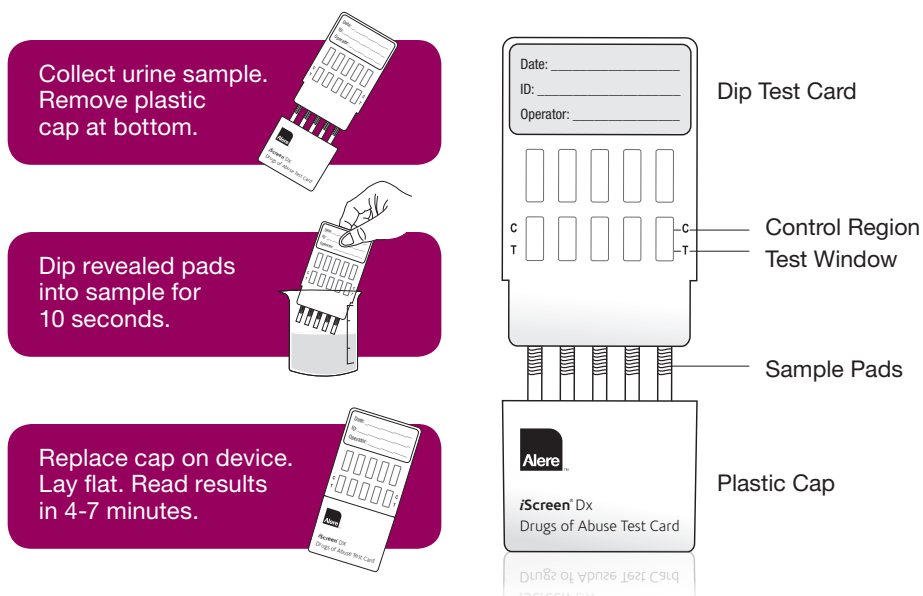
Substance abuse testing with more substance.

How it works.

PRODUCT TRAINING AND
CERTIFICATION AVAILABLE ONLINE.

Features & Benefits

- » Rapidly screen for a broad range of illicit and prescription drugs
- » FDA 510(k) Cleared and CLIA Waived
- » 1-12 configurations available for a fully customizable urine testing program
- » Simple procedure: collect, dip and read—results in as little as 4-7 minutes
- » Test device remains in control of administrator
- » Long shelf-life



PRODUCT PROCEDURE NOTE: Refer to product insert for complete instructions, limitations, and warnings.

For in vitro diagnostic use only. This assay provides only a preliminary analytical test result. A more specific alternate chemical method must be used in order to obtain a confirmed analytical result. Gas chromatography/mass spectrometry (GC/MS) is the preferred confirmatory method. Clinical consideration and professional judgement should be applied to any drug of abuse test result, particularly when preliminary positive results are indicated.

Single Drug Configurations

Item #	iScreen® Dx (Dip Card)
IS1 AMP-DX	Amphetamine (AMP) Single Dip Device
IS1 BAR-DX	Barbiturate (BAR) Single Dip Device
IS1 BZO-DX	Benzodiazepine (BZO) Single Dip Device
IS1 COC-DX	Cocaine (COC) Single Dip Device
IS1 MET-DX	Methamphetamine (mAMP) Single Dip Device
IS1 MOP-DX	Morphine (MOP 300) Single Dip Device
IS1 MTD-DX	Methadone (MTD) Single Dip Device
IS1 OPI-DX	Opiate (OPI 2,000) Single Dip Device
IS1 OXY-DX	Oxycodone (OXY) Single Dip Device
DPC-114-DX	Phencyclidene (PCP) Single Dip Device
IS1 MDM-DX	Ecstasy (MDMA) Single Dip Device
IS1 TCA-DX	Tricyclic Antidepressants (TCA) Single Dip Device
IS1 THC-DX	Marijuana (THC) Single Dip Device

Multi-drug Configurations

Item #	iScreen® Dx (Dip Card)
IS5 M-DX	AMP, COC, mAMP, OPI, THC
IS10-22015-DX	AMP, BAR, BZO, COC, mAMP, MDMA, MTD, OPI, PCP, THC
IS10-2210-DX	AMP, BAR, BZO, COC, mAMP, MDMA, MOP, MTD, PCP, THC
IS10-DX	AMP, BAR, BZO, COC, mAMP, MOP, MTD, OXY, TCA, THC
IS12-DX	AMP, BAR, BZO, COC, mAMP, MDMA, MOP, MTD, OXY, PCP, TCA, THC

Drugs of abuse abbreviations and cutoffs: Amphetamine (AMP 1000 ng/mL), Barbiturates (BAR 300 ng/mL), Benzodiazepines (BZO 300 ng/mL), Cocaine Metabolites (COC 300 ng/mL), Marijuana (THC 50 ng/mL), MDMA (Ecstasy 500 ng/mL), Methadone (MTD 300 ng/mL), Methamphetamine (mAMP 1000 ng/mL), Opiates (OPI 2000 ng/mL), Oxycodone (OXY 100 ng/mL), Phencyclidine (PCP 25 ng/mL), Tricyclic Antidepressants (TCA 1000 ng/mL).

