

**NEW & IMPROVED
PUMP & CRADLE**



IMPROVED SPREADER BAR!

13010SV with Sling
(Sold Separately)

Hydraulic, Standard Patient Lift with Six Point Cradle

13010SV (Has replaced the 13010), 1/cs

FEATURES:

- 6 point cradle design.
- Safely raises or lowers individuals from any stationary position.
- Silver vein finish is attractive and durable.
- High performance hydraulics raises or lowers individuals gradually and safely.
- Easy to operate caster brakes provide additional safety.
- Adjustable width base.
- Includes sling chains.
- Limited Lifetime Warranty (frame).
- 1 Year Limited Warranty (pump).

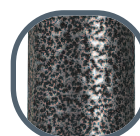
COMPARE TO:

drive

**Hoyer/
Joerns®**

13010SV

HML400



SILVER VEIN FINISH

EASY TO MAINTAIN

& LESS INSTITUTIONAL LOOKING!

COMPARE TO:

drive

**Hoyer/
Joerns®**

Brewer®

13023

C-HCA

9805

Hydraulic, Deluxe Chrome Plated

Patient Lift with Six Point Cradle

13023

(Has replaced the 13010), 1/cs

13023CSET

3" Casters (For use with Low Bed), Contains Two 3" Non-locking Caster and Two 3" Locking Caster, 4/bx

Low Hydraulic, Standard Patient Lift with Six Point Cradle (For use under Low Bed)

13023SVKIT

Includes 13023SV and (4) 3" Casters
(Two with locks, two without locks), 1set/cs

FEATURES:

- Chrome-plated steel construction provides maximum strength.
- 6 point cradle design.
- Safely raises or lowers individuals from any stationary position.
- High performance hydraulics raise or lower individuals gradually and safely.
- Easy to operate caster brakes provide additional security.
- Adjustable width base.
- Includes sling chains.
- Limited Lifetime Warranty (frame).
- 1 Year Limited Warranty (pump).

**CAN FIT
UNDER LOW
BED WITH 3"
CASTER KIT
(SOLD
SEPARATELY)**



**NEW & IMPROVED
PUMP**

13023
with Sling
(Sold Separately)

**REFER TO PAGE 198-206
FOR LIFT ACCESSORIES
AND SLINGS.**

SPECIFICATIONS

Item #	Boom Maximum Height	Boom Minimum Height	Base Width (open)	Base Width (closed)	Base Height	Casters	Product Weight	Carton Shipping Weight	Weight Limit
13010SV	67"	17"	43"	23"	5.5"	4"	76 lbs.	85 lbs.	400 lbs.
13023	62"	17.5"	42"	22.5"	6"	5"	72 lbs.	81 lbs.	450 lbs.

*(Not endorsed or authorized by Invacare® or Joerns®.)

Important Notice: Item numbers that display an asterisk () reflect an item that will be discontinued or package change.