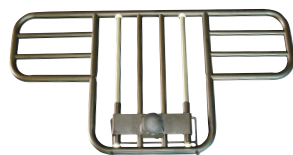


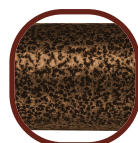
15001ABV



15201BV



15003



BROWN VEIN FINISH
EASY TO MAINTAIN &
LESS INSTITUTIONAL!

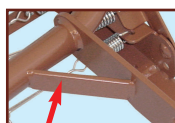
***BED PACKAGES NOW
AVAILABLE WITH
BROWN VEIN RAILS!**

New & Improved Multi-Height Manual Bed

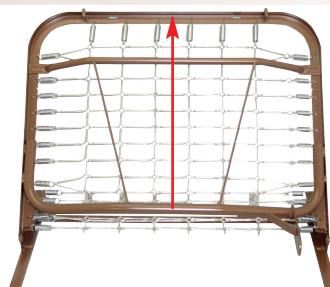
15003	Manual Bed, 1/cs (shown)
15003BV-FR	Manual Bed with Full Length Side Rails (item #15001A/15001ABV) (Has replaced 15003-FR)
15003BV-HR	Manual Bed with Half Rails (item #15002/15201BV) (Has replaced 15003-HR)
15003BV-PKG	Manual Bed with Full Length Side Rails (item #15001A/15001ABV) and 80" Inner Spring Mattress (item #15006) (Has replaced 15003-PKG)
15003BV-PKG-T	Manual Bed with Full Length Side Rails (item #15001A/15001ABV) and 80" Therapeutic Support Mattress (item #15019) (Has replaced 15003-PKG-T)
15003BV-PKG-1	Manual Bed with Half Rails (item #15002/15201BV) and 80" Inner Spring Mattress (item #15006) (Has replaced 15003-PKG-1)
15003BV-PKG-1-T	Manual Bed with Half Rails (item #15002/15201BV) and 80" Therapeutic Support Mattress (item #15019) (Has replaced 15003-PKG-1-T)
15003BV-PKG-2	Manual Bed with Full Length Side Rails (item #15001A/15001ABV) and 80" Foam Mattress (item #15007) (Has replaced 15003-PKG-2)



REINFORCED CONNECTOR
BRACKETS REDUCE SAG



EXTRA GUSSETS PROVIDE
ADDITIONAL STRENGTH



REINFORCED HEAD SECTION REDUCES
RISK OF TORQUING AND PROVIDES
ADDITIONAL SUPPORT.

FEATURES:

- Multi-height adjustable, by operating the hand cranks at the foot of the bed. Foot, head and overall bed height can be adjusted. Hand crank handles fold down to be concealed to prevent injury.
- Side clips under angle iron store shaft when bed is unassembled.
- Easy to set up.
- Bed ships in two cartons.
- Back and foot adjustment allow for an anatomically correct sleep surface.
- Channel frame construction provides superior strength and reduced weight.
- **Reinforced frame resists twisting and bending.**
- Zinc coated spring deck.
- Heavy duty, bed ends are attractive in any décor and easy to maintain.
- Head and foot ends are interchangeable with Invacare® and Sunrise®.
- CSA approved.
- Manufactured in ISO9001 facility.
- Warranty: (Original purchaser) Lifetime on welds, 5 years on frame, 1 year on all other parts and components.

SPECIFICATIONS

Item #	Bed Height (min)	Bed Height (max)	Overall Length	Overall Width	Product Weight	Carton Shipping Weight	Weight Limit
15003	16"	24.5"	88"	36"	165 lbs.	179 lbs.	450 lbs.

Important Notice: Item numbers that display an asterisk () reflect an item that will be discontinued or package change.

beds

drive
WWW.DRIVEMEDICAL.COM

To order call toll free: 877.224.0946