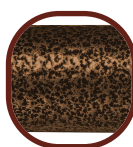


BROWN VEIN FINISH
EASY TO MAINTAIN &
LESS INSTITUTIONAL!



15005

*BED PACKAGES NOW
AVAILABLE WITH
BROWN VEIN RAILS!

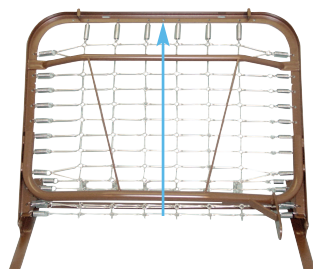
**BED
EXTENSION
KIT & BED
TRANSPORTER
AVAILABLE. SEE BED
ACCESSORIES
PAGE 343.**

New & Improved Full-Electric Bed

15005	Full Electric Bed, 1/cs
15005BV-FR	Full Electric Bed with Full Length Side Rails (item #15001A/15001ABV) (Has replaced 15005-FR)
15005BV-HR	Full Electric Bed with Half Rails (item #15002/15201BV) (Has replaced 15005-HR)
15005BV-PKG	Full Electric Bed with Full Length Side Rails (item #15001A/15001ABV) and 80" Inner Spring Mattress (item #15006) (Has replaced 15005-PKG)
15005BV-PKG-T	Full Electric Bed with Full Length Side Rails (item #15001A/15001ABV) and 80" Therapeutic Support Mattress (item #15019) (Has replaced 15005-PKG-T)
15005BV-PKG-1	Full Electric Bed with Half Rails (item #15002/15201BV) and 80" Inner Spring Mattress (item #15006) (Has replaced 15005-PKG-1)
15005BV-PKG-1-T	Full Electric Bed with Half Rails (item #15002/15201BV) and 80" Therapeutic Support Mattress (item #15019) (Has replaced 15005-PKG-1-T)
15005BV-PKG-2	Full Electric Bed with Full Length Side Rails (item #15001A/15001ABV) and 80" Foam Mattress (item #15007) (Has replaced 15005-PKG-2)

FEATURES:

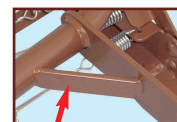
- Quiet, smooth operation.
- The easy-to-use hand pendant electrically controls the positioning of the upper body, knees, and overall height of the bed frame to provide maximum comfort and versatility for the patient or caregiver.
- Side clips under angle iron store shaft when bed is unassembled.
- Easy to set up.
- Bed ships in two cartons.
- Back and foot adjustment allow for an anatomically correct sleep surface.
- Channel frame construction provides superior strength and reduced weight.
- **Reinforced frame resists twisting and bending.**
- Zinc coated spring deck.
- Heavy duty, bed ends are attractive in any décor and easy to maintain.
- Head and foot ends are interchangeable with Invacare® and Sunrise®.
- UL 73 pending.
- CSA approved.
- Manufactured in ISO9001 facility.
- Warranty: (Original purchaser) Lifetime on welds, 5 years on frame, 1 year on all other parts and components.



**REINFORCED HEAD
SECTION REDUCES RISK OF
TORQUING AND PROVIDES
ADDITIONAL SUPPORT.**



**REINFORCED CONNECTOR
BRACKETS REDUCE SAG**



**EXTRA GUSSETS PROVIDE
ADDITIONAL STRENGTH**

SPECIFICATIONS

Item #	Bed Height (min)	Bed Height (max)	Overall Length	Overall Width	Product Weight	Carton Shipping Weight	Weight Limit
15005	16"	24.5"	88"	36"	195 lbs.	210 lbs.	450 lbs.

Important Notice: Item numbers that display an asterisk () reflect an item that will be discontinued or package change.

beds

drive
WWW.DRIVEMEDICAL.COM

To order call toll free: 877.224.0946