

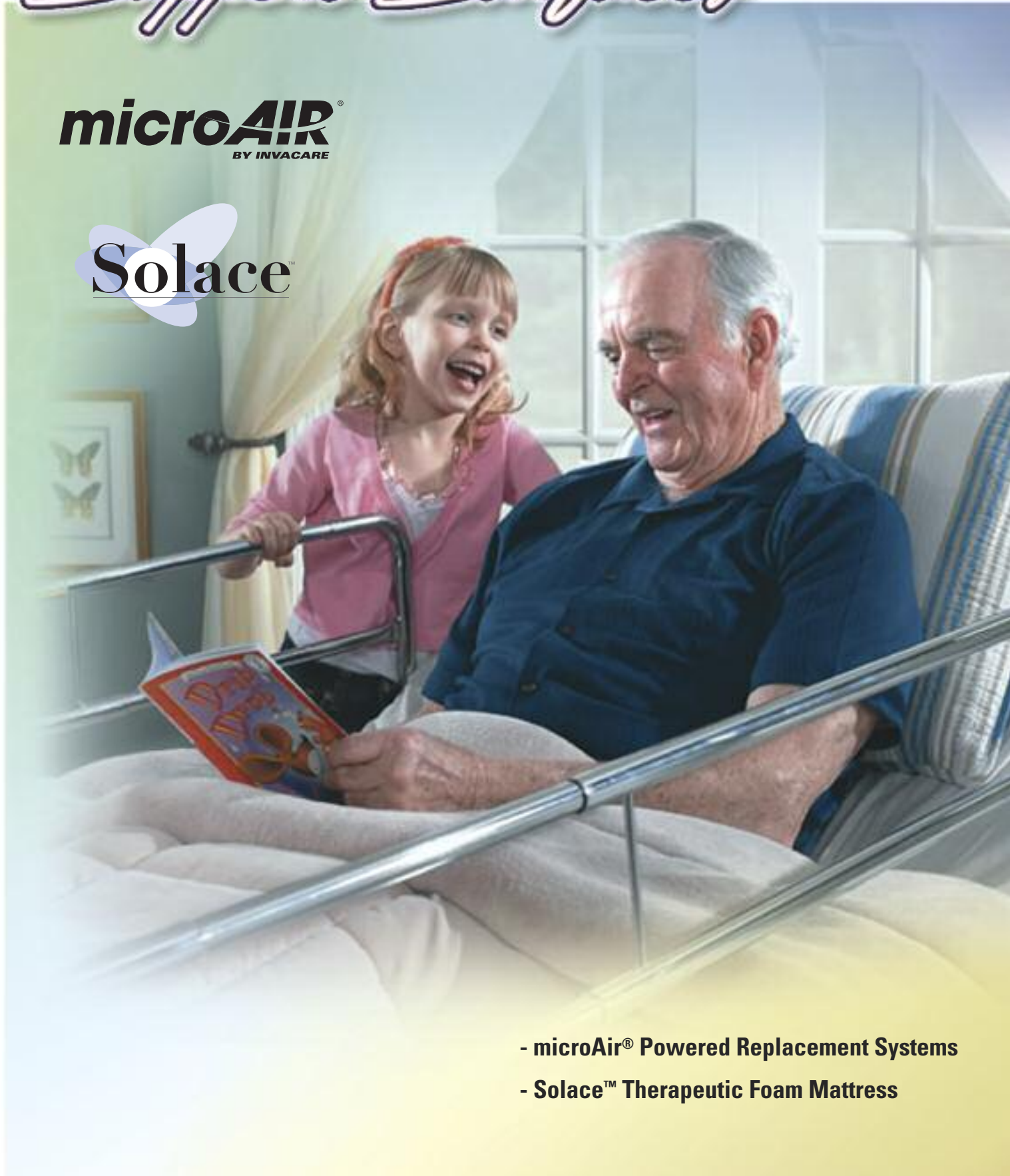


Yes, you can.®

Therapeutic Support Surfaces

microAIR®
BY INVACARE

Solace™



- microAir® Powered Replacement Systems
- Solace™ Therapeutic Foam Mattress

Table of Contents

Understanding Pressure Ulcers.....	3-4
The microAir Difference	5-7
MA50, MA51, MA55.....	8-9
MA60, MA65 Alternating Pressure	10-11
MA80, MA85 True Low Air Loss	12-13
MA90Z, MA95Z Lateral Rotation	14-15
Solace Foam Mattress Therapeutic Support Surfaces	16-20
Group I and Group II Therapeutic Support Surfaces Chart	21-23

Invacare has a complete line of easy to understand and use microAIR® and Solace™ therapeutic support surfaces. The innovative designs help in the prevention and treatment of pressure ulcers.



Joining the Effort in Pressure Ulcer Prevention

There is a national focus on pressure ulcer prevention. In fact, the goal of the Institute for Healthcare Improvement is to reduce incidence by December 2008 and focus on "getting to zero."

The goal of the government's Healthy People 2010 Initiative is to cut the incidence of pressure ulcers in nursing home residents 50% by 2010.

The statistics are worth noting: There are 1.8 million new pressure ulcer cases each year, with 70% of those occurring in persons age 70 or older at an overall treatment cost of \$1.3 billion. 24% of skilled nursing residents develop pressure ulcers at some time. That number increases to 60% in individuals with hip fractures.

More than 17,000 lawsuits linked to pressure ulcers are filed annually.

The focus on more effective prevention and quicker healing is driven, and even mandated, by many government and medical associations.

But age, obesity, diabetes and other illnesses can all lead to pressure ulcers...and Americans are increasing in age, weight, and diabetes occurrences. The goal of pressure ulcer reduction sounds like an impossible feat.

Six key interventions aimed at reducing pressure ulcer incidence are:

1. Assess pressure ulcer risk upon admission for all patients in all care environments: acute care, long term care and home care
2. Reassess risk daily through skin inspection
3. Manage moisture by keeping the patient dry
4. Optimize nutrition
5. Minimize pressure through use of pressure-relieving surfaces
6. Turning every 2 hours

Now, Invacare has joined the effort with a full range of comfort solutions designed to prevent and remediate pressure ulcers.

The microAIR and Solace innovative technology solutions offer the patient increased relief and comfort while providing the caregiver a product that is easy to setup, use and maintain.

It's what you'd expect from the number one provider of medical equipment in the world – Invacare.

This information is not medical advice. Each individual should always consult with his/her physician.

Understanding Pressure Ulcers

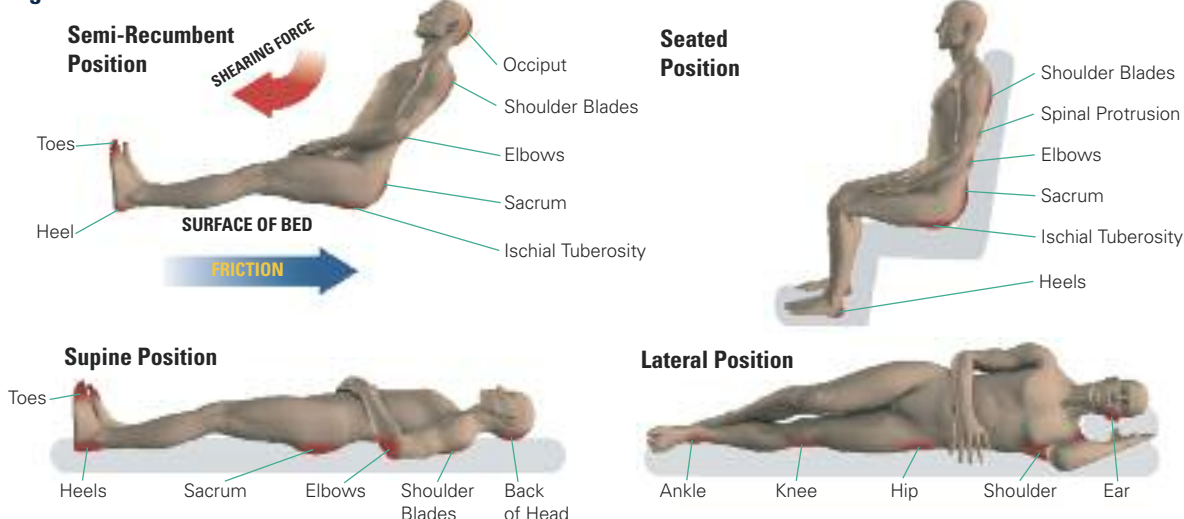
What are pressure ulcers?

Pressure ulcers, sometimes called bed sores or decubitus (lying in bed) ulcers, are typically located in the areas where the body has less protective covering on weight bearing points. Those areas are typically heels, elbows, shoulders, and the sacral regions in the supine, semi-recumbent, and seated positions. Ankles, knees, hips and ears are additional areas of concern in the lateral position. (See Fig. A) When blood pressure inside

the dermis is blocked or above 32mm/Hg, capillaries begin to close. (See Fig. B)

Without the nutrients in the blood and the removal of waste products the area begins to break down. The first sign is redness and warmth to the touch. In severe stages, extensive tissue destruction can lead to tissue necrosis (death), and damage to supporting muscle and bone.

Fig. A



When is a patient at risk?

Patient risk is assessed on a number of factors standardized in assessments such as the Norton or Braden scales. It is recommended that patients be assessed as soon as possible upon entering into care.

This information is not medical advice. Each individual should always consult with his/her physician to determine proper product selection.

What are the risk factors?

1. Patient is immobile or inactive

The lack of movement results in loss of blood flow to the skin.

2. Body size and shape

Very thin or very obese patients are at a higher risk. Very thin people lack cushioning between the skin and bony prominences such as heels and elbows. The overweight have fewer blood vessels to the skin and require body movement to get the blood flow to the susceptible areas.

3. Skin condition and hygiene regimens

Thinning skin, which naturally occurs with age as well as some medications, may make the patient more susceptible.

4. Nutrition

A balanced diet and proper calorie consumption is important in maintaining skin thickness and elasticity.

5. Incontinence and Infection

Urine and fecal matter or increases in body temperature and subsequent perspiration can cause maceration (the skin to soften). The skin is therefore more susceptible to tearing.

6. Circulation

Edema or swelling due to poor blood circulation makes the susceptible areas less resistant to pressure.

How do pressure ulcers form?

Any individual or combination of the above factors combined with environmental skin factors below can result in a pressure ulcer. If the outer layer of skin (epidermis) is rubbed away the more vulnerable dermis layer is exposed to bacteria and infection.

1. Pressure

When the capillary blood pressure is cut off from the skin by pressure on the area for an extended time.

2. Moisture

Over-hydrated (macerated) skin is at higher risk of tearing or breaking down from moving or friction.

3. Shear

Capillaries stretch and tear reducing the blood flow when the skin remains stationary against the bed linens as the skeletal structure moves with the surface.

4. Friction

When the skin is pulled across a coarse surface and the outer protective layer (epidermis) is rubbed away.

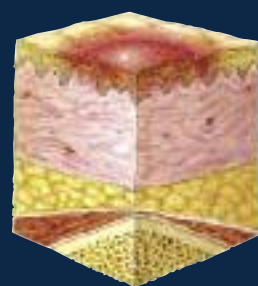
Fig. B

Pre Stage I

Suspected Deep Tissue Injury – Localized area of discolored (purple or maroon) intact skin or blood-filled blister due to damage of underlying soft tissue from pressure and/or shear. The tissue may be painful, firm, mushy, warmer or cooler compared to adjacent tissue.

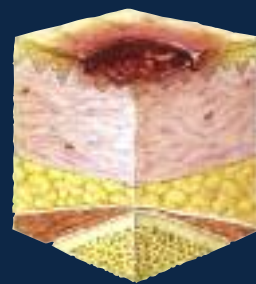
I Stage

Non-blanchable erythema of intact skin. (Skin that does not turn white when depressed)



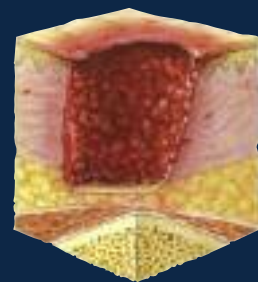
II Stage

Partial thickness skin loss involving epidermis, dermis or both.



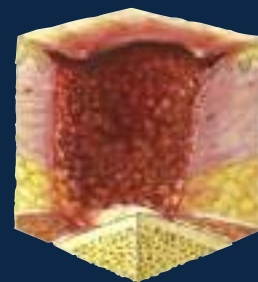
III Stage

Full thickness skin loss involving damage or necrosis of subcutaneous tissue that may extend down to, but not through, underlying fascia.



IV Stage

Full thickness skin loss with extensive destruction, tissue necrosis, or damage to muscle, bone, or supporting structures.



MEDICARE CRITERIA*

Support surfaces may be static (non-powered, reactive) or dynamic (moveable active surface). A static surface is recommended if a patient can assume varying positions without bearing weight on a pressure ulcer, generally a Group I surface. Dynamic surfaces (usually Group II) are required if the patient cannot change positions without bearing weight on the pressure ulcer OR if the patient fully compresses the static support surface.**

Group II Treatment

Group II surfaces may be covered if the patient meets the following criteria:

1. Multiple stage II pressure ulcers located on the trunk or pelvis.

AND

2. Patient has been on a comprehensive ulcer treatment program*** for at least the past month which has included the use of a Group I support surface, and ulcers have worsened or remained the same over the past month.

OR

3. Large or multiple stage III or IV pressure ulcer(s) on the trunk or pelvis.

OR

4. Recent myocutaneous flap or skin graft for a pressure ulcer on the trunk or pelvis (surgery within the past 60 days).

AND

5. The patient has been on a Group II or III support surface immediately prior to a recent discharge from a hospital or nursing facility (discharge within the past 30 days).

* Medicare Criteria: This information is not intended to be, nor should it be considered, billing or legal advice. Providers are responsible for determining the appropriate billing codes when submitting claims to the Medicare program, and should consult an attorney or other advisor to discuss specific situations in further detail.

** This information is not medical advice. Each individual should always consult with his/her physician to determine proper product selection.

*** Documented comprehensive care plan/treatment program should generally include: education for patient and caregiver on prevention/management of pressure ulcers; regular assessment by a licensed practitioner (weekly if stage 3 or 4, monthly if stage 1 or 2); turning and positioning schedule; appropriate wound care (stage 3 or 4); appropriate management of moisture/incontinence; nutritional assessment and intervention.

The microAIR® Difference: Security in Design

Patient Safety and Caregiver Confidence

Constant Pressure Monitoring

The dial allows you to set the appropriate pressure using patient weight. Once set, the computer technology inside monitors the pressure. The solenoid valves open and close to regulate the air inside the mattress and maintain the pressure at or below 32mm/Hg to avoid capillary occlusion. On compressor models (MA50, MA51, MA55, MA60, MA65, and MA90Z), the compressor will turn off in maintenance mode for a quieter, energy saving environment.

On Demand Low Air Loss

microAIR compressor models (MA55, MA65, MA90Z) all include the on-demand low air loss feature. When activated at the push of the button, air is released inside the mattress to keep the mattress environment cooler for the patient as well as help with moisture management. When not in use, the compressor will go into quiet energy saving mode for an improved sleep environment.

Wireless Auto Fowler

All microAIR models MA60, MA65, MA80, MA85, MA90Z, MA95Z (with the exception of the MA50, MA51, and MA55) include this feature. A transmitter in the head section of the bed sends a signal to the power unit when that section is raised to add 25% more air into the center section of the bed preventing the patient from bottoming out. A caregiver no longer needs to push the fowler button, and the patient can raise the bed without calling for assistance.

Ease of Set Up and Connection

Unroll the mattress and hook the power unit to the end of the bed.

With the snap of the mattress hose onto the plugged-in power unit, the mattress is ready to inflate.

Always read the product owner's manual before use.

Convenient snap on connections for compressor models MA60, MA65 and MA90Z.



Always connects correctly.



Secure magnetic connector on blower models MA85 and MA95Z



Power Outage Safety

Compressor models (MA50, MA51, MA55, MA60, MA65 and MA90Z), in the event of a power outage, remain inflated as long as the mattress air hose remains connected to the compressor. Once the power is returned, the memory inside the compressor returns to the programmed settings.

Blower models (MA80, MA85 and MA95Z) also return to the pre-power outage settings once the power returns. The safety mat inside the mattress prevents the patient from bottoming out.

Additional Safety Features

All microAIR therapeutic support systems include additional safety features: 2" safety foam mat (except the MA50 alternating pressure mattress overlay), Low Pressure and Power Outage audio and visual alarms, Lock Out button to avoid accidental adjustments, and are 16 CFR 1632 and 16 CFR 1633 compliant with federal fire regulation standards by including a sewn in fire sock on each model.

Ease of Transport

Removal of the mattress is simplified by rolling it up beginning at the head section, and putting the power unit inside the mattress for protection. Once rolled, the two over-the-shoulder attached carrying handles allow for easy transport.



Invacare® microAIR® Alternating Pressure Therapeutic Support Mattress Replacement System

Model nos. MA50, MA51 and MA55

Invacare® Therapeutic Support Surfaces



Invacare® microAIR® 50 Alternating Pressure Overlay

Model no. MA50

The microAIR MA50 is a full featured alternating pressure overlay powered by a 10 LPM compressor with four alternating pressure cycles of 5, 10, 15 and 20 minutes.

Specifications

Electrical Power: 90V, 60Hz, 1A

Dimensions:

Mattress: 6" x 36" x 80"

Power Unit: 9.5" x 5" x 5" 10 LPM

Power Cord: 14 ft.

Weight Capacity: 350 lb.

Safety Code: 16 CFR 1632, 16 CFR 1633 compliant

Materials:

Mattress Cover: Dual-layer, quilted, anti-microbial, resistant vapor permeable cover protects internal air cells.

Bottom cover is 600 denier nylon

Air cells: 70 denier urethane coated nylon

Limited Warranty:

Mattress: 1 year

Power Unit: 2 years



User Friendly Control Units

- Up and Down arrows with LED display allow adjustment for patient comfort and pressure relief
- Choice of alternating pressure or static therapy
- Digital display of pressure setting
- Max Inflate
- Lock Out button
- Alternating Pressure Button with 4 time settings
- Visible Audible Power warning signal
- Lightweight and easy to use power unit with holder attaches easily to bed ends
- No air filter to clean
- Manual Fowler

Invacare® microAIR® Alternating Pressure Therapeutic Support Mattress Replacement System

Model nos. MA51 and MA55

This Invacare alternating pressure mattress reduces interface pressure to aid in the prevention and the treatment of Stage I to Stage IV pressure ulcers.

For the safety and comfort of the patient and caregiver, the microAIR state of the art 10 LPM compressor continually monitors the air pressure in the mattress to maintain the appropriate pressure (generally below 32 mm/Hg). A solenoid valve system opens and closes to maintain air pressure indefinitely in case of a power outage, or release air to maintain the appropriate surface pressure for the patient.

Four alternating pressure cycles are available at 5, 10, 15 and 20 minutes to eliminate the pressure against the ulcer and to promote blood circulation to the entire body. Unique dual quilted cover guards against friction and shear and are fluid resistant and vapor permeable.

MA55 Alternating Pressure with On-Demand Low Air Loss and 10 LPM Compressor

In addition to all of the features of the MA51 alternating pressure mattress, the MA55 model improves air circulation and cools the body temperature with a unique system of air released into the mattress.

Features of Alternating Pressure and Compressor Models

- Efficient real time monitoring for correct pressure relief
- Energy saving compressor turns off when not needed during pressure maintenance periods
- Efficient solenoid air valves open and close as required to maintain proper interface pressures
- Power outage safety with mattress hose connected to the compressor
- Ninety degree, quick hose connector simplifies set up with one motion
- Two-inch safety foam as added safety measure
- Quick connect air cells make for easy replacement if needed
- CPR release built into mattress
- Attached carrying straps for easy transportation
- Power outage recovery – compressor returns to originally set pressure relief setting
- Buckle straps to secure mattress to bed deck

Specifications

Electrical Power: 90V, 60Hz, 1A

Dimensions:

Mattress: 8" x 36" x 80"

Power Unit: 9.5" x 5" x 5" 10 LPM

Power Cord: 14 ft.

Weight Capacity: 350 lb.

Safety Code: 16 CFR 1632, 16 CFR 1633 compliant

Materials:

Mattress Cover: Dual-layer, quilted, anti-microbial, fluid-resistant, vapor permeable cover protects internal air cells.

Bottom cover is 600 denier nylon

Air cells: 70 denier urethane coated nylon

Limited Warranty:

Mattress: 1 year

Power Unit: 2 years

MA50 / MA51



MA55



Invacare® microAIR® Alternating Pressure Therapeutic Support Mattress Replacement System

Model nos. MA60 and MA65

This Invacare larger alternating pressure mattress reduces interface pressure to aid in the prevention and the treatment of Stage I to Stage IV pressure ulcers with a state of the art 50 LPM compressor that inflates the mattress within 5-10 minutes and provides faster, more efficient and complete therapy cycles.

For the safety and comfort of the patient and caregiver, the 50 LPM compressor continually monitors the air pressure in the mattress to maintain the appropriate pressure at or below 32 mm/Hg. As long as the hose remains connected from the mattress to the power unit, air will remain in the mattress to prevent bottoming out in a power outage. The solenoid valve system opens and closes to regulate the air level in the mattress and maintain the appropriate surface pressure for the patient.

Four alternating pressure cycles are available at 5, 10, 15, and 20 minutes to eliminate the pressure against the ulcer and to promote blood circulation to the entire body. Unique dual quilted covers guard against friction and shear and are water resistant and vapor permeable.



Distinctive Features of Alternating Pressure 50 LPM Compressor Models

- Deeper 10" mattress than the MA50 series
- 50 LPM compressor inflates mattress quickly
- Manual Fowler to prevent accidental bottoming out
- Efficient real time monitoring for correct pressure relief
- Energy saving compressor turns "off" when not needed during pressure maintenance periods
- Efficient solenoid air valves open and close as required to maintain proper interface pressures
- Power outage safety with mattress hose connected to the compressor
- Ninety degree, quick hose connector simplifies set up with one motion
- Two-inch safety foam as added safety measure
- Quick connect air cells make for easy replacement if needed
- CPR release built into mattress
- Built in carrying straps for easy transportation
- Power outage recovery – compressor returns to originally set pressure relief setting
- Buckle straps to secure mattress to bed deck

Alternating Pressure with On-Demand Low Air Loss and 50 LPM Compressor

Model no. MA65

In addition to all of the features of the MA60 alternating pressure mattress, the MA65 model improves air circulation and cools the body temperature with a unique system of air released into the mattress.

Specifications

Electrical Power: 90V, 60Hz, 1A

Dimensions:

Mattress: 10" x 36" x 80"

Power Unit: 15" x 16" x 11", 50 LPM

Power Cord: 14 ft.

Weight Capacity: 350 lb.

Safety Code: 16 CFR 1632, 16 CFR 1633 compliant

Materials:

Mattress Cover: Dual-layer, quilted, anti-microbial, fluid-resistant vapor permeable cover protects internal air cells.

Bottom cover is 1000 denier nylon

Air cells: 70 denier urethane coated nylon

Limited Warranty:

Mattress: 1 year

Power Unit: 2 years



User Friendly Control Units

- Up and Down arrows with LED display allow adjustment for patient comfort and pressure relief
- Digital display of pressure setting Max Inflate/ Low Air Loss button
- Lock Out button
- Alternating Pressure button with four time settings
- Visible and/or audible power warning signal
- Lightweight and easy to use power unit with holder for bed ends
- Wireless Automatic Fowler
- No air filter to clean



Invacare® microAIR® True Low Air Loss Therapeutic Support Mattress Replacement

Model nos. MA80 and MA85

This Invacare True Low Air Loss mattress helps manage skin moisture to avoid maceration and maintain a dryer environment for pressure ulcer healing in the treatment of Stage I to Stage IV pressure ulcers. The mattress and blower system automatically maintains five different pressure zones for softer head and heel sections and firmer torso pressure interfaces.

For the safety and comfort of the patient and caregiver, the microAIR state of the art controller technology monitors the blower speed to maintain the appropriate surface pressure after the interface pressure is set. Unique dual quilted covers guard against friction and shear. Pulse settings are available on MA80 unit.

MA85 True Low Air Loss with Alternating Pressure and 1275 LPM Blower

Building on the True Low Air Loss model benefits of improved air circulation, body temperature cooling, and skin moisture management, this microAIR model increases the therapy with the addition of alternating pressure to reduce surface interface and offer pressure relief. Alternating pressure settings of 5, 10, 15, and 20 minutes are available on the MA85.

Features

- Efficient real time monitoring for correct pressure relief
- Two-inch safety foam
- Wireless auto fowler automatically adds 25% more air to prevent bottoming out when bed is articulated
- Static setting button
- Ninety degree, magnetic hose connector simplifies set up and acts as CPR release
- Quick connect air cells for easy replacement as needed
- Built in carrying straps for easy transportation
- Inflates in seconds
- Settings retained during a power outage and will resume once power is returned
- Buckle straps to secure mattress to bed deck



User Friendly Blower Units

- MA85 version - AP time button with four settings
- MA80 version - Pulse setting
- Visible and audible warning signal button
- Up and Down arrows with LED display allow adjustment for patient comfort and pressure relief
- Digital display of pressure setting
- Max Inflate
- Lock Out button
- Lightweight power unit attaches easily to bed ends
- Wireless Automatic Fowler
- Easy-to clean air filter



Sewn in Fire Sock.



Quilted Cover.



**MA85 True Low Air Loss
with Alternating Pressure**

Specifications

Electrical Power: 90V, 60Hz, 1A

Dimensions:

Mattress: 10" x 36" x 80"

Power Unit: 14.5" x 11" x 6", 1275 LPM

Power Cord: 14 ft.

Weight Capacity: 350 lb.

Safety Code: 16 CFR 1632, 16 CFR 1633 compliant

Materials:

Mattress Cover: Dual-layer, quilted, anti-microbial, fluid-proof
vapor permeable cover covers internal air cells

Bottom cover is 1000 denier nylon

Air cells: 70 denier urethane coated nylon

Limited Warranty:

Mattress: 1 year

Power Unit: 2 years

Lateral Rotation Therapeutic Support Mattress Replacement Systems Model nos. MA90Z and MA95Z

These Invacare microAIR lateral rotation mattresses provide pressure relief and moisture maintenance for patients who need to be turned for pressure relief or other health indications. Inherent in the design of the patented z-cell air cell design is alternating pressure as the mattress turns. As with the other microAIR mattresses, these therapeutic systems offer relief for pressure ulcers from Stages I through IV.

For the safety and comfort of the patient and caregiver, the microAIR state of the art controller technology monitors the blower and compressor speeds to maintain the appropriate surface pressure once it has been set. Constant air pressure side bolsters help contain patient on the mattress. Both models have four-way-stretch urethane quilted covers to guard against friction and shear.

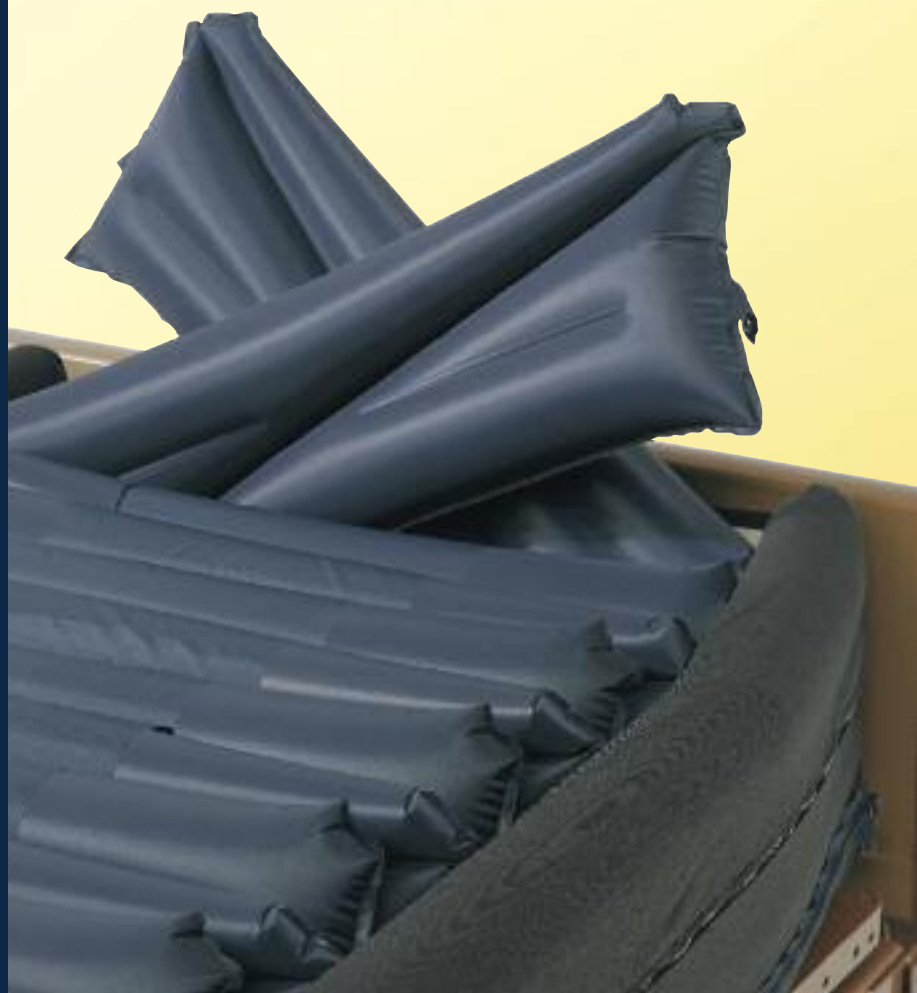
Another protective measure of these microAIR therapeutic systems for patient safety is that they recenter the patient between rotations. Also the lateral rotation mode will be automatically stopped with a bed in the fowler or upright mode.

The MA90Z Lateral Rotation with Alternating Pressure and On Demand Low Air Loss with 50 LPM Compressor

The turn is offered to angles up to 30 degrees for pulmonary therapy requirements with options for ¼, ½, ¾ turns. Turn times available are 10, 20, 30 and 60 minutes with options to turn right or left only as well as both sides.

User Friendly Power Units

- MA90Z - Energy saving compressor turns off to maintain pressure setting
- MA95Z - Large LCD display with pulse, static, upright/fowler and allows for angle and pressure adjustment
- Up and Down arrows allow adjustment for patient comfort and pressure relief
- Max Inflate with 30 minute safety feature
- Lock Out Button
- Static setting
- Visible and audible warning signal button
- Lightweight, power unit attaches easily to bed ends
- Easy to clean air filter



The MA95Z Lateral Rotation with Alternating Pressure and True Low Air Loss with 1275 LPM Blower

This model allows for customization of patient therapy settings including 45 degrees of turn, time and pressure. Alternating, static, and pulse therapies are available in addition to the lateral rotation and continuous true low air loss relief.

Features

- MA90Z - Efficient solenoid air valves that open and close as required to maintain proper interface pressures
- MA90Z - Power outage safety with mattress hose connected to the compressor
- MA95Z - Ninety degree, magnetic hose connector simplifies set up and provides quick CPR deflate
- Efficient real time monitoring for correct pressure relief
- Wireless auto fowler automatically adds 25% more air to prevent bottoming out when bed is articulated
- Two-inch safety foam as added safety measure
- Quick connect air cells
- CPR release
- Built in carrying straps for easy transportation
- Inflates quickly
- Settings retained during a power outage and will resume once power is returned
- Buckle straps to secure mattress to bed deck

Specifications

Electrical Power: 90V, 60Hz, 1A

Dimensions:

Mattress: 10" x 42" x 80"

Power Unit: 14.5" x 11" x 6"

Power Cord: 14 ft.

Weight Capacity: 350 lb.

Safety Code: 16 CFR 1632, 16 CFR 1633 compliant

Materials:

Mattress Cover: Urethane four way stretch quilted navy cover is antimicrobial, fluid-proof vapor permeable.

Bottom cover is 1000 denier nylon

Air cells: 70 denier urethane coated nylon

Limited Warranty:

Mattress: 1 year

Power Unit: 2 years

MA90Z Lateral Rotation with Alternating Pressure and On-Demand Low Air Loss

MA95Z Lateral Rotation with Alternating Pressure and True Low Air Loss

Overlays and Foam Mattresses

Simple to use and easy to maintain, these products include an alternating pressure pad system, gel overlay and a foam mattress replacement.

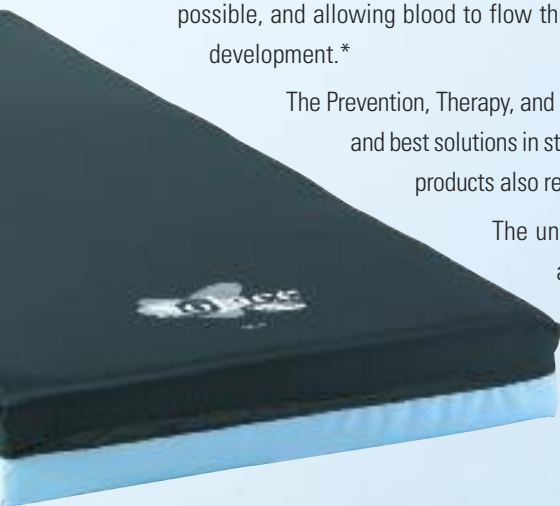


Solace™ Therapeutic Foam Mattresses

Solace mattresses are unique dual- and tri-layered foam formulations. They are designed to prevent and relieve pressure ulcers by distributing weight as uniformly as possible, and allowing blood to flow through the capillaries in areas prone to lesion development.*

The Prevention, Therapy, and Resolution mattress systems offer good, better and best solutions in static support surfaces. Within each category, the products also reflect increasing treatment efficacy.

The unique and patented designs combine comfort and technology for patient and caregiver confidence. The mattresses are available in standard 80" lengths with the ability to special order 76" and 84" lengths.



* Many support surfaces have been shown to improve pressure ulcers, however there is no compelling evidence that one performs better than all others in all circumstances. It is best to consider the therapeutic benefits of the products when determining which to use.

MEDICARE CRITERIA*

Support surfaces may be static (non-powered, reactive) or dynamic (moveable, active). A static surface is recommended if a patient can assume varying positions without bearing weight on a pressure ulcer. Dynamic surfaces are required if the patient cannot change positions without bearing weight on the pressure ulcer OR if the patient fully compresses the static support surface.

Group I Treatment

Group I surfaces may be covered if the patient meets the following criteria:

1. Completely immobile (patient cannot move around without assistance).

OR

2. Limited mobility (patient cannot make changes in body positions significant enough to alleviate pressure) PLUS one of Number 4-7.

OR

3. Any stage pressure ulcer on the trunk or pelvis PLUS one of Numbers 4-7

OR

4. Impaired nutritional status.

5. Fecal or urinary incontinence.

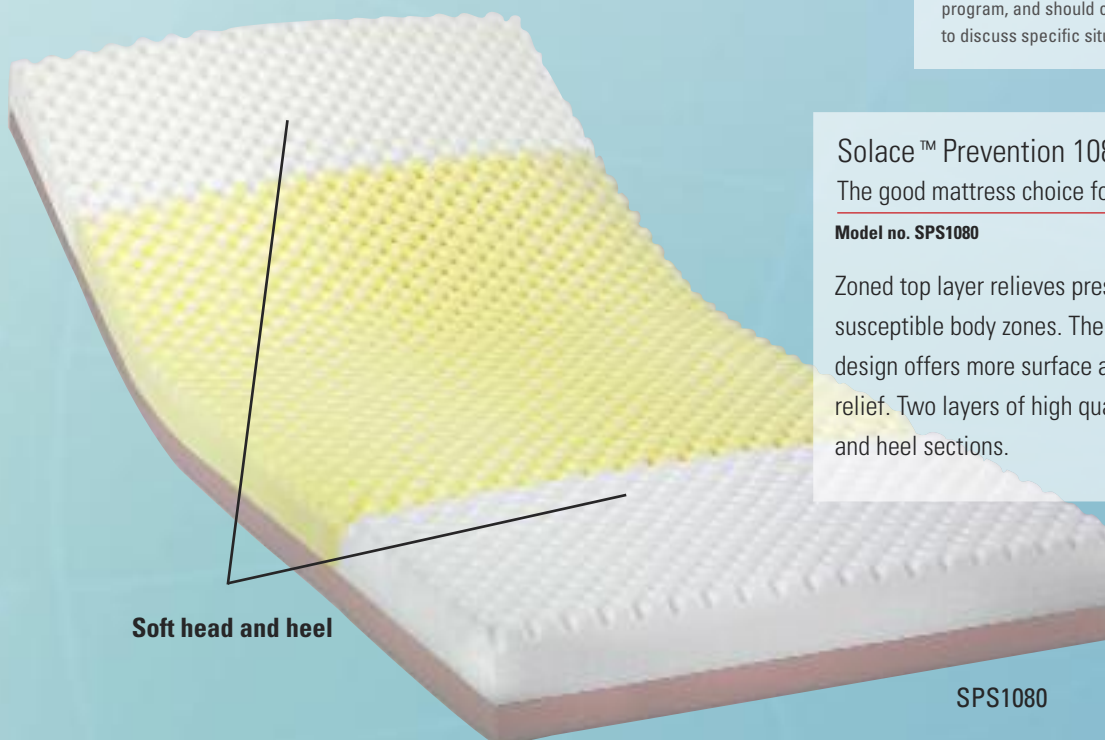
6. Altered sensory perception.

7. Compromised circulatory status.

* Medicare Criteria: This information is not intended to be, nor should it be considered, billing or legal advice. Providers are responsible for determining the appropriate billing codes when submitting claims to the Medicare program, and should consult an attorney or other advisor to discuss specific situations in further detail.

Solace™ Prevention Series for low risk patients

Cost effective, dual-layer design lowers interface pressure for the low risk patient.



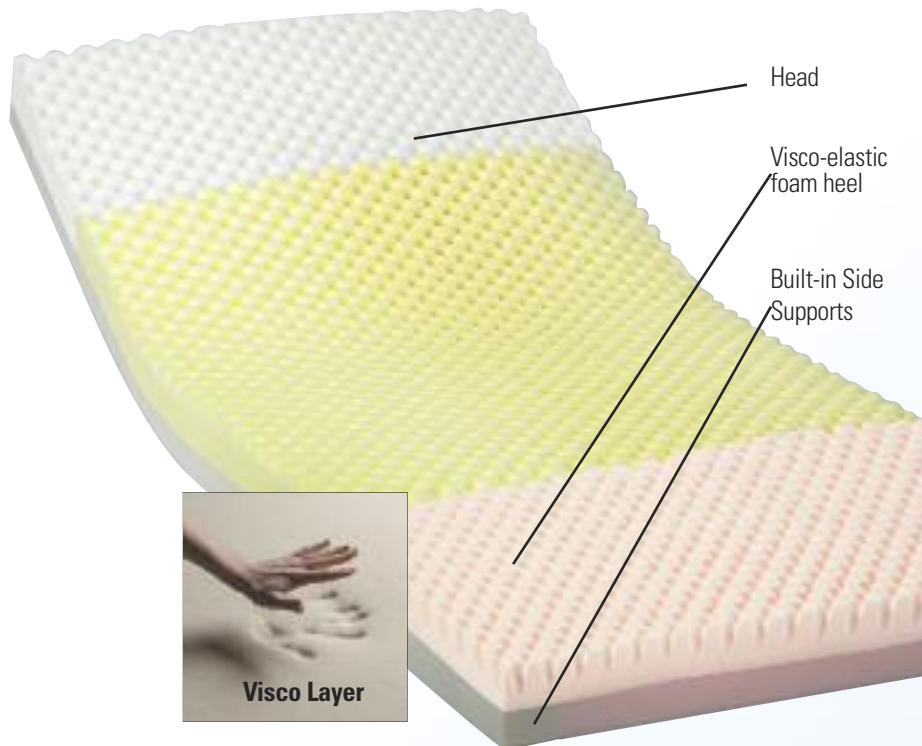
Solace™ Prevention 1080 –

The good mattress choice for low risk patients

Model no. SPS1080

Zoned top layer relieves pressure in the important susceptible body zones. The convoluted "fortress" cut design offers more surface area for patient support and relief. Two layers of high quality foam include softer head and heel sections.

Solace™ Prevention Series for low risk patients



Solace™ Prevention 2080 –

The better mattress choice

Model no. SPS2080

Added to the design are built-in side supports. The head and heel-soft sections add comfort and protection, while the side-supports provide stability and durability.

Solace™ Prevention 3080 –

The best solution for low risk patients

Model no. SPS3080

The soft heel section is upgraded to visco foam to cradle the sensitive area. This product provides comfort and support with built-in side supports and dual layer, “fortress” cut foam.

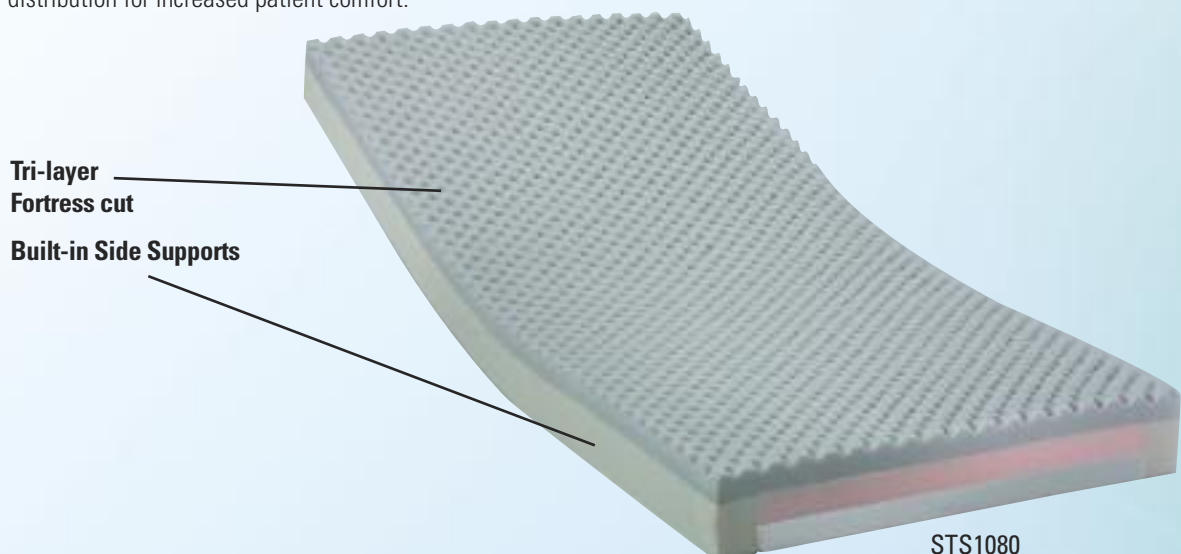
Solace™ Therapy Series for medium to high risk patients

Solace™ Therapy 1080 –

The good mattress choice for medium to high risk patients

Model no. STS1080

Precision three layered, mattress of die-cut foams provides pressure relief around bones, increases air flow to reduce surrounding temperature, and provides uniform weight distribution for increased patient comfort.

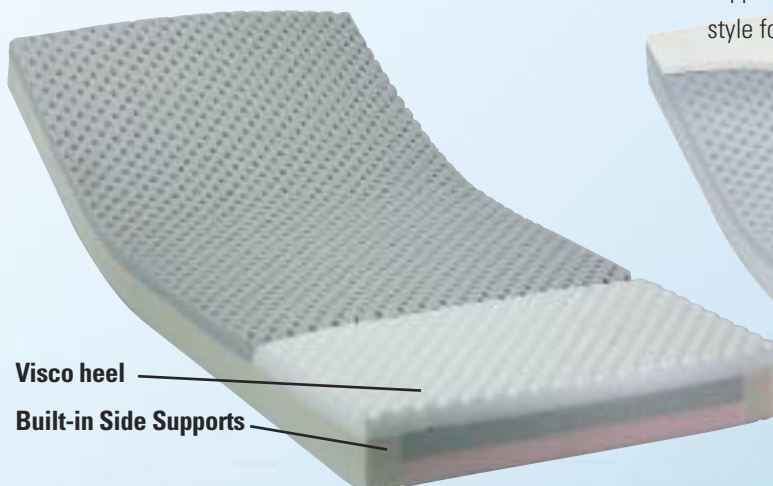


Solace™ Therapy 2080 –

The better mattress choice for medium to high risk patients

Model no. STS2080

Added to the design are built-in side supports and a Visco heel section to add comfort and protection.

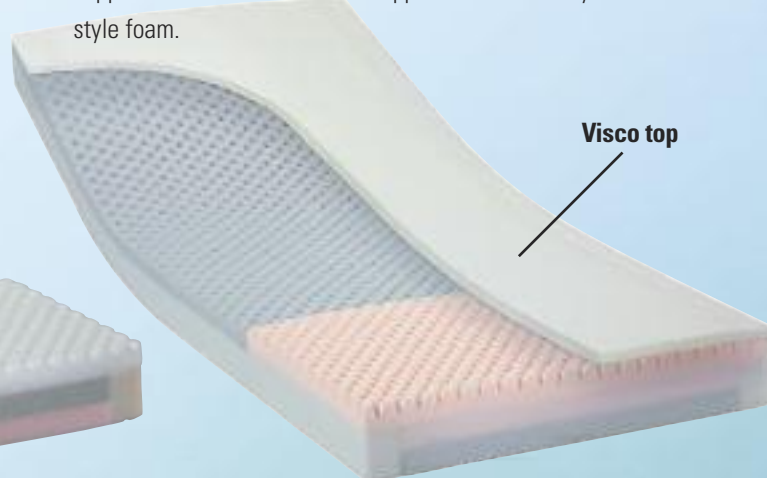


Solace™ Therapy 3080 –

The best mattress solution for medium to high risk patients

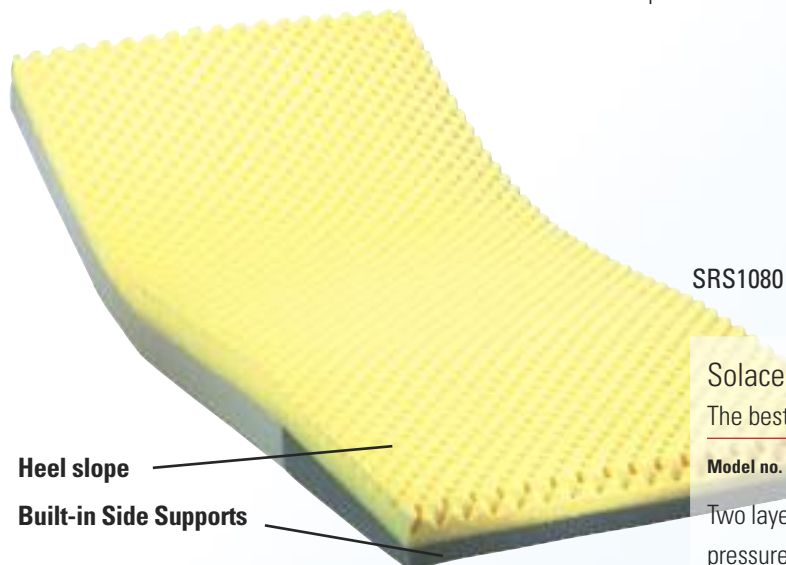
Model no. STS3080

Building more into the therapy mattress is a specially designed visco top to cradle the entire body in foam. This series provides comfort and support and includes the side supports and three layers of "fortress" cut style foam.



Solace™ Resolution Series — for pressure ulcer treatment

The Resolution series is the best Invacare® foam mattress solution for pressure redistribution.



SRS1080

Solace™ Resolution 1080 Series —

The best mattress solution for high risk patients

Model no. SRS1080

Two layers of highest protection foam with a heel slope to alleviate pressure. The convoluted "fortress" cut design offers more surface area for patient support and relief.



Egress EZ® Mattress

Model no. MATTEZCA, MATTEZLTCA

The Egress EZ mattresses are unique designs that give patients added support and independence when getting in or out of bed. The dual-layer and tri-layer foam have an exclusive built-in frame and 3" raised bolsters with cut-through handles that provide a place for patients to get leverage when standing. The egress area is 20" wide. Egress EZ products include the added relief of a heel soft area. Higher density three layer foam available in the MATTEZLTCA version.



Invacare® Gel Overlay Mattress

Model no. IVCGFM02

Standard gel overlays often suffer from the same problem — gel migration, the process of squeezing the gel out from under pressure points thereby reducing the effectiveness of the overlay. Invacare's new gel overlay addresses this concern through a specially-designed set of bladders that runs across the surface and minimizes the migration of the gel. Each cell works independently to provide support and minimize pressure points. Encased in a highly resilient foam base, the comfort of this gel overlay is unsurpassed.

Invacare® CareGuard™ Alternating Pressure Pad System

Model no. CG9701

Invacare CareGuard APP system has mattress flaps to secure the product. The advanced technology pump inflates and deflates the air cells for patient relief. Variable pressure settings provide patient comfort.



Group I Therapeutic Support Surfaces

	Gel Overlay	Alternating Pressure	Non-Powered			
Model Name	Invacare® Gel Foam Mattress Overlay	CareGuard™ Alternating Pressure Pad System	Invacare® Egress EZ™ Mattress	Solace™ Prevention Dual Layer Foam Mattresses	Solace™ Therapy Tri-Layer Foam Mattresses	Solace™ Resolution Mattresses
Model Number	IVCGFM02	CG9701	MATTEZCA, MATTEZLTCA	SPS1080 SPS2080 SPS3080	STS1080 STS2080 STS3080	SRS1080
HCPCS Code	E0185 (IN)	E0181 (CR)	E0184 (IN)	E0184 (IN)	E0184 (IN)	E0184 (IN)
Patient Risk Level	Low	Low	Medium-High	Low	Med-High	High-Risk & Therapy
Reimbursement Range*	\$271.88 - \$338.33	\$18.47 - \$31.72	\$105.34-\$194.70	\$105.34-\$194.70	\$105.34-\$194.70	\$105.34-\$194.70
Type of Therapy						
General Pressure Reduction	■	■	■	■	■	■
Alternating Pressure		■				
Features						
Built-in Side Supports	■		3" Hard side supports with hand holds	SPS2080 SPS3080	■	■
Comfort Settings/ Therapy Time Settings (min)		Adjustable				
Cover	70 Denier nylon top 9 oz. tri-laminate vinyl bottom waterproof, vapor permeable	Latex free vinyl	70 Denier nylon top 11 oz. tri-laminate vinyl bottom waterproof, vapor permeable			
Quick CPR Release	■	■				
Fortress Cut Convolute Foam			■	■	■	■
Mattress Construction	Gel	Pads	Foam	Foam	Foam	Foam
Mattress Dimensions	34" x 77" x 3.5"	34" x 118" x 2.5"	36" x 80" x 6"	36" x 80" x 6"	36" x 80" x 6"	36" x 80" x 6"
Weight Capacity	250 lb.	250 lb.	350 lb.	350 lb.	350 lb.	350 lb.
CFR Fire Safety Testing						
16 CFR 1632, 16 CFR 1633	■	Not required	■	■	■	■
Limited Warranty						
Mattress	6 months	30 days	5 year 7 year	5 year	5 year	5 year
Power Unit		1 year				
Cover			1 year	1 year	1 year	1 year

MEDICARE CRITERIA*

Support surfaces may be static (non-powered, reactive) or dynamic (moveable, active). A static surface is recommended if a patient can assume varying positions without bearing weight on a pressure ulcer. Dynamic surfaces are required if the patient cannot change positions without bearing weight on the pressure ulcer OR if the patient fully compresses the static support surface.

Group I Treatment

Group I surfaces may be covered if the patient meets the following criteria:

1. Completely immobile (patient cannot move around without assistance).
2. Limited mobility (patient cannot make changes in body positions significant enough to alleviate pressure) PLUS one of Number 4-7.
3. Any stage pressure ulcer on the trunk or pelvis PLUS one of Numbers 4-7
4. Impaired nutritional status.
5. Fecal or urinary incontinence.
6. Altered sensory perception.
7. Compromised circulatory status.

OR

* Medicare Criteria: This information is not intended to be, nor should it be considered, billing or legal advice. Providers are responsible for determining the appropriate billing codes when submitting claims to the Medicare program, and should consult an attorney or other advisor to discuss specific situations in further detail.

Group II Therapeutic Support Surfaces

	Alternating Pressure			Alternating Pressure Low Air Loss		
Model Name	microAIR® 50 - 5" Overlay	microAIR® 51 Mattress	microAIR® 60 10" AP Mattress	microAIR® 55 AP/LAL	microAIR® 65 AP/LAL	microAIR® 85 True Low Air Loss AP
Model Number	MA50	MA51	MA60	MA55	MA65	MA85
HCPCS Code	E0372 (CR)	E0277 (CR)	E0277 (CR)	E0277 (CR)	E0277 (CR)	E0277 (CR)
Patient Risk Level	Therapy	Therapy	Therapy	Therapy	Therapy	Therapy
Reimbursement Range*	\$458.00 - \$539.00	\$645.46 - \$703.47	\$645.46 - \$703.47	\$645.46 - \$703.47	\$645.46 - \$703.47	\$645.46 - \$703.47
Type of Therapy						
Alternating Pressure		■	■	■	■	■
Low Air Loss				On-demand	On-demand	True
Lateral Rotation						
Features						
Alarm Silence	■	■	■	■	■	■
Blower						1275 LPM
Built-in Side Supports						
Comfort Settings	■	■	■	■	■	■
State of the Art Compressor	10 LPM	10 LPM	50 LPM	10 LPM	50 LPM	
Cover	70 Denier quilted nylon 600 Denier nylon bottom	70 Denier quilted nylon 600 Denier nylon bottom	Dual quilted slip layer cover 1000 Denier nylon bottom	70 Denier quilted nylon 1000 Denier nylon bottom	Dual quilted slip layer cover 1000 Denier nylon bottom	Dual quilted slip layer cover 1000 Denier nylon bottom
Quick CPR Release	■	■	■	■	■	■
Fowler Indicator	■	■	■	■	■	■
Mattress Construction	16 - Bladders	16 -Bladders	20 -Bladders	16 -Bladders	20 -Bladders	20 -Bladders
Mattress Dimensions	36" x 80" x 6"	36" x 80" x 8"	36" x 80" x 10"	36" x 80" x 8"	36" x 80" x 10"	36" x 80" x 10"
Power Failure/Low Pressure Alarm	■	■	■	■	■	■
Quick Connect Coupler	■	■	■	■	■	■ magnetic
Safety Mat 2" Foam		■	■	■	■	■
Therapy Time Settings (min)	5, 10, 15, 20	5, 10, 15, 20	5, 10, 15, 20	5, 10, 15, 20	5, 10, 15, 20	
Weight Capacity	350 lb.	350 lb.	350 lb.	350 lb.	350 lb.	350 lb.
Wireless Fowler			■		■	■
Z Cell						
CFR Fire Safety Testing						
16 CFR 1632, 16 CFR 1633	Not required	■	■	■	■	■
Limited Warranty						
Mattress	1 year	1 year	1 year	1 year	1 year	1 year
Power Unit	2 year	2 year	2 year	2 year	2 year	2 year
Cover	1 year	1 year	1 year	1 year	1 year	1 year

MEDICARE CRITERIA*

Support surfaces may be static (non-powered, reactive) or dynamic (moveable active surface). A static surface is recommended if a patient can assume varying positions without bearing weight on a pressure ulcer, generally a Group I surface. Dynamic surfaces (usually Group II) are required if the patient cannot change positions without bearing weight on the pressure ulcer OR if the patient fully compresses the static support surface.**

Group II Treatment

Group II surfaces may be covered if the patient meets the following criteria:

1. Multiple stage II pressure ulcers located on the trunk or pelvis.

AND

2. Patient has been on a comprehensive ulcer treatment program*** for at least the past month which has included the use of a Group I support surface, and ulcers have worsened or remained the same over the past month.

OR

All references to HCPCS codes: Providers are responsible for determining the appropriate billing codes when submitting claims to the Medicare program and should consult an attorney or other advisor to discuss specific situations in further details. (IN) Inexpensive and routinely purchased (one time payment). (CR) Capped Rental (payment/mo.).

Group II Therapeutic Support Surfaces

	Low Air Loss		Lateral Rotation with Alternating Pressure and Low Air Loss		
Model Name	microAIR® 3500S™	microAIR® 80	microAIR® 90Z Turn/LAL	microAIR® 95Z Turn/LAL	microAIR® Turn-Q™ Plus
Model Number	BB9572000	MA80	MA90Z	MA95Z	BB9612000
HCPCS Code	E0277 (CR)	E0277 (CR)	E0277 (CR)	E0277 (CR)	E0277 (CR)
Patient Risk Level	Therapy	Therapy	Therapy	Therapy	Therapy
Reimbursement Range*	\$645.46 - \$703.47	\$645.46 - \$703.47	\$645.46 - \$703.47	\$645.46 - \$703.47	\$645.46 - \$703.47
Type of Therapy					
Alternating Pressure			■	■	
Low Air Loss	True	True	On-demand	True	True
Lateral Rotation			30 degree Z cell	45 degree Z cell	40 degree Lateral Rotation
Features					
Alarm Silence	■	■	■	■	■
Blower	1000 LPM	1275 LPM		1275 LPM	1000 LPM
Built-in Side Supports			10" Side bolsters	10" Side bolsters	
Comfort Settings	■	■	■	■	■
State of the Art Compressor			50 LPM		
Cover	70 Denier nylon, polyester under layer	Dual quilted slip layer cover 1000 Denier nylon bottom	Urethane with honey comb layer cover 1000 Denier nylon bottom	Urethane 4-way stretch quilted top cover	Breathable while prohibiting moisture and microbe transmission
Quick CPR Release	■	■	■	■	■
Fowler Indicator	■	■	■ on-display	■ on-display	■
Mattress Construction	3 - 9" Bladders	20 -Bladders	24 - Bladders	24 -Bladders	8 Air tubes
Mattress Dimensions	37" x 84" x 8.5"	36" x 80" x 10"	36" x 80" x 10"	36" x 80" x 10"	37" x 84" x 8"
Power Failure/Low Pressure Alarm	■	■	■	■	■
Quick Connect Coupler		■	■	■ magnetic	
Safety Mat 2" Foam		■	■	■	
Therapy Time Settings (min)			10, 20, 30, 60	Custom	
Weight Capacity	350 lb.	350 lb.	350 lb.	350 lb.	500 lb.
Wireless Fowler		■	■	■	
Z Cell			■	■	
CFR Fire Safety Testing					
16 CFR 1632, 16 CFR 1633		■	■	■	Not required
Limited Warranty					
Mattress	6 months	1 year	1 year	1 year	6 months
Power Unit	2 year	2 year	2 year	2 year	2 year
Cover	1 year	1 year	1 year	1 year	1 year

3. Large or multiple stage III or IV pressure ulcer(s) on the trunk or pelvis.

OR

4. Recent myocutaneous flap or skin graft for a pressure ulcer on the trunk or pelvis (surgery within the past 60 days).

AND

5. The patient has been on a group II or III support surface immediately prior to a recent discharge from a hospital or nursing facility (discharge within the past 30 days).

* Medicare Criteria: This information is not intended to be, nor should it be considered, billing or legal advice. Providers are responsible for determining the appropriate billing codes when submitting claims to the Medicare program, and should consult an attorney or other advisor to discuss specific situations in further detail.

** This information is not medical advice. Each individual should always consult with his/her physician to determine proper product selection.

*** Documented comprehensive care plan/treatment program should generally include: education for patient and caregiver on prevention/management of pressure ulcers; regular assessment by a licensed practitioner (weekly if stage 3 or 4, monthly if stage 1 or 2); turning and positioning schedule; appropriate wound care (stage 3 or 4); appropriate management of moisture/ incontinence; nutritional assessment and intervention.



Yes, you can.®

Invacare Corporation

www.invacare.com

USA

One Invacare Way
Elyria, Ohio
44035-4190
(800) 333-6900

Canada

570 Matheson Blvd. E.
Unit 8
Mississauga, Ontario
L4Z 4G4 Canada
(800) 668-5324

©2008 Invacare Corporation.
All rights reserved. Trademarks
are identified by the symbols
™ and ®. All trademarks are
owned by or licensed to
Invacare Corporation unless
otherwise noted.
Specifications are subject to
change without notification.
All products featured
are distributed by
Invacare Corporation.

Form No. 08-047

All references to HCPCS codes:
Providers are responsible for
determining the appropriate
billing codes when submitting
claims to the Medicare
program, and should consult an
attorney or other advisor to
discuss specific situations in
further details.



Therapeutic Foam Mattresses



For more information, contact your Invacare Territory Business Manager at 1-800-333-6900 or visit our website at www.invacare.com