

VERSATEL™
CONTACT LAYER WOUND DRESSING

Educational Packaging

Versatel features Medline's Educational Packaging (EP). The package focuses on patient safety and correct product application. Each dressing and box features instructions for proper application.

VERSATEL™

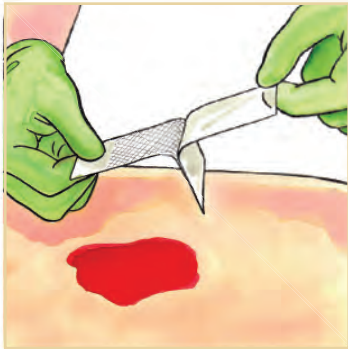
CONTACT LAYER WOUND DRESSING

Versatel™ is a conformable, flexible, translucent silicone wound contact layer. Channels allow fluid to easily transfer to an absorbent dressing. Silicone coating minimizes pain during removal.

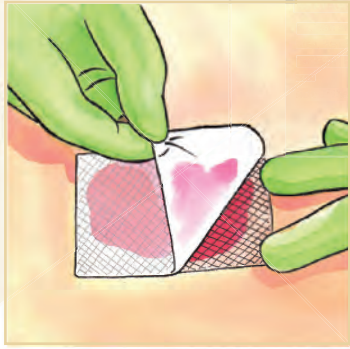
Usos:
Protege la herida
Ayuda en la transferencia de fluidos
Para heridas con exposición parcial y total de tejido

Frecuencia de cambio:
Dura hasta 7 días*

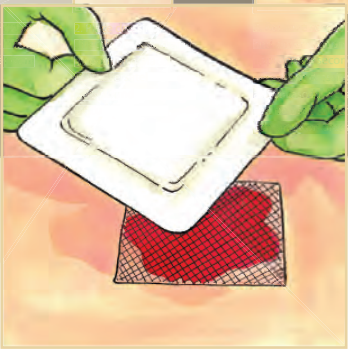
SILICONE CONTACT LAYER



1 Clean and dry peri-wound area. Remove Versatel from package. Remove liner from one side of the dressing.



2 Place dressing directly on wound and smooth into place. NOTE: Versatel can cover peri-wound skin or may be cut if necessary.



3 Remove second liner. Cover with an appropriate absorbent secondary dressing such as Stratasorb®. Versatel can be used under compression dressings.

Versatel Ordering Details

Case Item Number	Description	Packaging
MSC1723EP	2 in x 3 in (5.1 cm x 7.6 cm)	10/bx, 5 bx/cs
MSC1734EP	3 in x 4 in (7.6 cm x 10.2 cm)	10/bx, 5 bx/cs
MSC1747EP	4 in x 7 in (10.2 cm x 17.8 cm)	10/bx, 5 bx/cs
MSC17812EP	8 in x 12 in (20.3 cm x 30.5 cm)	5/bx, 5 bx/cs

To order by the box, add a "Z" to the end of the item number. To order by the each, add an "H" to the end of the item number.



Medline Industries, Inc.
One Medline Place
Mundelein, IL 60060

Medline United States
1-800-MEDLINE (633-5463)
www.medline.com
info@medline.com

Medline Canada
1-800-396-6996
www.medline.ca
canada@medline.com

Medline México
01-800-831-0898
www.medlinemexico.com
mexico@medline.com

Some products may not be available for sale in Mexico or Canada. We reserve the right to correct any errors that may occur within this brochure.
©2012 Medline Industries Inc. Versatel is a trademark and Medline and Stratasorb are registered trademarks of Medline Industries, Inc.

MEDLINE

VERSATEL™
CONTACT LAYER WOUND DRESSING

REMOVES gently
TO minimize PAIN
AND POTENTIAL TISSUE trauma

VERSATEL CONTACT LAYER WOUND DRESSING

ELIMINATES RISK OF SECONDARY DRESSING ADHESION

Versatel is a conformable, flexible, translucent silicone contact layer wound dressing. Channels in the dressing allow fluid to easily transfer to an absorbent secondary dressing. Silicone coating minimizes pain during removal. Recommended for partial and full-thickness wounds.

Gentle

The silicone coating allows for gentle adhesion and eliminates potential trauma from the secondary dressing adhering to the wound.

Conformable

Versatel's flexible and pliable design allows it to conform to body contours, improving patient comfort.



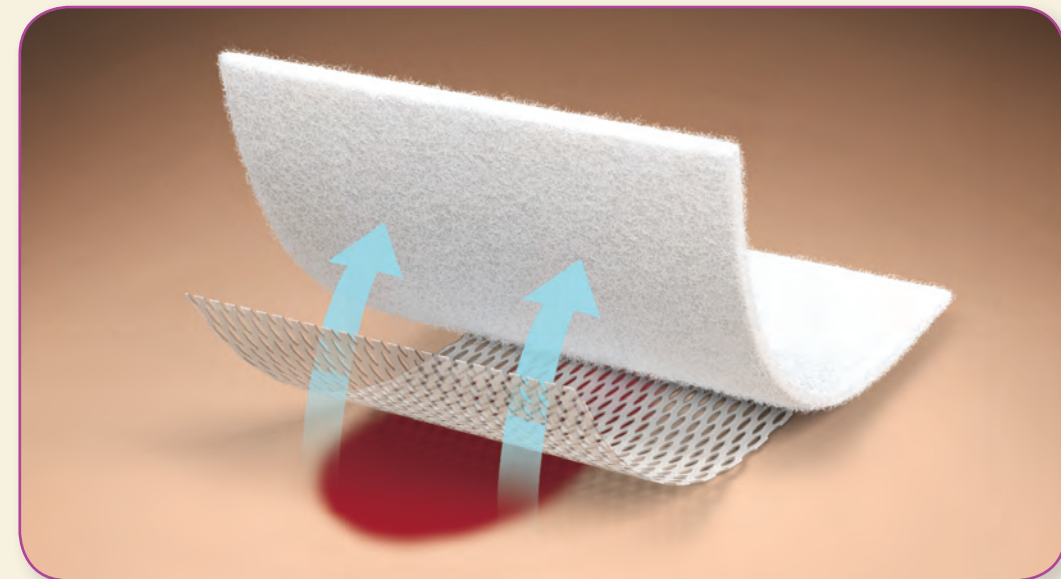
Fluid Transfer

Versatel is designed to allow wound fluid to easily transfer into a secondary dressing.¹

Translucent

Allows easy viewing of the wound upon application and between dressing changes.

Fluid Transferred Through Versatel



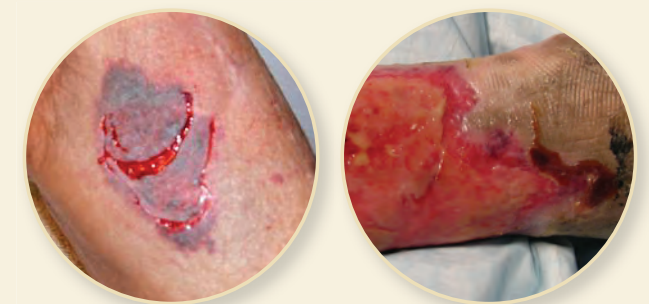
A typical highly exuding wound drains over 10 ml of fluid per day.² In an *in vitro* study that simulates the drainage of a wound, Versatel was shown to be an efficient transfer layer for fluid. Versatel allowed an average of 16.2 ml of fluid to pass through during 2.5 hours, which is equal to 155.52 ml per day.³

INDICATIONS

- Dry to heavily draining abrasions
- Partial and full-thickness wounds
- Venous or pressure ulcers
- Skin tears
- First- and second-degree burns
- Blisters, cuts and lacerations
- Surgical and trauma wounds

CONTRAINDICATIONS

- Third-degree burns
- Individuals with a known sensitivity to silicone
- Not for surgical implantation



CHANGE FREQUENCY

- Dressing change frequency will depend on wound condition

1. Independent laboratory testing. Test reports on file.

2. Mulder GD. Quantifying wound fluids for the clinician and researcher. *Ostomy Wound Manage.* 1994;40(8):66-69.

3. Independent laboratory testing. Test reports on file.