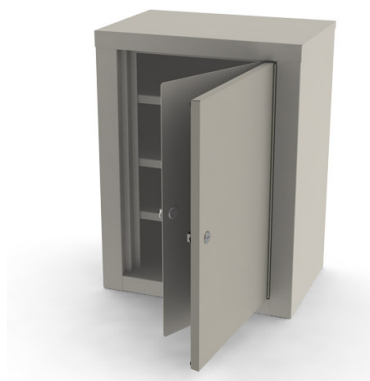


Double Door Steel Narcotic Locker



Heavy Duty Piano Style Door Hinge
Separate Locks on Each Door
Three Adjustable Shelves
Cam-style Locks
3 Year Limited Warranty

Color Chart:



The UMF Medical 7780 double door steel narcotic locker features separate locks on each door, which are keyed differently, three adjustable shelves and is capable of being wall mounted or mounted inside a cabinet.

The 7780 comes with a 3 year limited warranty.

Standard Features

- 20 gauge steel cabinet construction
- 20 gauge double wall outer door
- 14 gauge single wall inner door
- Cam-style locks with 2 keys per lock
- Heavy duty piano style door hinge
- Three adjustable metal shelves
- 12 accent colors available
- 3 year limited warranty

Specifications

- Width: 18.125" (46.0cm)
- Height: 24" (61.0cm)
- Depth: 12.125" (30.8cm)

Options

- 506 – Master key feature (locks keyed differently, with master key)
- 507 – Additional keys (x2)
- 530 – 110V warning light, factory installed (220V also available as special order)