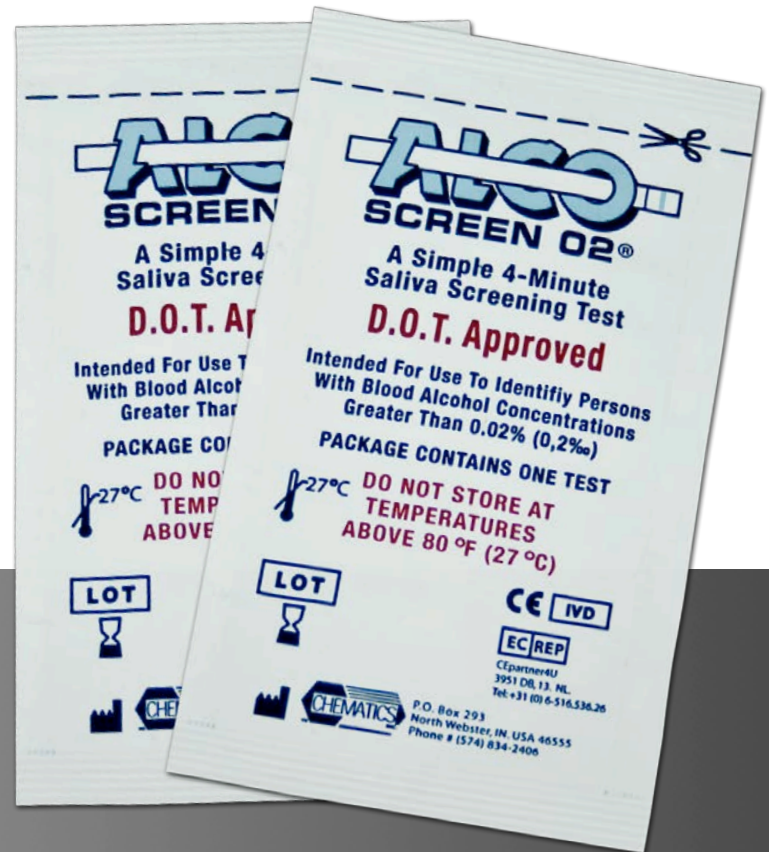


ALCO-SCREEN 02[®]

Saliva test strips

PRODUCT TRAINING PROCEDURES





The information in this presentation is a general overview on using the ALCO-SCREEN 02® test strip.

Product Training Contents:

- ALCO-SCREEN 02® test strip overview
- Collection procedure
- Testing procedure
- Reading results
- Contact information



ALCO-SCREEN 02[®] technical information

It is important to read the package insert before using the ALCO-SCREEN 02[®] test strip.

Screening Results: The ALCO-SCREEN 02[®] is used for **Screening Only**. The rapid test is intended for the semi-quantitation of ethyl alcohol in human saliva. Saliva alcohol content (SAC) can be used as an approximation of current blood alcohol concentration (BAC)*.

A more specific alternate chemical method must be used in order to obtain a confirmed analytical result. Please contact a Redwood Toxicology Laboratory sales representative to review confirmation test options.

Additional testing is necessary to **confirm** the presumptive positive results. Positive results should be “confirmed” by an **alternate method** such as GC/MS (Gas Chromatography/Mass Spectrometry) or LC/MS/MS (Liquid Chromatography/Tandem Mass Spectrometry).

Professional judgment should be applied to any alcohol or drugs of abuse test result, particularly with preliminary positive results.

**See package insert references.*



an Alere company.

For in-vitro diagnostic use.

Product overview



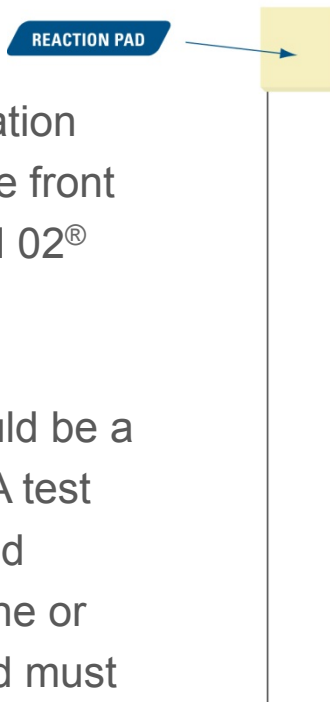
ALCO-SCREEN 02[®] product overview

ALCO-SCREEN 02[®] screens for the presence of alcohol in saliva samples at alcohol concentrations greater than 0.02% SAC.

FEATURES & BENEFITS

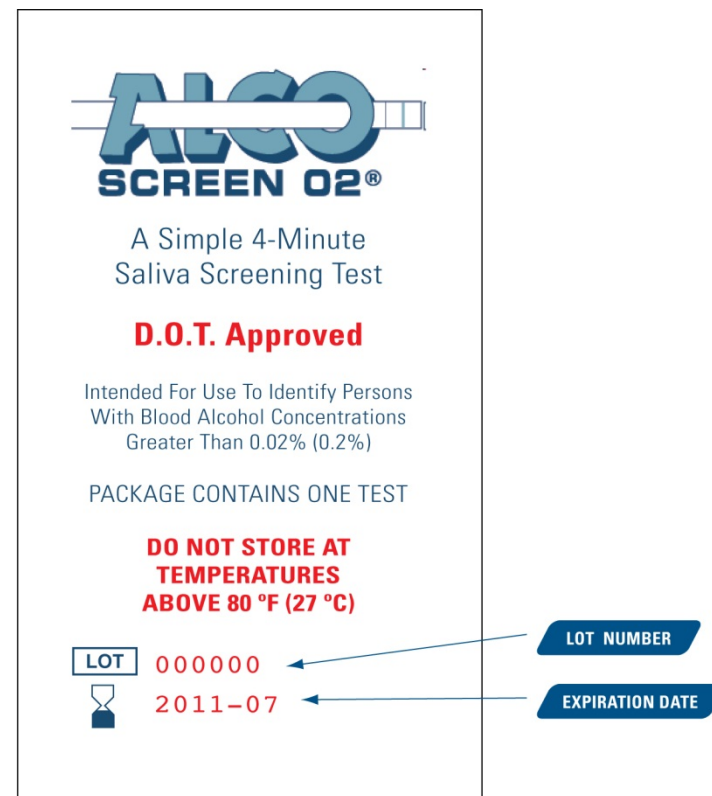
- Semi-quantitative interpretations at 0.02% SAC
- Collect anywhere, anytime
- Results within minutes

ALCO-SCREEN 02[®] components



Lot number and expiration date are located on the front of the ALCO-SCREEN 02[®] test strip's foil pouch.

The reaction pad should be a white or cream color. A test strip with a reagent pad which has a colored line or is otherwise discolored must be discarded.



Pouch Front

Collection procedure

Collecting a saliva specimen

Prior to testing, **DO NOT** place anything in the mouth for at least **15 minutes**.

This includes:

- Food
- Drink
- Tobacco products
- Any other materials

Saliva specimen can be collected in a clean container, or applied directly to the reaction pad of the test strip.

The test strip can also be inserted directly into the mouth.



Testing procedure

Testing procedure

Bring the pouch to room temperature before opening it. Open the foil pouch and remove the ALCO-SCREEN 02® test strip.

It is important to use the test device immediately after the package has been opened.

Saturate the reactive pad by:

- Dipping the pad into the saliva specimen collected in a clean container
- Applying saliva directly to the reaction pad
- Saturate the pad directly in the mouth



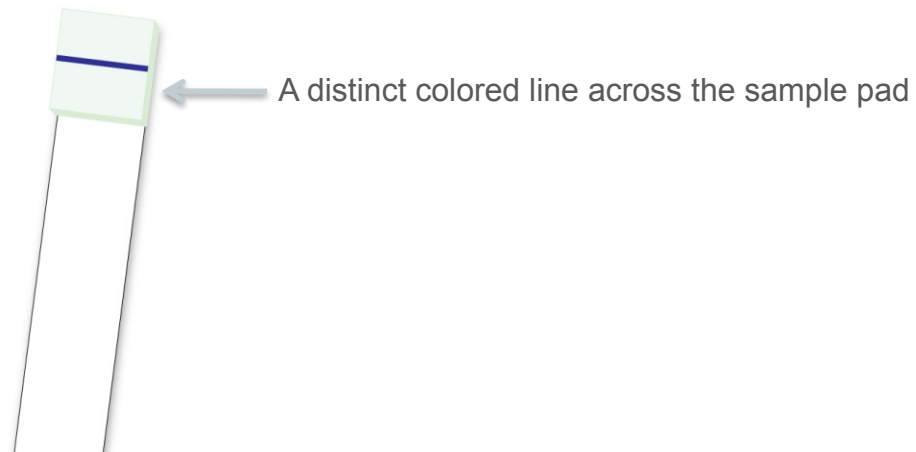
After **10 seconds**, shake off the excess saliva.

Reading results

Reading results

Interpret the test results at **four (4) minutes**. Results obtained after more than five (5) minutes may be erroneous. The ALCO-SCREEN 02® produces a distinct colored line across the reactive pad in the presence of saliva greater than 0.02% BAC. A reagent pad that shows no distinct line should be interpreted as less than 0.02% BAC.

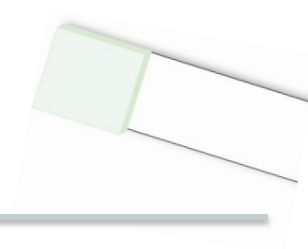
Reading the results may be made easier by placing the test on a white background.



Result interpretation

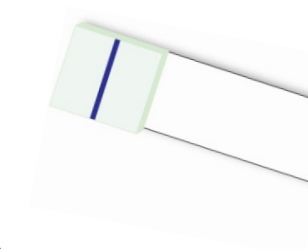
NEGATIVE

A reagent pad that shows no distinct line should be interpreted as less than 0.02% BAC.



PRESUMPTIVE POSITIVE*

A distinct color line will appear through the reactive pad. This indicates a BAC above 0.02%.



**A more specific alternate chemical method must be used in order to obtain a confirmed analytical result. Please contact a Redwood Toxicology Laboratory sales representative to review confirmation test options.*

Additional support services

Additional support services

SENDING SPECIMENS TO THE LABORATORY

» [Download PDF](#)

For instruction on how to send presumptive positive specimens to the lab, please review the next document in the training services: “Shipping & Labeling Protocol”.

COLLECTION AND REPORTING MANAGEMENT

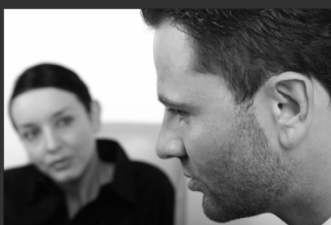
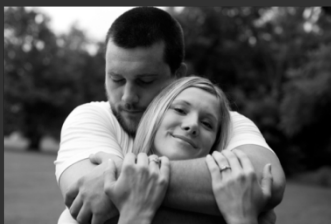
» [Learn more](#)

Take advantage of RTL’s powerful collection and reporting system. Schedule donors, manage on-site tests, view reports and route presumptive positive specimens to the lab.

PRELIMINARY RESULT FORMS

» [Download PDF](#)

Log on-site results by downloading a Preliminary Result Form PDF. Printed form pads are available by request. These forms are not lab test request forms (for further confirmation testing).



Redwood Toxicology Laboratory
an Alere company.

redwoodtoxicology.com

877-444-0049 screening devices
800-255-2159 laboratory services

©2012 Alere. All rights reserved. Reditest and the Redwood Toxicology Laboratory logo are trademarks of the Alere group of companies.