



# EXCEL<sup>®</sup> WHEELCHAIRS

BUILT STRONG TO LAST LONG



Wheelchairs, Accessories and More



# Your Guide to Medline Wheelchairs, Accessories and More.



8



12



16

## Standard Wheelchairs

K1 Basic  
Excel 2000 Narrow  
Excel 2000

## Lightweight Wheelchairs

Excel K3  
K4 Basic  
K4 Standard

## Heavy Duty Wheelchairs

Excel Extra-Wide  
Antimicrobial Wheelchair  
Shuttle  
Freedom Plus  
Plus Size Recliners



Through high quality engineering, extensive safety testing and unique styling, Medline creates wheelchairs that are both comfortable and affordable.

Medline's full line of wheelchairs includes every type of wheelchair from pediatric to bariatric. They are available in various weight capacities, colors and upholstery choices. Every product undergoes extensive inspection, ensuring that the wheelchair addresses the needs of the patient and healthcare worker. All this results in the creation of a reliable, strong and affordable wheelchair guaranteed for years of dependable service.



22



32



38

#### Transport Chairs

Freedom and Freedom 2  
Standard Aluminum Transport  
Deluxe Aluminum Transport  
Translator  
Steel Transport  
Basic Transport

#### Specialty Wheelchairs

Kidz Pediatric  
Hybrid  
Hybrid 2  
Recliner  
MRI

#### Accessories

Wheelchair Cushions  
Trays  
I.V., O<sub>2</sub> and other Accessories  
Anti-Fold Devices  
Anti-Theft Devices



**Medline Quality Assurance** — We are committed to delivering outstanding customer value by providing quality healthcare products and services which consistently meet the needs of our customers. We are committed to continuous improvement of our products, our services, our business processes and our business relationships. We accomplish these objectives by creating and maintaining a quality-focused environment, while deploying our Total Quality Management approach with our valued customers, employees and community.

**Medline Guarantee** — We guarantee everything we sell. Should you have an issue with a Medline product, please call us or speak to your Medline sales representative. We will take care of the problem immediately, either by promptly exchanging the product or crediting your account.

**Your Medline wheelchair has a limited lifetime warranty on the frame and a one (1) year warranty on all other parts.** Medline warrants that the frame will be free from defects in materials and workmanship for the life of the wheelchair. Medline warrants that all other parts of the wheelchair will be free from defects in materials and workmanship for a period of one (1) year from date of purchase by the original customer. This warranty applies only to the original purchaser of the wheelchair and is not transferable to any other entity or person. This warranty does not extend to, and Medline has no liability for, damage or failure occurring as a result of misuse, abuse, modification, loss or casualty, normal wear and tear or other causes unrelated to the manufacture and design of the product.

THIS IS THE SOLE AND EXCLUSIVE WARRANTY FOR THIS PRODUCT. THERE ARE NO OTHER WARRANTIES, EXPRESS OR IMPLIED AND ANY SUCH WARRANTIES ARE DISCLAIMED.

In the event of defect or failure covered by the warranties above, Medline will, at its option, repair or replace the wheelchair or part thereof. In the event of a defect or failure covered by this warranty, contact us at 1-800-MEDLINE. Medline is not responsible to the original purchaser, any user or any third party for any consequential or incidental damages arising from use or misuse of the wheelchair or any part thereof, under any circumstances.

## DISABILITY IS INCREASING

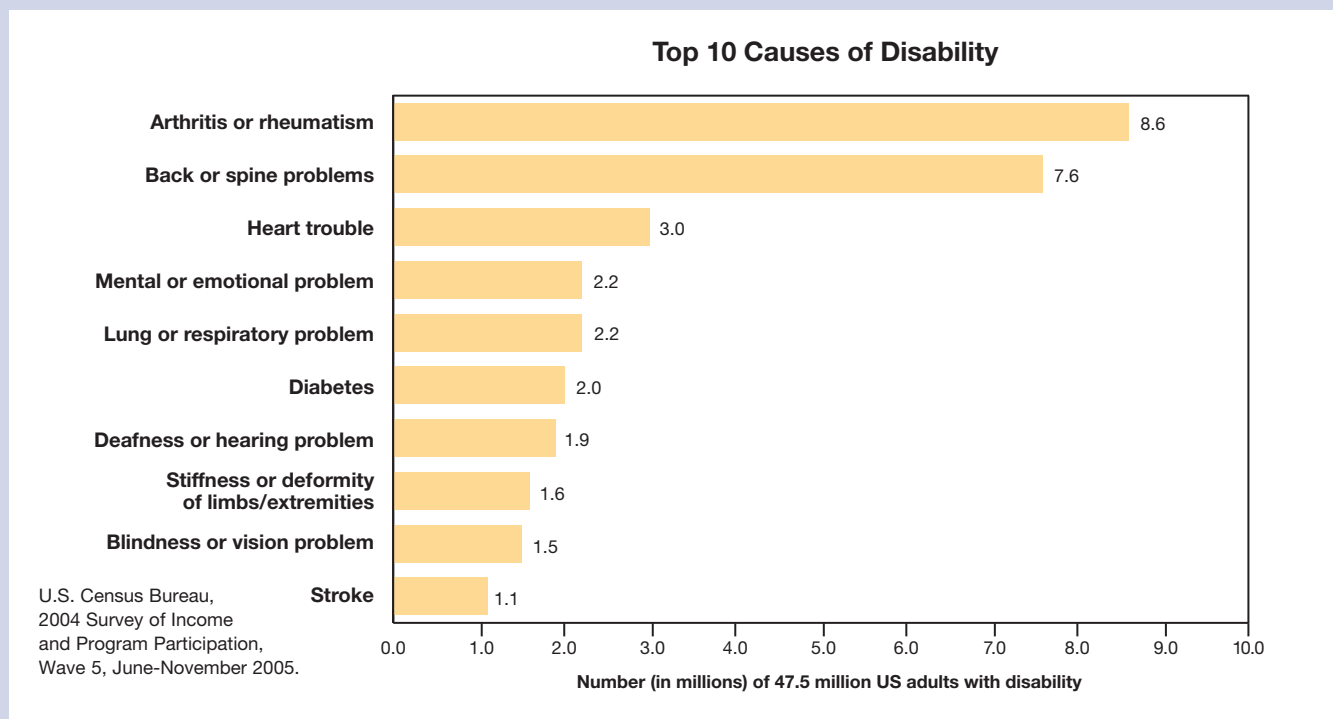
# Number of U. S. Adults Reporting a Disability is Increasing

47.5 million US adults report a disability; more than one-third are aging “baby boomers.”

A new CDC study shows that 47.5 million US adults (21.8%) reported a disability [1] in 2005, an increase of 3.4 million from 1999. Arthritis or rheumatism continues to be the most common cause of disability, while back or spine problems and heart trouble round out the top three causes. The number of people identifying the top two musculoskeletal conditions as the cause of their disability is increasing, but the number of people identifying heart disease as the cause of their disability is decreasing.

Among adults reporting a disability, the most commonly identified limitations were difficulty walking 3 city blocks (22.5 million, 10.3%) and climbing a flight of stairs (21.7 million, 10.0%). That means that 1 in 10 adults reporting a disability have trouble walking a distance equal to walking from the parking lot to the back of a large store or through a mall. The number of people reporting a disability increases with age, and women have a higher prevalence of disability than men at all ages. There are approximately as many “baby boomers” (ages 45–64; 17.3 million) affected now as older adults (age 65+, 18.1 million). Given the size of the baby-boom generation, the number of adults with disability is likely to increase dramatically as the baby boomers enter into higher risk age groups over the next 20 years.

Increasing physical activity, and reducing or preventing obesity and tobacco use can eliminate some of the underlying causes of disability for some people and prevent secondary conditions in those already affected.



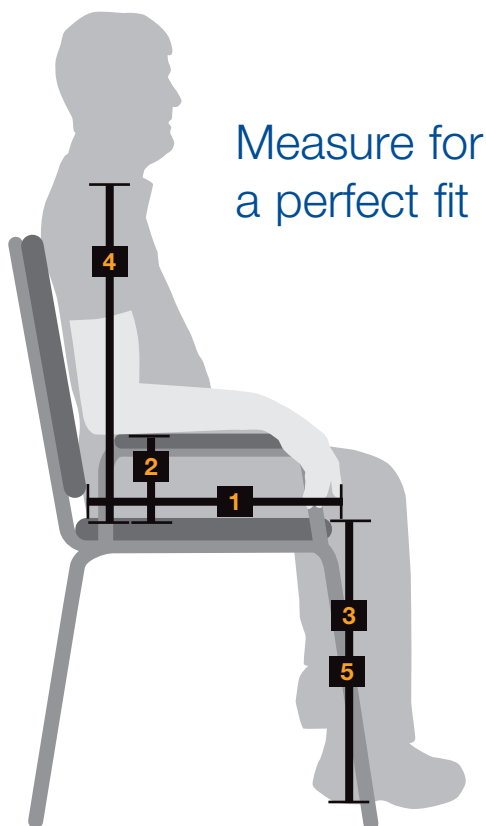
[1] NOTE: Disability was defined as a “yes” response to at least one of the following limitation categories: 1) use of an assistive aid (cane, crutches, walker, or wheelchair), 2) difficulty performing activities of daily living (ADLs) or instrumental activities of daily living (IADLs), or specified functional activities, 3) one or more selected impairments, or 4) limitation in the ability to work around the house or at a job or business.

Excerpts from [www.cdc.gov/Features/disabilitycauses/](http://www.cdc.gov/Features/disabilitycauses/) (Accessed January 3, 2011)



Achieving a proper fit for a user in his or her new wheelchair can be extremely critical to the patient's health and wellness. It can make the difference between either promoting recovery or causing further injury. Some of the issues that an improper fit can cause for the user of the wheelchair are:

- Posture issues
- Breathing problems
- Sores
- Discomfort
- Pelvic issues
- Hip problems



## How to determine which wheelchair is the best fit.

### 1 Determine Seat Size

- Seat width should be determined by measuring from hip to hip in a straight line. Add two inches to this measurement.
- Seat depth should be determined by measuring from the back of the hip to the back of the knee of the user while seated. Subtract one inch from this measurement.

### 2 Determine Arm Type and Height

- If the user is going to be standing up to do pivot transfers, they will require a full-length arm on the chair to help support them as they push off to stand.
- Desk-length arms are suggested for ease of use with tables and desks.
- Determine the height of the wheelchair arm by measuring from the elbow to the seat of the chair while the user is holding their arms up with their elbows bent at a ninety degree angle. Height adjustable arms are suggested when possible.

### 3 Determine Footrest Style

- Elevating legrests are always suggested when patients are required to raise their legs for conditions such as edema, swelling or injury.
- Determine the length of the footrest by measuring from the back of the knee to the heel of the foot.
- In taller patients, consider using articulating legrests. These legrests extend longer as the elevating portion of the leg rest rises.

### 4 Determine Back Height

- Determine the measurement from the patient's scapula or collarbone down to the seat while the user is sitting in a chair.
- Taller back heights may be required for patients that require upper trunk support or other support devices that may be installed for the user.

### 5 Determine Floor to Seat Height

- Determine if the user will need to use his or her feet to propel or move. Measure the distance between the back of the knee to the heel to determine the seat to floor height.

### 6 Determine Wheelchair Weight and Weight Limit

- Determine the patient's weight in order to choose what weight capacity wheelchair will be required.
- Determine the level of upper body strength in the user. Weaker patients will require lighter wheelchairs.



## PREVENTING WHEELCHAIR THEFT

Wheelchair theft has been a problem for many institutions for years, but with the increased unemployment and higher costs of living, preventing theft has become imperative.

Wheelchairs are stolen for a variety of reasons. The person checking out of the hospital who is recently disabled but unable to afford the equipment he or she needs to function from day to day is often the culprit. Occasionally a patient may have recently broken his or her equipment and is unable to replace the chair. There have even been cases of a patient arriving in a broken and abused chair and swapping it out for a newer chair. Sometimes the chairs are found miles away at a subway station, shopping center, in parking garages, or even on the street near parking spaces.

Unfortunately, many hospital directors have to budget for the loss of equipment each year and it has become an expected loss. Missing chairs account for a large amount of lost dollars to an institution because the chairs are not available when and where they are needed. Often, the institution orders replacement chairs that may not have been needed. Here are some ways to guard against wheelchair loss and theft.

- 1. Choose a model that fewer people want to steal.** The type of chair that is purchased may have a huge effect on how many of the wheelchairs are stolen. If a wheelchair can be user-propelled then it greatly increases the usefulness of the wheelchair to the patient. By using a transport chair that is less desirable to the patient, an institution can greatly reduce the number of stolen chairs.
- 2. Label the chairs to identify your institution and the department to which the chairs belong.** Adding custom logos, embroidery, stenciling, or ordering chairs in different colors may help. These differences can make it easier for security or parking lot attendants to spot a chair when it is moved outside of its normal usage area.

- 3. Attach anti-fold devices below the seat or overhead to discourage theft.**

Preventing the patient from being able to put a wheelchair in his or her vehicle has also proven to be an effective deterrent for theft. Anti-theft and anti-fold bars are common solutions to this problem. Preventing a wheelchair from being folded causes it to be exceedingly difficult when attempting to stow the wheelchair into a vehicle. Overhead anti-theft devices can help to make the chair too tall or long to be stored in a vehicle. Adding a flag or a fixed height IV pole can also decrease the convenience of folding and storing the wheelchair.

- 4. Setting up designated storage areas, numbering chairs, labeling chairs to specific wings or departments, or even the use of tracking devices** can bring the incident rate of lost chairs down. Some locations go so far as to offer a day of amnesty for a patient to return, without repercussions, the wheelchairs that he or she may have “accidentally” acquired.

- 5. Lock the legrests on the chair.**

Missing parts is also a large problem in many locations, but this is easily preventable. By installing Tinnerman nuts on the chair, the legrests become permanently attached to the chair. These caps come with a wrench that is used to tighten a set screw into the pins that keep the legrests on the wheelchairs. They install in less than two minutes, but can save hours of wasted time searching for leg riggings that fit your chair.



A Transport or Companion Chair may greatly decrease theft



Numbering or labeling chairs to specific wings or departments can decrease theft and help to keep chairs in their designated area.



Overhead Anti-Theft Device  
**MDS85197A**



Below-Seat  
Anti-Fold/Anti-Theft Device  
**MDS85196**

For 24-30" (61-76 cm) Models  
**MDS85196SSH**



Tinnerman Legrest Locks, pair  
(For preventing theft of leg riggings)  
**WCA806991**



## Value-Added Programs



### FREE Custom Laminated Labels

Stolen or lost wheelchairs are a frustrating problem for many institutions. Medline wants to help you solve that problem. For a limited time, when you order ten or more wheelchairs, we'll design custom, full-color, laminated labels you can put on the outside of the wheelchair's side panels. These attractive labels are great for discouraging theft and advertising your business or institution's name. All you have to do is give us your logo electronically and our graphic artists will do the rest! Your wheelchairs will look attractive and become a new marketing tool for your business or institution.

- Waterproof
- A theft deterrent
- Customized to your logo, fonts and colors
- Specify different departments
- Easily affixes to side panels on wheelchairs



### Buy Factory Direct for Additional Savings!

Save up to 10% by using our "Factory Direct to You Program". Order now and receive:

- Free freight on all direct shipments
- Product delivered right to your door
- 90 days to pay after arrival of goods
- Finest quality embroidery or silkscreening of your logo available
- Custom packaging





Standard Wheelchairs  
Mobility and Convenience in One



# Excel K1 Basic | STANDARD

- Elevating legrest models feature a notched, stainless steel ratchet bar to lock the legrests securely in place
- Durable tig-welded frame in gray powder coat finish
- Comfortable nylon upholstery
- Smooth-rolling solid, latex, flat-free tires
- Dual axle hemi-height adjustable
- Weighs 38 lbs (17 kg)



MDS806300EE

## ACCESSORIES

### MDS85181U

O<sub>2</sub> Holder

### MDS85196

Anti-Fold Device

### MDS85183

I.V. Pole

### MDS85197A

Overhead Anti-Theft Device

### MDS85190

O<sub>2</sub> / I.V. Combo

### MDS85189

Anti-Tip Device

### WCA806991

Tinnerman Legrest Locks

CHAIR	ARM STYLE	LEG STYLE	SEAT W X D INCHES (CM)	HCPCS	WT. CAP. LB (KG)
<b>MDS806250NEE</b>	Desk Length Removable	Detachable Footrest	16 x 16 (41 x 41)	K0001 or K0002	300 (136)
<b>MDS806300NEE</b>	Desk Length Removable	Detachable Elevating Legrest	16 x 16 (41 x 41)	K0001 or K0002 K0195	300 (136)
<b>MDS806150EE</b>	Full Length Permanent	Detachable Footrest	18 x 16 (46 x 41)	K0001 or K0002	300 (136)
<b>MDS806200EE</b>	Full Length Permanent	Detachable Elevating Legrest	18 x 16 (46 x 41)	K0001 or K0002 K0195	300 (136)
<b>MDS806250EE</b>	Desk Length Removable	Detachable Footrest	18 x 16 (46 x 41)	K0001 or K0002	300 (136)
<b>MDS806300EE</b>	Desk Length Removable	Detachable Elevating Legrest	18 x 16 (46 x 41)	K0001 or K0002-K0195	300 (136)
<b>MDS806400EE</b>	Desk Length Removable	Detachable Footrest	20 x 16 (51 x 41)	K0006+E2201	300 (136)
<b>MDS806450EE</b>	Desk Length Removable	Detachable Elevating Legrest	20 x 16 (51 x 41)	K0006+E2201 K0195 or E0990	300 (136)

This product contains dry natural rubber

# Excel 2000 Narrow | STANDARD

- Elevating legrest models feature a notched, stainless steel ratchet bar to lock the legrests securely in place
- Carbon steel frame with rust- and chip-resistant chrome plating
- Padded and upholstered armrests and calf pads
- Threaded seat screw inserts reduce stripping from upholstery changes
- Dual axle hemi-height adjustable
- Chart pocket on back
- Durable navy blue vinyl upholstery
- Weighs 38 lbs (17 kg)



MDS806250N

## ACCESSORIES

### MDS85181U

O<sub>2</sub> Holder

### MDS85196

Anti-Fold Device

### MDS85183

I.V. Pole

### MDS85197A

Overhead Anti-Theft Device

### MDS85190

O<sub>2</sub> / I.V. Combo

### MDS85189

Anti-Tip Device

### WCA806991

Tinnerman Legrest Locks

CHAIR	ARM STYLE	LEG STYLE	SEAT W X D INCHES (CM)	HCPCS	WT. CAP. LB (KG)
<b>MDS806150N</b>	Full Length Permanent	Detachable Footrest	16 x 16 (41 x 41)	K0001	300 (136)
<b>MDS806200N</b>	Full Length Permanent	Detachable Elevating Legrest	16 x 16 (41 x 41)	K0001 or K0002+K0195 or E0990	300 (136)
<b>MDS806250N</b>	Desk Length Removable	Detachable Footrest	16 x 16 (41 x 41)	K0001 or K0002	300 (136)
<b>MDS806300N</b>	Desk Length Removable	Detachable Elevating Legrest	16 x 16 (41 x 41)	K0001 or K0002+K0195	300 (136)
<b>MDS806250NFLA</b>	Full Length Removable	Detachable Footrest	16 x 16 (41 x 41)	K0001 or K0002	300 (136)
<b>MDS806300NFLA</b>	Full Length Removable	Detachable Elevating Legrest	16 x 16 (41 x 41)	K0001 or K0002 K0195	300 (136)



# Excel 2000 | STANDARD

- Elevating legrest models feature a notched, stainless steel ratchet bar to lock the legrests securely in place
- Carbon steel frame with rust- and chip-resistant chrome plating
- Padded and upholstered armrests and calf pads are standard
- Threaded seat screw inserts reduce stripping from upholstery changes
- Dual axle hemi-height adjustable
- Chart pocket on back
- Easy-to-clean vinyl upholstery
- Weighs 38 lbs (17 kg)

## ACCESSORIES

### MDS85181U

O<sub>2</sub> Holder

### MDS85196

Anti-Fold Device

### MDS85183

I.V. Pole

### MDS85197A

Overhead Anti-Theft Device

### MDS85190

O<sub>2</sub> / I.V. Combo

### MDS85189

Anti-Tip Device

### WCA806991

Tinnerman Legrest Locks

**RBV (Ruby)**

**NAVY (Navy)**

**D (Black)**



MDS806300D

CHAIR	ARM STYLE	LEG STYLE	SEAT W X D INCHES (CM)	HCPCS	WT. CAP. LB (KG)
<b>MDS806100*</b>	Full Length Permanent	Permanent Footrest	18 x 16 (46 x 41)	K0001 or K0002	300 (136)
<b>MDS806150*</b>	Full Length Permanent	Detachable Footrest	18 x 16 (46 x 41)	K0001 or K0002	300 (136)
<b>MDS806200*</b>	Full Length Permanent	Detachable Elev. Legrest	18 x 16 (46 x 41)	K0001 or K0002 K0195 or E0990	300 (136)
<b>MDS806250*</b>	Desk Length Removable	Detachable Footrest	18 x 16 (46 x 41)	K0001 or K0002	300 (136)
<b>MDS806250DFLA**</b>	Full Length Removable	Detachable Footrest	18 x 16 (46 x 41)	K0001 or K0002	300 (136)
<b>MDS806300*</b>	Desk Length Removable	Detachable Elev. Legrest	18 x 16 (46 x 41)	K0001 or K0002	300 (136)
<b>MDS806300DFLA**</b>	Full Length Removable	Detachable Elev. Legrest	18 x 16 (46 x 41)	K0001 or K0002	300 (136)
<b>MDS806400**</b>	Desk Length Removable	Detachable Footrest	20 x 16 (51 x 41)	K0001 or K0002 E2201	300 (136)
<b>MDS806450**</b>	Desk Length Removable	Detachable Elev. Legrest	20 x 16 (51 x 41)	K0001 E2201 K0195	300 (136)

\*To order, add the letter color code shown above designating color to the end of the item number. \*\*Available only in standard black upholstery.





Lightweight Wheelchairs  
For Quality and Durability



# Excel K3 | LIGHTWEIGHT

- Elevating legrest models feature a notched, stainless steel ratchet bar to lock the legrests securely in place
- Threaded seat screw inserts reduce stripping from upholstery changes
- Padded and upholstered armrests and calf pads are standard
- Durable, tig-welded frame with black powder coat finish
- Comfortable nylon upholstery
- Dual axle hemi-height adjustable
- Weighs 35 lbs (16 kg)



MDS806650

## ACCESSORIES

### MDS85181U

O<sub>2</sub> Holder

### MDS85196

Anti-Fold Device

### MDS85183

I.V. Pole

### MDS85197A

Overhead Anti-Theft Device

### MDS85190

O<sub>2</sub> / I.V. Combo

### MDS85189

Anti-Tip Device

### WCA806991

Tinnerman Legrest Locks

CHAIR	ARM STYLE	LEG STYLE	SEAT W X D INCHES (CM)	HCPCS	WT. CAP. LB (KG)
<b>MDS806600N (Narrow)</b>	Desk Length Removeable	Detachable Footrest	16 x 16 (41 x 41)	K0003	300 (136)
<b>MDS806650N (Narrow)</b>	Desk Length Removeable	Detachable Elevating Legrest	16 x 16 (41 x 41)	K0003 K0195	300 (136)
<b>MDS806600</b>	Desk Length Removeable	Detachable Footrest	18 x 16 (46 x 41)	K0003	300 (136)
<b>MDS806650</b>	Desk Length Removeable	Detachable Elevating Legrest	18 x 16 (46 x 41)	K0003 K0195	300 (136)
<b>MDS806600FLA</b>	Full Length Removeable	Detachable Footrest	18 x 16 (46 x 41)	K0003	300 (136)
<b>MDS806650FLA</b>	Full Length Removeable	Detachable Elevating Legrest	18 x 16 (46 x 41)	K0003 K0195	300 (136)

# K4 Basic | LIGHTWEIGHT

- Elevating legrest models feature a notched, stainless steel ratchet bar to lock the legrests securely in place
- Durable, tig-welded frame with gray powder coat finish
- Swing-back arms with easy flip back arm release
- Dual axle hemi-height adjustable
- Smooth-rolling solid flat-free latex tires
- Adjustable-height back
- Comfortable nylon upholstery
- Weighs less than 34 lbs (15.5 kg)



MDS806550E

## ACCESSORIES

### MDS85181U

O<sub>2</sub> Holder

### MDS85196

Anti-Fold Device

### MDS85183

I.V. Pole

### MDS85197A

Overhead Anti-Theft Device

### MDS85190

O<sub>2</sub> / I.V. Combo

### MDS85189WK4

Anti-Tip Device

### WCA806991

Tinnerman Legrest Locks

CHAIR	ARM STYLE	LEG STYLE	SEAT W X D INCHES (CM)	HCPCS	WT. CAP. LB (KG)
<b>MDS806500NE</b>	Swing Back Desk Length	Detachable Footrest	16 x 16 (41 x 41)	K0004	300 (136)
<b>MDS806550NE</b>	Swing Back Desk Length	Detachable Elevating Legrest	16 x 16 (41 x 41)	K0004 K0195	300 (136)
<b>MDS806500E</b>	Swing Back Desk Length	Detachable Footrest	18 x 16 (46 x 41)	K0004	300 (136)
<b>MDS806550E</b>	Swing Back Desk Length	Detachable Elevating Legrest	18 x 16 (46 x 41)	K0004 K0195	300 (136)
<b>MDS806560E</b>	Swing Back Desk Length	Detachable Footrest	20 x 18 (51 x 46)	K6 E2201	300 (136)
<b>MDS806565E</b>	Swing Back Desk Length	Detachable Elevating Legrest	20 x 18 (51 x 46)	K6+E0990 K0195 E2201	300 (136)



# K4 Standard | LIGHTWEIGHT

- Elevating legrest models feature a notched, stainless steel ratchet bar to lock the legrests securely in place
- Swing back arms with easy flip back arm release
- Padded and upholstered armrests and calf pads are standard
- Quick release axles allow tool-free removal of rear wheels
- Dual axle hemi-height adjustable
- Adjustable height back
- Tough nylon upholstery
- Weighs less than 34 lbs (15.5 kg)

## ACCESSORIES

### MDS85181U

O<sub>2</sub> Holder

### MDS85196

Anti-Fold Device

### MDS85183

I.V. Pole

### MDS85190

O<sub>2</sub> / I.V. Combo

### MDS85189WK4

Anti-Tip Device

### WCA806922EXT

Seat Extension Kit  
(18" wide only)

### WCA806991

Tinnerman Legrest Locks



MDS806550

CHAIR	ARM STYLE	LEG STYLE	SEAT W X D INCHES (CM)	HCPCS	WT. CAP. LB (KG)
MDS806500N	Swing Back Desk Length	Detachable Footrest	16 x 16 (41 x 41)	K0004	300 (136)
MDS806550N	Swing Back Desk Length	Detachable Elev. Legrest	16 x 16 (41 x 41)	K0004 K0195 or E0990	300 (136)
MDS806500NLA	Swing Back Full Length	Detachable Footrest	16 x 16 (41 x 41)	K0004	300 (136)
MDS806500	Swing Back Desk Length	Detachable Footrest	18 x 16 (46 x 41)	K0004	300 (136)
MDS806550	Swing Back Desk Length	Detachable Elev. Legrest	18 x 16 (46 x 41)	K0004	300 (136)
MDS806500LA	Swing Back Full Length	Detachable Footrest	18 x 16 (46 x 41)	K0004	300 (136)
MDS806550LA	Swing Back Full Length	Detachable Elev. Legrest	18 x 16 (46 x 41)	K0004	300 (136)
MDS806500PLUS*	Swing Back Height Adj. Desk Length	Detachable Footrest	18 x 16 (46 x 41)	K0004	300 (136)
MDS806550PLUS*	Swing Back Height Adj. Desk Length	Detachable Elev. Legrest	18 x 16 (46 x 41)	K0004	300 (136)
MDS806560	Swing Back Desk Length	Detachable Footrest	20 x 18 (51 x 41)	K0004 E2201	350 (159)
MDS806560PLUS*	Swing Back Height Adj. Desk Length	Detachable Footrest	20 x 18 (51 x 41)	K0004 E2201	350 (159)
MDS806565	Swing Back Desk Length	Detachable Elev. Legrest	20 x 18 (51 x 41)	K0004 E2201 K0195	350 (159)
MDS806570	Swing Back Desk Length	Detachable Footrest	22 x 18 (56 x 41)	K0004 E2201	350 (159)
MDS806575	Swing Back Desk Length	Detachable Elev. Legrest	22 x 18 (56 x 41)	K0004 E2201 K0195	350 (159)

\* Includes Anti-Tippers and Height Adjustable Desk Length Arms





Heavy Duty Wheelchairs  
Extra Strong for Added Comfort



# Extra-Wide | HEAVY DUTY

- Elevating legrest models feature a notched, stainless steel ratchet bar to lock the legrests securely in place.
- Threaded seat screw inserts minimize stripping from upholstery changes
- Padded and upholstered armrests and calf pads are standard
- Carbon steel frame with rust- and chip-resistant chrome plating
- Easy-to-clean navy vinyl upholstery
- Chart pocket on back



MDS806850

## ACCESSORIES

### MDS85196

Anti-Fold Device

### MDS85197A

Overhead Anti-Theft Device for 18" – 22" Models

### MDS85183

I.V. Pole

### MDS85181U

O<sub>2</sub> Holder

### MDS85190

O<sub>2</sub> / I.V. Combo

### MDS85189

Anti-Tip Device

### MDS85192

22" Pushbar

### WCA806991

Tinnerman Legrest Locks

### MDS851965SH

Anti-fold 24" Models

### MDS851975SH

Overhead Anti-Theft Device for 24" Models

CHAIR	ARM STYLE	LEG STYLE	SEAT W X D INCHES (CM)	HCPCS	WT. CAP. LB (KG)
<b>MDS806700</b>	Desk Length Removable	Detachable Footrest	20 x 18 (51 x 46)	K0007	350 (159)
<b>MDS806750</b>	Desk Length Removable	Detachable Elevating Legrest	20 x 18 (51 x 46)	K0007	350 (159)
<b>MDS806700FLA</b>	Full Length Removable	Detachable Footrest	20 x 18 (51 x 46)	K0007	350 (159)
<b>MDS806750FLA</b>	Full Length Removable	Detachable Elevating Legrest	20 x 18 (51 x 46)	K0007	350 (159)
<b>MDS806800</b>	Desk Length Removable	Detachable Footrest	22 x 18 (56 x 46)	K0007	350 (159)
<b>MDS806850</b>	Desk Length Removable	Detachable Elevating Legrest	22 x 18 (56 x 46)	K0007	350 (159)
<b>MDS806800FLA</b>	Full Length Removable	Detachable Footrest	22 x 18 (56 x 46)	K0007	350 (159)
<b>MDS806850FLA</b>	Full Length Removable	Detachable Elevating Legrest	22 x 18 (56 x 46)	K0007	350 (159)
<b>MDS806900</b>	Desk Length Removable	Detachable Footrest	24 x 18 (61 x 46)	K0007 E2202	450 (204)
<b>MDS806950</b>	Desk Length Removable	Detachable Elevating Legrest	24 x 18 (61 x 46)	K0007 E2202 K0195	450 (204)

# Antimicrobial Protected Wheelchair | **HEAVY DUTY**

- All major patient contact surfaces are treated with Microban® antimicrobial technology
- Microban® technology works continuously to inhibit the growth of stain and odor causing bacteria
- Carbon steel frame with rust- and chip-resistant beige powdercoat finish
- Arm pads are adjustable between desk length and full length position with the push of a button
- Easy-to-clean black vinyl upholstery
- Chart pocket on back

## ACCESSORIES

### MDS85196

Anti-Fold Device

### MDS85197A

Overhead Anti-Theft Device

### MDS85183

I.V. Pole

### MDS85181U

O<sub>2</sub> Holder

### MDS85190

O<sub>2</sub> / I.V. Combo

### MDS85189

Anti-Tip Device

### MDS85192

22" Pushbar

### WCA806991

Tinnerman Legrest Locks



Patent Pending



MDS806850AM

Easy push button for adjustable arm positions



CHAIR	ARM STYLE	LEG STYLE	SEAT W X D INCHES (CM)	HCPCS	WT. CAP. LB (KG)
MDS806850AM	Adjustable Between Desk-Length and Full Length	Detachable Footrest	22 x 18 (56 x 46)	K0007	350 (159)



# Shuttle Bariatric | HEAVY DUTY

- Elevating legrest models feature a notched, stainless steel ratchet bar to lock the legrests securely in place
- Removable padded armrests and legrests provide extra comfort and make exiting easy
- Double cross-brace for maximum support and durability
- Hemi-height adjustable with a triple axle design
- Attractive gray hammertone finish
- Comfortable nylon upholstery



MDS809750

## ACCESSORIES

### MDS851965SH

Anti-Fold Device

### MDS85197SH

Overhead Anti-Theft Device

### MDS85189SH

Anti-Tip Device

### WCA806965SH

Swing Away Footrest

### WCA806991

Tinnerman Legrest Locks

CHAIR	ARM STYLE	LEG STYLE	SEAT W X D INCHES (CM)	HCPCS	WT. CAP. LB (KG)
<b>MDS809650</b>	Desk Length Removable	Detachable Elevating Legrest	24 x 20 (61 x 51)	K0007+E2202 K0195 or E0990	700 (318)
<b>MDS809750</b>	Desk Length Removable	Detachable Elevating Legrest	26 x 20 (66 x 51)	K0007+E2202 K0195 or E0990	700 (318)
<b>MDS809850</b>	Desk Length Removable	Detachable Elevating Legrest	28 x 20 (71 x 51)	K0007+K0108 K0195 or E0990	700 (318)
<b>MDS809585</b>	Full Length Removable	Detachable Elevating Legrest	30 x 20 (76 x 51)		700 (318)

# Freedom Plus | HEAVY DUTY TRANSPORT

- Back folds down for easy storage and transport
- Handbrakes for better control
- Easy-to-clean vinyl upholstery
- Push bar with foam grip standard
- Convenient cup holder
- Seat belt for safety
- 12" rear wheels
- Anti-tippers standard
- Chart pocket on back
- Weighs 33 lbs (15 kg)

## ACCESSORIES

### MDS85183

I.V. Pole

### MDS85181U

O<sub>2</sub> Holder

### MDS85190FT

O<sub>2</sub> / I.V. Combo

### MDS85196

Anti-Fold Anti-Theft Device



MDS808200BAR

CHAIR	ARM STYLE	LEG STYLE	SEAT W X D INCHES (CM)	HCPCS	WT. CAP. LB (KG)
MDS808200BAR	Full Length Permanent	Elevating Legrest	22 x 18 (56 x 46)	E1039	400 (181)



# Regency XL 2000 Recliner | **HEAVY DUTY**

- Folding frame construction up to 34" wide
- Adult, hemi and super hemi seat to floor height options, 15", 16", 17" or 18"
- Adjustable back height, 16", 17" or 32" from seat to top of back
- Dual square cross braces for added support
- 115° reclining back



G673020617829

## ACCESSORIES

### GDC13

O<sub>2</sub> Holder for Reclining Wheelchair

### GDC14

I.V. Holder for Reclining Wheelchair

### GDC85

Anti-Tippers

### GDC86

Wheel Lock Extensions

### GDC40

Full Width Pushbar

### WCA806991

Tinnerman Legrest Locks

CHAIR	ARM STYLE	LEG STYLE	SEAT W X D INCHES (CM)	HCPCS	WT. CAP. LB (KG)
<b>G672420617829</b>	Desk Length Removable	Detachable Elevating Legrest	24 x 20 (61 x 51)	K0007	700 (318)
<b>G672620617829</b>	Desk Length Removable	Detachable Elevating Legrest	26 x 20 (66 x 51)	K0007	700 (318)
<b>G672820617829</b>	Desk Length Removable	Detachable Elevating Legrest	28 x 20 (71 x 51)	K0007	700 (318)
<b>G673020617829</b>	Desk Length Removable	Detachable Elevating Legrest	30 x 20 (76 x 51)	K0007	700 (318)
<b>G673220617829</b>	Desk Length Removable	Detachable Elevating Legrest	32 x 20 (81 x 51)	K0007	700 (318)





Transport Wheelchairs  
A Perfect Companion



# Freedom | TRANSPORT

- Back folds down for easy storage and transport
- Back side features bottle holder, key ring, cell phone pocket, identification holder and pocket for billfold or iPod
- Comfortable nylon upholstery
- Convenient carrying handles on seat
- Restaurant-style permanent armrest
- Convenient cup holder
- Seat belt for safety
- 8" rear wheels
- Weighs less than 15 lbs (7 kg)



MDS808200SLBR



MDS808200SLKR



MDS808200SLPR



MDS808200SLSR

**Patented Design**

## ACCESSORIES

### MDS85183FT\*

I.V. Pole

### MDS85181FT\*

O<sub>2</sub> Holder

### MDS85190FT\*

O<sub>2</sub> / I.V. Combo

### MDS85189FT

Anti-Tip Device

### MDS85196

Anti-Fold Anti-Theft Device

### MDSCHAIRCASE

Carrying Case with Strap

### WCA806991

Tinnerman Legrest Locks

\*Recommended for use with Anti-Tip Device



MDS808200SLRR

CHAIR	COLOR	LEG STYLE	SEAT W X D INCHES (CM)	HCPCS	WT. CAP. LB (KG)
<b>MDS808200SLRR</b>	Red	Detachable Footrest	19 x 16 (48 x 41)	E1038	300 (136)
<b>MDS808200SLBR</b>	Blue	Detachable Footrest	19 x 16 (48 x 41)	E1038	300 (136)
<b>MDS808200SLSR</b>	Metallic Silver	Detachable Footrest	19 x 16 (48 x 41)	E1038	300 (136)
<b>MDS808200SLPR</b>	Pink	Detachable Footrest	19 x 16 (48 x 41)	E1038	300 (136)
<b>MDS808200SLKR</b>	Black	Detachable Footrest	19 x 16 (48 x 41)	E1038	300 (136)

# Freedom 2 | TRANSPORT

- Back folds down for easy storage and transport
- Back side features bottle holder, key ring, cell phone pocket, identification holder and pocket for billfold or iPod
- Comfortable nylon upholstery
- Convenient side bag for extra storage
- Restaurant-style permanent armrest
- Convenient cup holder
- Seat belt for safety
- Tool-free adjustable footrests
- Weighs less than 15 lbs (7 kg)

## ACCESSORIES

**MDS85183FT\***

I.V. Pole

**MDS85181FT\***

O<sub>2</sub> Holder

**MDS85190FT\***

O<sub>2</sub> / I.V. Combo

**MDS85189FT**

Anti-Tip Device

**MDS85196**

Anti-Fold Anti-Theft Device

**WCA806991**

Tinnerman Legrest Locks

**MDSCHAIRCASE**

Carrying Case with Strap

\*Recommended for use with Anti-Tip Device

Patented  
Design

Convenient Side Carrying Case  
Side Clips Secure Footrests so  
Footrests Can Stay on Chair  
Push Button Adjustable Footrests



MDS808200F2R

CHAIR	COLOR	LEG STYLE	SEAT W X D INCHES (CM)	HCPCS	WT. CAP. LB (KG)
<b>MDS808200F2R</b>	Red	Detachable Footrest	19 x 16 (48 x 41)	Pending	300 (136)
<b>MDS808200F2B</b>	Blue	Detachable Footrest	19 x 16 (48 x 41)	Pending	300 (136)
<b>MDS808200F2P</b>	Pink	Detachable Footrest	19 x 16 (48 x 41)	Pending	300 (136)
<b>MDS808200F2S</b>	Metallic Silver	Detachable Footrest	19 x 16 (48 x 41)	Pending	300 (136)





Choose the color that fits your lifestyle, and Enjoy the convenient cup holder and carrying pack.



## Take it Anywhere.

Weighing less than 15 lbs (7 kg), the Freedom 2 lets you and your companion to go anywhere, anytime.

# Standard Aluminum | TRANSPORT

- Powder coated aluminum frame is lightweight and durable
- Back folds down for easy storage and transport
- Seat belt for safety
- Comfortable nylon upholstery
- Pocket on back
- Padded arms
- Weighs 19 lbs (8.5 kg)

## ACCESSORIES

### MDS85183FT\*

I.V. Pole

### MDS85181FT\*

O<sub>2</sub> Holder

### MDS85190FT\*

O<sub>2</sub> / I.V. Combo

### MDS85189FT

Anti-Tip Device

### MDSCHAIRCASE

Carrying Case with Strap

### MDS85196

Anti-Fold Anti-Theft Device

### WCA806991

Tinnerman Legrest Locks

\*Recommended for use with Anti-Tip Device



MDS808200AB



CHAIR	COLOR	ARM STYLE	LEG STYLE	SEAT W X D INCHES (CM)	HCPCS	WT. CAP. LB (KG)
<b>MDS808200AR</b>	Red	Full Length Permanent	Detachable Footrest	19 x 16 (48 x 41)	E1038	300 (136)
<b>MDS808200AB</b>	Blue	Full Length Permanent	Detachable Footrest	19 x 16 (48 x 41)	E1038	300 (136)



# Deluxe Aluminum | TRANSPORT

- Powder coated aluminum frame is lightweight and durable
- Additional wheellock for patient access
- Handbrakes for better control
- Back folds down for easy storage and transport
- Pocket on back
- Seat belt for safety
- Padded armrests
- Comfortable nylon upholstery
- Weighs 23 lbs (10 kg)

## ACCESSORIES

### MDS85183FT\*

I.V. Pole

### MDS85181FT\*

O<sub>2</sub> Holder

### MDS85190FT\*

O<sub>2</sub> / I.V. Combo

### MDS85189FT

Anti-Tip Device

### MDS85196

Anti-Fold Anti-Theft Device

### WCA806991

Tinnerman Legrest Locks

### MDSCHAIRCASE

Carrying Case with Strap

\*Recommended for use with Anti-Tip Device



MDS808210AR



CHAIR	COLOR	ARM STYLE	LEG STYLE	SEAT W X D INCHES (CM)	HCPCS	WT. CAP. LB (KG)
<b>MDS808210AR</b>	Red	Full Length Permanent	Detachable Footrest	19 x 16 (48 x 41)	E1038	300 (136)
<b>MDS808210AB</b>	Blue	Full Length Permanent	Detachable Footrest	19 x 16 (48 x 41)	E1038	300 (136)

# Translator | TRANSPORT

- Easy-to-adjust push-button footrests lock to sides of translator when not in use
- Breathable nylon upholstery
- Height-adjustable push grips
- Comfortable hand brake
- Restaurant-style permanent armrests
- Convenient side carrying case
- Convenient cup holder
- Roomy, under-seat basket
- Strong carrying handles
- Weighs 18 lbs (8 kg)

**Patented Design**

**Flip it to convert it!**



MDS808200TRR

Combine the functionality of both a rollator and transport chair into one unit.

**SEE THE VIDEO ONLINE**

## The Excel Translator

In just seconds, the Combination Transport Chair/Rollator easily converts from a rollator to a transport chair.

[View The Video](#)



[www.medline.com/durable-medical-equipment/](http://www.medline.com/durable-medical-equipment/)

## TRANSPORT MODE



MDS808200TR

## ROLLATOR MODE



MDS808200TR





## Walk,

## Rest,

## Ride!

In just seconds, our Excel Translator easily converts from a rollator to a transport chair and vice-versa. The Excel Translator allows rollator users to sit down and ride in a transport chair when their legs get tired. And, transport chair users can stand up and walk along when they want to get more exercise. Best of all, you only need to own one piece of equipment, rather than two!

The Excel Translator weighs only 18 lbs (8 kg) which is no heavier than the average rollator or transport chair. It comes with a convenient cup holder, under-the-seat basket, zippered side carrying case, and easy-to-adjust push-button foot rests. You will be delighted with the comfortable, spacious seat which is more than 75% roomier than our average rollator seat.

CHAIR	COLOR	LEG STYLE	SEAT W X D INCHES (CM)	HCPCS	WT. CAP. LB (KG)
<b>MDS808200TRR</b>	Red	Swing-Away Detachable Footrest	19 x 16 (48 x 41)	E0143 E0156	250 (113)
<b>MDS808200TR</b>	Blue	Swing-Away Detachable Footrest	19 x 16 (48 x 41)	E0143 E0156	250 (113)

# Steel | TRANSPORT

- Back folds down for easy storage and transport
- Carbon steel frame with chip-resistant chrome plating
- Comfortable nylon upholstery
- Seat belt for safety
- Padded armrests
- Weighs 25 lbs (12 kg)



MDS808200

## ACCESSORIES

**MDS85183FT\***  
I.V. Pole

**MDS85181FT\***  
O<sub>2</sub> Holder

**MDS85190FT\***  
O<sub>2</sub> / I.V. Combo

**MDS85189FT**  
Anti-Tip Device

**MDS85196**  
Anti-Fold Anti-Theft Device

**WCA806991**  
Tinnerman Legrest Locks

**MDSCHAIRCASE**  
Carrying Case with Strap

\*Recommended for use with Anti-Tip Device

CHAIR	ARM STYLE	LEG STYLE	SEAT W X D INCHES (CM)	HCPCS	WT. CAP. LB (KG)
<b>MDS808150</b>	Full Length Permanent	Detachable Footrest	17 x 16 (43 x 41)	E1038	300 (136)
<b>MDS808200</b>	Full Length Permanent	Detachable Footrest	19 x 16 (48 x 41)	E1038	300 (136)



# Basic Steel | TRANSPORT

- Back folds down for easy storage and transport
- Carbon steel frame with silver powder coat
- Comfortable nylon upholstery
- Seat belt for safety
- Restaurant-style permanent armrests
- Durable plastic arm pads
- Weighs 24 lbs (11 kg)



## ACCESSORIES

**MDS85183FT\***  
I.V. Pole

**MDS85181FT\***  
O<sub>2</sub> Holder

**MDS85190FT\***  
O<sub>2</sub> / I.V. Combo

**MDS85189FT**  
Anti-Tip Device

**MDS85196**  
Anti-Fold Anti-Theft Device

**WCA806991**  
Tinnerman Legrest Locks

**MDSCHAIRCASE**  
Carrying Case with Strap

\*Recommended for use with Anti-Tip Device

CHAIR	LEG STYLE	SEAT W X D INCHES (CM)	HCPCS	WT. CAP. LB (KG)
<b>MDS808150E</b>	Detachable Footrest	17 x 16 (43 x 41)	Pending	250 (113)
<b>MDS808200E</b>	Detachable Footrest	19 x 16 (48 x 41)	Pending	250 (113)



Specialty Wheelchairs  
Working for a Variety of Needs



# Excel Kidz Pediatric | SPECIALTY

- Adjustable telescoping handles for caregiver comfort
- Durable vinyl upholstery
- Treaded, flat-free tires for safe riding
- Anti-tippers included
- Standard dual axle allows for easy adjustment of seat height to hemi level
- Padded and upholstered armrests and calf pads come standard
- Flip-back arms



## ACCESSORIES

### MDS85181U

O<sub>2</sub> Holder

### MDS85183

I.V. Pole

### MDS85190

O<sub>2</sub> / I.V. Combo

### MDS85196K

Anti-Fold Device

### MDS85197K

Overhead Anti-Theft Device

### WCA806991

Tinnerman Legrest Locks

CHAIR	ARM STYLE	LEG STYLE	SEAT W X D INCHES (CM)	HCPCS	WT. CAP. LB (KG)
<b>MDS806140PEDE</b>	Swing Back Desk Length Permanent	Detachable Elevating Legrests	14 x 12 (36 x 30)	E1229	250 (113)

# Hybrid | SPECIALTY

- Combination wheelchair and transport chair
- Two chairs in one
- Rear wheels remove with just the push of a button
- Weighs only 38 lbs (17 kg), 29 lbs (13 kg) in transport mode
- Converts easily in seconds
- Vinyl upholstery is easy to keep clean



SEE THE VIDEO ONLINE



[www.medline.com/durable-medical-equipment/](http://www.medline.com/durable-medical-equipment/)

## ACCESSORIES

### MDS85181U

O<sub>2</sub> Holder

### MDS85196

Anti-Fold Device

### MDS85183

I.V. Pole

### MDS85197A

Overhead Anti-Theft Device

### WCA806991

Tinnerman Legrest Locks

### MDS85190

O<sub>2</sub> / I.V. Combo

### MDS85189

Anti-Tip Device



Excel 3000 still available with hemi-height adjustable dual axle



MDS806300HBD

HYBRID IN TRANSPORT MODE

CHAIR	ARM STYLE	LEG STYLE	SEAT W X D INCHES (CM)	HCPCS	WT. CAP. LB (KG)
<b>MDS806250NHBD</b>	Desk Length Removable	Swing-Away Detachable Footrest	16 x 16 (41 x 41)	K0001 or E0138	300 (136)
<b>MDS806150HBD</b>	Full Length Permanent	Swing-Away Detachable Footrest	18 x 16 (46 x 41)	K0001 or E0138	300 (136)
<b>MDS806200HBD</b>	Full Length Permanent	Swing-Away Detachable Elevating Legrest	18 x 16 (46 x 41)	K0001 or E0138	300 (136)
<b>MDS806250HBD</b>	Desk Length Removable	Swing-Away Detachable Footrest	18 x 16 (46 x 41)	K0001 or E0138	300 (136)
<b>MDS806300HBD</b>	Desk Length Removable	Swing-Away Detachable Elevating Legrest	18 x 16 (46 x 41)	E0138 or K0001 K0195 or E0990	300 (136)
<b>EXCEL 3000</b>					
<b>MDS806300NDLX</b>	Desk Length Removable	Swing-Away Detachable Elevating Legrest	16 x 16 (41 x 41)	Pending	300 (136)
<b>MDS806300DLX</b>	Desk Length Removable	Swing-Away Detachable Elevating Legrest	18 x 16 (46 x 41)	K0001 K0195	300 (136)
<b>WCAWHEELKIT</b> (Transport wheel kit for the Excel 3000)					



# Hybrid 2 | SPECIALTY

- Combination wheelchair and transport chair
- Two chairs in one
- Rear wheels remove with just the push of a button
- Weighs only 33 lbs (15 kg), 24 lbs (11 kg) in transport
- Converts easily in seconds
- Comfortable nylon upholstery
- Includes anti-tippers

## ACCESSORIES

### MDS85181U

O<sub>2</sub> Holder

### MDS85196

Anti-Fold Device

### MDS85183

I.V. Pole

### MDS85197A

Overhead Anti-Theft Device

### WCA806991

Tinnerman Legrest Locks

### MDS85190

O<sub>2</sub> / I.V. Combo



MDS806250H2



HYBRID 2 IN TRANSPORT MODE

CHAIR	ARM STYLE	LEG STYLE	SEAT W X D INCHES (CM)	HCPCS*	WT. CAP. LB (KG)
<b>MDS806250NH2</b>	Desk Length Removable	Swing-Away Detachable Footrest	16 x 16 (41 x 41)	Pending	300 (136)
<b>MDS806150H2</b>	Full Length Permanent	Swing-Away Detachable Footrest	18 x 16 (46 x 41)	Pending	300 (136)
<b>MDS806200H2</b>	Full Length Permanent	Swing-Away Detachable Elevating Legrest	18 x 16 (46 x 41)	Pending	300 (136)
<b>MDS806250H2</b>	Desk Length Removable	Swing-Away Detachable Footrest	18 x 16 (46 x 41)	Pending	300 (136)
<b>MDS806300H2</b>	Desk Length Removable	Swing-Away Detachable Elevating Legrest	18 x 16 (46 x 41)	Pending*	300 (136)

\*Medline submitted application for K0004 code

# Recliner | SPECIALTY

- Infinite position reclining goes from 90° to 140° degrees with quick adjust handles.
- Full back and head support is provided by 22" high back and 10" removable headrest
- Carbon steel frame with chip-resistant chrome plating
- 16" and 18" models feature a dual axle that allows for easy adjustment of seat height to hemi level
- Anti-tippers standard
- Durable vinyl upholstery

## ACCESSORIES

### MDS85196

Anti-Fold Device

### WCA806991

Tinnerman Legrest Locks

**See page 21 for  
Heavy Duty Recliners.**



MDS808450

CHAIR*	ARM STYLE	LEG STYLE	SEAT W X D INCHES (CM)	HCPCS	WT. CAP. LB (KG)
<b>MDS808350</b>	Desk Length Removable	Detachable Elevating Legrest	16 x 17 (41 x 43)	K0003 E0966 E1225 K0195 E0971	300 (136)
<b>MDS808450</b>	Desk Length Removable	Detachable Elevating Legrest	18 x 17 (46 x 43)	K0003 E0966 E1225 K0195 E0971	300 (136)
<b>MDS808550</b>	Desk Length Removable	Detachable Elevating Legrest	20 x 17 (51 x 43)	K0003 E0966 E2201 E1225 K0195 E0971	350 (159)
<b>MDS808650</b>	Desk Length Removable	Detachable Elevating Legrest	22 x 17 (56 x 43)	—	350 (159)



## PVC MRI Chair

- Healthcare-grade PVC pipe and fittings inhibit the growth of bacteria
- Cushioned mesh sling seat and back
- Textured hand grips
- Wheel locks
- Folding footrest



PVCM1311824WM

## Metal MRI Chair

- Safe for use in and around the MRI suite
- Constructed of non-magnetic materials
- Features swing-back arms, swing-away footrests



GDCMR4000QC



CHAIR	INTERNAL WIDTH INCHES (CM)	EXTERNAL WIDTH INCHES (CM)	TOTAL HEIGHT X LENGTH INCHES (CM)	SEAT W X D INCHES (CM)	WT. CAP. LB (KG)
PVCM1311824WM	18 (46)	29 (74)	40 x 33 (102 x 84)	18 x 18 (46 x 46)	300 (136)
GDCMR4000QC	20 (51)	28 (71)	20 x 16 (51 x 41)	20 x 18 (51 x 46)	350 (159)

# Cushions

## STEP BY STEP ORDERING GUIDES

### Step 1: Choose the Level of Pressure Redistribution

#### ☐ **Advanced**

Significant pressure redistribution for highest risk patients or those with pressure ulcers. Will address positioning needs. May be adjustable to meet individual patient needs.

#### ☐ **Moderate**

Helps redistribute pressure for those at risk for pressure ulcers. May also help with positioning needs.

#### ☐ **Basic**

Adds comfort for lower risk seated individuals.

### Step 2: Choose the Type of Cushion Material

#### ☐ **Air Cell Cushion**

Typically provides the most advanced pressure redistribution. These cushions are adjustable to meet the individual needs of each patient. Redistribute pressure very well by distributing weight evenly. Tracks patient movements and adjusts to patient's body contours, reducing pressure points.

#### ☐ **Gel & Foam Cushion**

Typically provides moderate to advanced pressure redistribution. Most common design is gel sacks placed between higher quality foams. Gel sacks separated into quadrants perform best by keeping gel focused under problem areas to reduce pressure. Also designed to reduce shear and heat.

#### ☐ **Foam Cushion**

Most economical material. Typically used for comfort through moderate pressure redistribution. Different density foams can be used to address patient comfort, including more expensive visco elastic memory foams. Different cut patterns are often used to prevent shear and help reduce pressure.

### Step 3: Choose the Best Cushion Design

#### ☐ **Flat Cushions**

Sometimes referred to as a zero elevation cushion, it has the same thickness across the entire cushion. Can be used for comfort or pressure redistribution.



#### ☐ **Wedge Cushions**

Thicker in the front and angling down to a thinner back, it provides support, stability and pressure redistribution for active users that tend to slide forward.



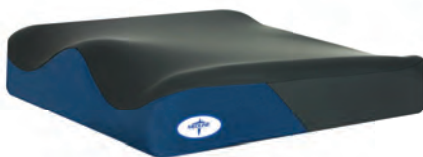
#### ☐ **Pommel Cushions**

Abducts legs to reduce skin shear and pressure. Provides proper alignment to reduce hip rotation. Can be used on a flat or wedge cushion.



#### ☐ **Contour Cushions**

Sometimes referred to as a saddle cushion, it emphasizes proper positioning and leg alignment while reducing hip rotation. Provides pressure redistribution and comfort by increasing seating area.



#### ☐ **Anti-Thrust Cushions**

Has a one inch shelf in the middle to reduce thrusting and sliding forward. Helps reduce sacral sitting. Low profile front minimizes leg elevation.



#### ☐ **Back Cushions**

Provides comfort, support and cushioning on back and spine. Helps redistribute pressure while eliminating the hammock effect of a sling back.





# Advanced | PRESSURE REDISTRIBUTION CUSHIONS



MSCCONPL1816

**Medline Contour Plus** — A skin protection and positioning cushion. The high resiliency foam cushion features a segmented gel insert and waterfall front that help to redistribute weight and relieve pressure. The incontinence proof PolyX cover has four way stretch for better performance and is easy-to-clean.

HCPCS Code: E2607

CUSHION	SEAT W X D-INCHES (CM)
<b>MSCCONPL1616</b>	16 x 16 (41 x 41)
<b>MSCCONPL1618</b>	16 x 18 (41 x 46)
<b>MSCCONPL1816</b>	18 x 16 (46 x 41)
<b>MSCCONPL1818</b>	18 x 18 (46 x 46)
<b>MSCCONPL2016</b>	20 x 16 (51 x 41)
<b>MSCCONPL2018</b>	20 x 18 (51 x 46)

HCPCS Code: E2608

CUSHION	SEAT W X D-INCHES (CM)
Larger sizes	
<b>MSCCONPL2218</b>	22 x 18 (56 x 46)
<b>MSCCONPL2418</b>	24 x 18 (61 x 46)



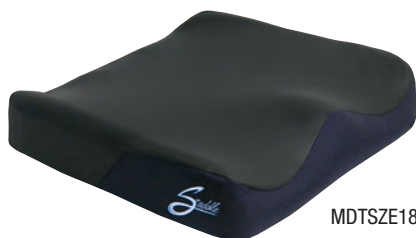
MSCVIS1816

## Medline Visco Foam

Uses three different foam layers including high resiliency foam which molds to the user's exact anatomical contour. This provides both maximum seating surface area for reducing high pressure zones and substantial contour to properly position the user.

HCPCS Code: E2603

CUSHION	SEAT W X D INCHES (CM)
<b>MSCVIS1616</b>	16 x 16 x 4 (41 x 41 x 10)
<b>MSCVIS1816</b>	18 x 16 x 4 (46 x 41 x 10)
<b>MSCVIS1818</b>	18 x 18 x 4 (46 x 46 x 10)
<b>MSCVIS2016</b>	20 x 16 x 4 (51 x 41 x 10)



MDTSZE1816

**The Saddle Cushion** — Promotes proper leg alignment. This zero elevation cushion reduces hip rotation and pelvic obliquity. Contoured leg adductors and abductors increase overall seating surface area, helping to redistribute weight and reduce pressure.

HCPCS Code: E2607

CUSHION	SEAT W X D INCHES (CM)
<b>MDTSZE1616</b>	16 x 16 (41 x 41)
<b>MDTSZE1618</b>	16 x 18 (41 x 46)
<b>MDTSZE1816</b>	18 x 16 (46 x 41)
<b>MDTSZE2018</b>	20 x 18 (51 x 46)

**Saddle Gel Cushion** — with new, improved Quadra 3D® gel pack. A supple polyurethane bladder conforms to the user's body, providing even greater pressure relief.

HCPCS Code: E2607

GEL CUSHION	SEAT W X D INCHES (CM)
<b>MDTSZEG1616</b>	16 x 16 (41 x 41)
<b>MDTSZEG1618</b>	16 x 18 (41 x 46)
<b>MDTSZEG1816</b>	18 x 16 (46 x 41)
<b>MDTSZEG2018</b>	20 x 18 (51 x 46)

# Advanced | PRESSURE REDISTRIBUTION CUSHIONS

## Air Cell Cushions — Offer superb pressure relief.

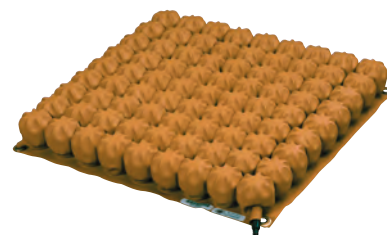
These therapeutic cushions provide ultimate care to fragile tissue. Individual cells adjust to each patient's body contours, flexing in multiple directions and decreasing body weight per unit area of the cushion. Made of flame-retardant, latex-free neoprene rubber, it comes with a washable all-way stretch cover and hand pump for inflation. Two heights available.



HCPCS Code: K0734

CUSHION CONTOUR	SEAT W X D X H INCHES (CM)
4" (10cm) High—Maximum Support	
<b>MSC1S1515</b>	16 x 16 x 4 (41 x 41 x 10)
<b>MSC1S1715</b>	18 x 16 x 4 (46 x 41 x 10)
<b>MSC1S1717</b>	18 x 18 x 4 (46 x 46 x 10)
<b>MSC1S1917</b>	20 x 16 x 4 (51 x 46 x 10)

MSC1S1715



HCPCS Code: K0734

CUSHION CONTOUR	SEAT W X D X H INCHES (CM)
2" (5cm) Short—For Active Patients	
<b>MSC1S1515L</b>	16 x 16 x 2 (41 x 41 x 5)
<b>MSC1S1715L</b>	18 x 16 x 2 (46 x 41 x 5)
<b>MSC1S1717L</b>	18 x 18 x 2 (46 x 46 x 5)
<b>MSC1S1917L</b>	20 x 18 x 2 (51 x 46 x 5)

MSC1S1715L

**Roho Quadro Select®** — An adjustable skin protection and positioning cushion. The revolutionary ISOFL0® Memory Control offers shape fitting capabilities. With the built-in stability and simplicity of the Quadro Select cushion, no longer will you have to sacrifice maximum skin protection to get stability, positioning or convenience.



MSCQS109C

HCPCS Code: K0736

CUSHION	SEAT W X D X H INCHES (CM)
Low Profile—2" (5cm) Height	
<b>MSCQS99LPC</b>	16 x 16 x 2 (41 x 41 x 5)
<b>MSCQS109LPC</b>	18 x 16 x 2 (46 x 41 x 5)
<b>MSCQS1010LPC</b>	18 x 18 x 2 (46 x 46 x 5)
<b>MSCQS1011LPC</b>	18 x 20 x 2 (46 x 51 x 5)
<b>MSCQS1111LPC</b>	20 x 20 x 2 (51 x 51 x 5)

HCPCS Code: K0736

CUSHION	SEAT W X D X H INCHES (CM)
High Profile—4" (10cm) Height	
<b>MSCQS99C</b>	16 x 16 x 4 (41 x 41 x 10)
<b>MSCQS109C</b>	18 x 16 x 4 (46 x 41 x 10)
<b>MSCQS1010C</b>	18 x 18 x 4 (46 x 46 x 10)
<b>MSCQS1011C</b>	18 x 20 x 4 (46 x 51 x 10)
<b>MSCQS1111C</b>	20 x 20 x 4 (51 x 51 x 10)



# Moderate

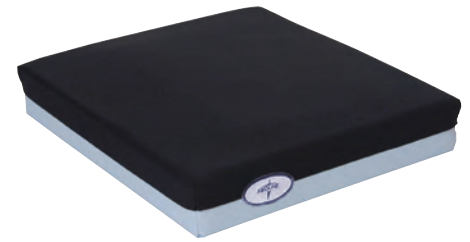
## PRESSURE REDISTRIBUTION CUSHIONS



**Medline Contour Basic Cushion Keeps Body Aligned, Reduces Pressure** These single-density foam cushions have a contoured design that aligns hips and legs while reducing pressure on any one area. ShearX all-way stretch cover reduces skin shear and is antimicrobial and fluid-proof. Works with sling or pan style chairs.

HCPCS Code: E2601

CUSHION	SEAT W X D INCHES (CM)	CUSHION	SEAT W X D INCHES (CM)
<b>MSCCB1616</b>	16 x 16 (41 x 41)	<b>MSCCB1818</b>	18 x 18 (46 x 46)
<b>MSCCB1816</b>	18 x 16 (46 x 41)	<b>MSCCB2016</b>	20 x 16 (51 x 41)



### Medline's Nylex-Covered Gel/Foam Wheelchair Cushions Reduce Pressure

Designed for both comfort and function, Nylex-Covered Gel/Foam wheelchair cushions utilize a gel pack placed between two layers of resilient foam to stabilize wheelchair patients while reducing pressure.

HCPCS Code: E2603

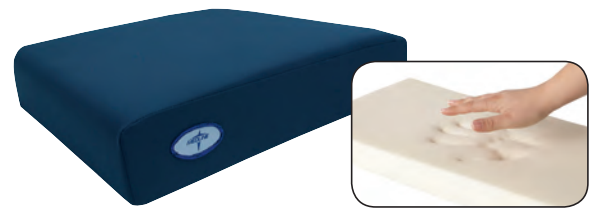
CUSHION	SEAT W X D X H INCHES (CM)
<b>MSCPRC31616</b>	16 x 16 x 3 (41 x 41 x 8)
<b>MSCPRC31816</b>	18 x 16 x 3 (46 x 41 x 8)
<b>MSCPRC31818</b>	18 x 18 x 3 (46 x 46 x 8)
<b>MSCPRC32016</b>	20 x 16 x 3 (51 x 41 x 8)



### Medline Wedge with Gel

This therapeutic cushion has a wedge design that helps prevent patients from sliding forward. Two layers of high-density foam provide a stable foundation, while the four-section gel pack helps relieve pressure. ShearX all-way stretch cover reduces skin shear and is antimicrobial and fluid proof. Cushion has a non-skid bottom and a strap to hold it in place.

CUSHION	SEAT W X D X H - INCHES (CM)
<b>MSCWG1616</b>	16 x 16 (41 x 41)
<b>MSCWG1816</b>	18 x 16 (46 x 41)
<b>MSCWG1818</b>	18 x 18 (46 x 46)
<b>MSCWG2016</b>	20 x 16 (51 x 41)



### Medline Visco Cushion

The Medline Visco Cushion utilizes state-of-the-art visco elastic memory foam that cradles the patient's bony prominences to redistribute pressure. This pressure-reducing cushion has a bottom layer of open cell foam to add additional support and comfort. Anti-shear cover is easy-to-clean and is fluid-proof.

HCPCS Code: E2603

CUSHION	SEAT W X D X H INCHES (CM)
<b>MSCVC1616</b>	16 x 16 x 3 (41 x 41 x 8)
<b>MSCVC1618</b>	18 x 16 x 3 (46 x 41 x 8)
<b>MSCVC1816</b>	18 x 16 x 3 (46 x 41 x 8)
<b>MSCVC1818</b>	18 x 18 x 3 (46 x 46 x 8)
<b>MSCVC2016</b>	20 x 16 x 3 (51 x 41 x 8)
<b>MSCVC2018</b>	20 x 18 x 3 (51 x 46 x 8)

HCPCS Code: E2604

CUSHION	SEAT W X D X H INCHES (CM)
Larger sizes	
<b>MSCVC2218</b>	22 x 18 x 3 (56 x 46 x 8)
<b>MSCVC2418</b>	24 x 18 x 3 (61 x 46 x 8)

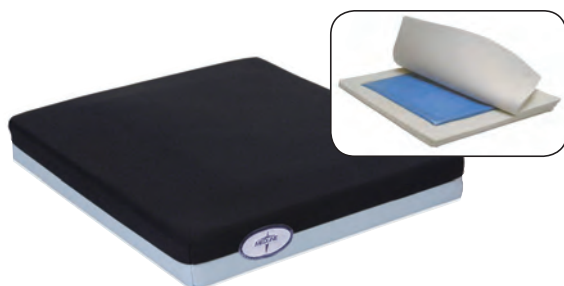


### The Support Pro Has a Rounded Bottom to Reduce Wheelchair "Hammock" Effect

Add comfort and support to any wheelchair with the Support Pro cushion. The polyurethane cover is waterproof, easy-to-clean, and designed for pressure reduction. Comfort features include two-density HR foam, a waterfall front, coccyx cutout and a tapered, zero elevation design.

CUSHION	SEAT W X D X H INCHES (CM)
<b>MDTSPZEC1616</b>	16 x 16 x 3 (41 x 41 x 8)
<b>MDTSPZEC1618</b>	16 x 16 x 3 (41 x 41 x 8)
<b>MDTSPZEC1816</b>	18 x 16 x 3 (46 x 41 x 8)
<b>MDTSPZEC2018</b>	20 x 18 x 3 (51 x 46 x 8)

# Basic | PRESSURE REDISTRIBUTION CUSHIONS

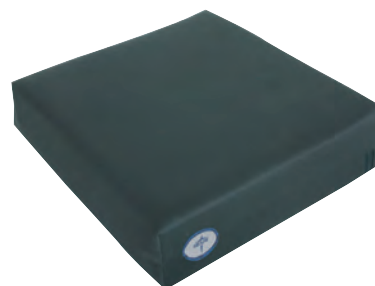


## Medline 2" Gel Foam Cushion

The Medline pressure reduction gel foam seat cushion is an economical seating surface that provides both comfort and pressure reduction. The gel pack placed between two layers of soft foam helps to redistribute pressure away from bony prominences. Features an easy-to-clean fluid proof cover.

HCPCS Code: E2601

CUSHION	SEAT W X D X H INCHES (CM)
<b>MSCPRC21616</b>	16 x 16 x 2 (41 x 41 x 5)
<b>MSCPRC21816</b>	18 x 16 x 2 (46 x 41 x 5)
<b>MSCPRC21818</b>	18 x 18 x 2 (46 x 46 x 5)
<b>MSCPRC22016</b>	20 x 16 x 2 (51 x 41 x 5)



## Medline Comfort Cushion

The Medline Comfort Cushion adds comfort and support to any wheelchair. The 3" soft foam cushion helps reduce pressure points and is perfect for the user that has low to moderate risk of skin breakdown. Features a fluid-proof, easy-to-clean cover.

HCPCS Code: E2601

CUSHION	SEAT W X D X H INCHES (CM)
<b>MSCCOMF1616</b>	16 x 16 x 3 (41 x 41 x 8)
<b>MSCCOMF1618</b>	16 x 18 x 3 (41 x 46 x 8)
<b>MSCCOMF1816</b>	18 x 16 x 3 (46 x 41 x 8)
<b>MSCCOMF1818</b>	18 x 18 x 3 (46 x 46 x 8)
<b>MSCCOMF2016</b>	20 x 16 x 3 (51 x 41 x 8)
<b>MSCCOMF2018</b>	20 x 18 x 3 (51 x 46 x 8)

HCPCS Code: E2602

CUSHION	SEAT W X D X H INCHES (CM)
Larger sizes	
<b>MSCCOMF2218</b>	22 x 18 x 3 (56 x 46 x 8)
<b>MSCCOMF2418</b>	24 x 18 x 3 (61 x 46 x 8)

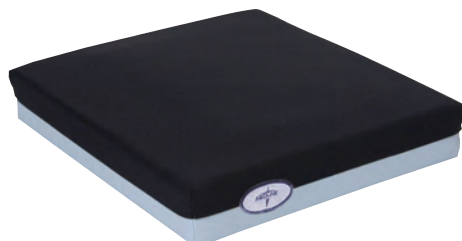


## Medline Gel/Foam Pommel Cushion

The pommel cushion is designed to help properly position and align the hips. Center pommel keeps patient's knees separated to reduce skin shear and increase air circulation. The gel pack helps reduce pressure and the foam provides stability and support. Nylex cover is easy-to-clean.

CUSHION	SEAT W X D INCHES (CM)
<b>MSC263PM1616</b>	16 x 16 (41 x 41)
<b>MSC263PM1816</b>	18 x 16 (46 x 41)
<b>MSC263PM1818</b>	18 x 16 (46 x 46)
<b>MSC263PM2016</b>	20 x 18 (51 x 41)

# Bariatric | PRESSURE REDISTRIBUTION CUSHIONS



## Medline Nylex-Covered Bariatric Gel/Foam

Designed for both comfort and function, Nylex-covered gel/foam cushion utilizes a gel pack placed between two layers of resilient foam to stabilize wheelchair patients while reducing pressure. This value-priced cushion has a 700 lb (317.5 kg) weight capacity.

CUSHION	SEAT W X D X H - INCHES (CM)
<b>MSC26320184</b>	20 x 18 x 4 (51 x 46 x 10)
<b>MSC26320204</b>	20 x 20 x 4 (51 x 51 x 10)
<b>MSC26322184</b>	22 x 18 x 4 (56 x 46 x 10)
<b>MSC26322204</b>	22 x 20 x 4 (56 x 51 x 10)
<b>MSC26324184</b>	24 x 18 x 4 (61 x 46 x 10)
<b>MSC26324204</b>	24 x 20 x 4 (61 x 51 x 10)
<b>MSC26326184</b>	26 x 18 x 4 (66 x 46 x 10)
<b>MSC26326204</b>	26 x 20 x 4 (66 x 51 x 10)
<b>MSC26328184</b>	28 x 18 x 4 (71 x 46 x 10)
<b>MSC26328204</b>	28 x 20 x 4 (71 x 51 x 10)



# Accessories

MADE FOR COMFORT

## Combo Cushion

Medline's combination seat and back cushion features high resiliency convoluted molded foam that incorporates Progressive Support Technology (PST) to ensure the proper degree of cushion firmness for the highest possible pressure relief. Hook and loop strap to secure cushion to wheelchair. Cover is removable, washable and flame retardant.

SIDEMINDER	SEAT W X D INCHES (CM)
<b>MSCCOMB1616</b>	16 x 16 (41 x 41)
<b>MSCCOMB1816</b>	18 x 16 (46 x 41)
<b>MSCCOMB2018</b>	20 x 18 (51 x 46)
<b>MSCCOMB2218</b>	22 x 18 (56 x 46)
<b>MSCCOMB2418</b>	24 x 18 (61 x 46)



## SideMinder

As a fully adjustable lateral support, the SideMinder is recommended for users with moderate to severe impairment in their ability to maintain proper posture. This support is available with either standard or contoured lateral pads that adjust horizontally or vertically. For even the most difficult to correct postural asymmetries, the SideMinder is fully functional support.

SIDEMINDER	DESCRIPTION INCHES (CM)
<b>MDTSDMDR</b>	Fits 16-24 (41-61) wheelchairs



## The Molded Foot

The Molded Foot offers a comfortable foot support designed with high quality polyurethane foam. It includes a rigid insert molded into the base for additional support. The molded foot can be attached to the wheelchair with straps or by bolting it directly to the foot plate.

MOLDED FOOT	DESCRIPTION
<b>MSCMLDFT</b>	Molded Foot



## The Molded Arm

An ergonomically designed, cost-effective solution for users with arm issues. In addition to stabilizing the elbow, it features a convex palm area for user comfort as well as a gentle rise in elevation from elbow to fingertips help to prevent edema. Lightweight interlock bracket system locks down to either 3/4" or 7/8" tubing using a 2-bolt connection.

MOLDED ARM	DESCRIPTION
<b>MSCMLDARML</b>	Left Side
<b>MSCMLDARMR</b>	Right Side



## Comfort Lap Tray

The Comfort Half Lap Tray is available as either an interlock or slide-on mount. The flip-up half lap pivots upward to allow users to easily enter and exit the wheelchair. With the slide-on mount option, the lap tray can be easily installed or removed. Also available in a full lap tray



MSCMLAPTRYL



MSCMEDLAPTRAY

TRAY	DESCRIPTION
<b>MSCMLAPTRYL</b>	Left Half
<b>MSCMLAPTRYR</b>	Right Half
<b>MSCMEDLAPTRAY</b>	Full Lap

## Medline Back Cushion

The Medline Back Cushion is a comfortable support cushion that fits in front of a standard wheelchair back, eliminating the hammock effect of a sling back. Two layers of high density foam provide support for the entire back. The ShearX all-way stretch cover reduces skin shear and is fluid-proof. Straps onto the wheelchair and is easy to remove.

HCPCS Code: E2611

BACK CUSHION	FITS WHEELCHAIR SIZE - INCHES (CM)
With Lumbar Support	
<b>MSCBL16</b>	16 (41)
<b>MSCBL18</b>	18 (46)
<b>MSCBL20</b>	20 (51)
Without Lumbar Support	
<b>MSCB16</b>	16 (41)
<b>MSCB18</b>	18 (46)
<b>MSCB20</b>	20 (51)

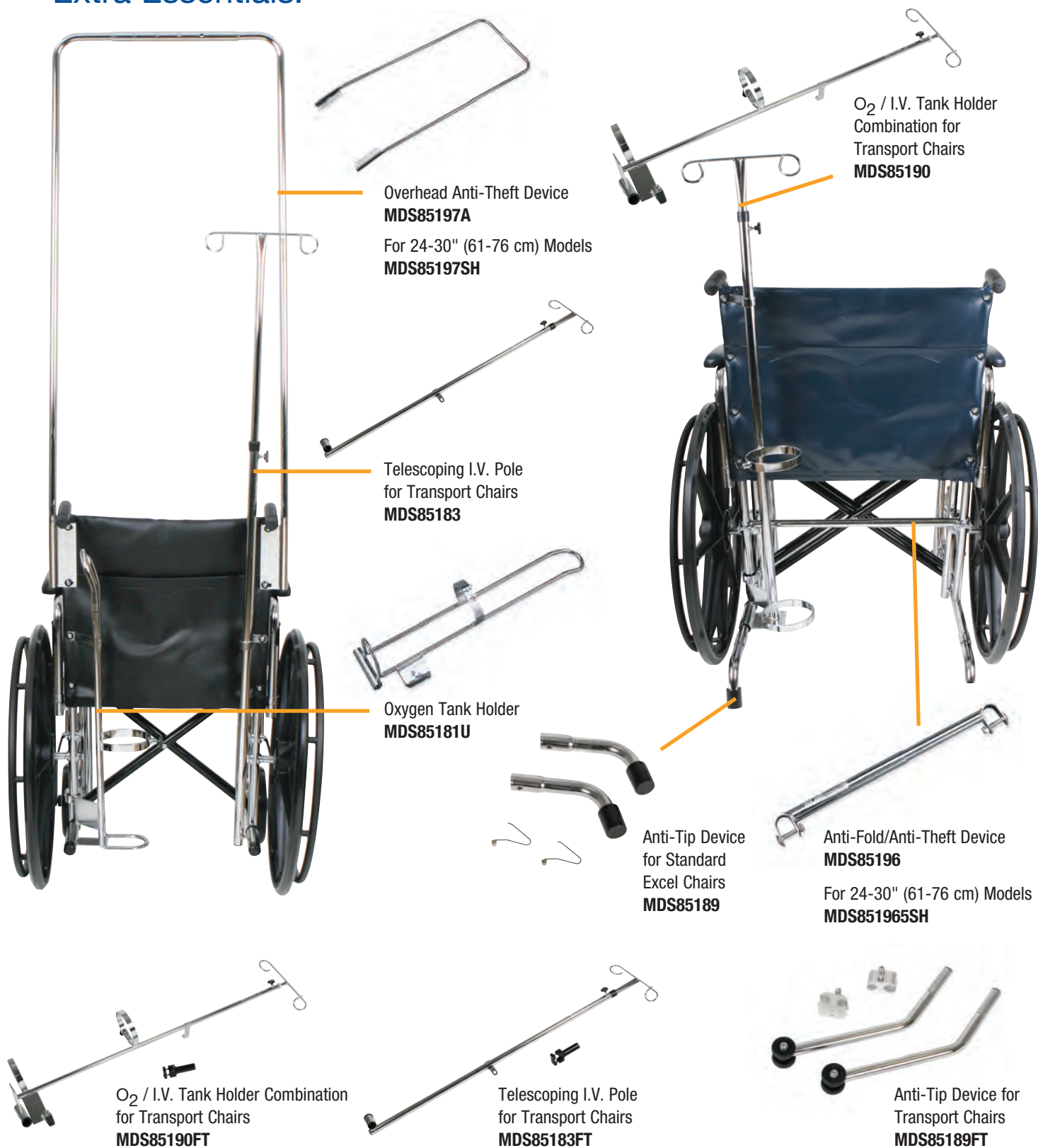


MSCB18

# Accessories

SEE INDIVIDUAL WHEELCHAIRS FOR DETAILS

## Extra Essentials!







Height Adjustable Removable  
Full-Length Arms for Standard Excel  
**WCA806967**

Height Adjustable Removable  
Desk-Length Arms for Standard Excel  
**WCA806966** (not shown above)



Height Adjustable Removable  
Full-Length Arms For K4  
**WCA806963K4**

Height Adjustable Removable  
Desk-Length Arms For K4  
**WCA806962K4**



PRECISE® Hospital Foam  
Cleaner/ Disinfectant  
**CLH40513**

**Additional Accessories**  
Ask your Medline representative  
for information on the  
accessories listed below.

Tool Kit  
**WCA806905**

Seat Extension for  
18" (46 cm) K4 & 3000  
**WCA806922EXT**

3000 Transport Kit  
**WCAWHEELKIT**

Wheelchair Box  
**MDS33X13X38**

Delta Push Bar for  
22" (56 cm) Wide Chairs  
**MDS85192**

60" (152 cm) Auto-Style Seat Belt  
**WCATQ4025BLK**

Elevated Legrests with  
Composite Footplates  
and Black Vinyl Calf Pads  
**WCA806985HCMP**

Elevated Legrests with  
Aluminum Footplates  
(No Calf Pads)  
**WCA806985HEMI**

Swing Away Legrests  
with Composite Footplates  
**WCA806965HCMP**

Swing Away Legrests  
with Aluminum Footplates  
**WCA806965HEMI**

Super Hemi Kit  
1000, 2000, 3000, K4  
**MDS85195**

Heel Loops, 1 Pair  
**WCATQ5014BLK**



Pneumatic Front Caster  
for Standard Excel  
**WCA806930P**



Tinnerman Legrest Locks, pair  
(For preventing theft of leg riggings)  
**WCA806991**



Medline Clamp on Drink Holder  
**WCACUP**



Flat-Free Tire for Standard Excel  
**WCA806947P** —  
other 18" (46 cm) Chairs  
**WCA806947PQR** for K4



Articulating Legrest  
for Hemi-Legrests  
**WCA806985ART**



Anti-Tip Device  
for K4 and Recliner  
**MDS85189WK4**



One Arm Drive K4 18" (46 cm)  
and 16" (41 cm) only.  
Default of right hand operation  
**MDSK41RMDRIVE**



Wheel Lock Handle Extension  
**MDS85157PR**

# Medline Wheelchairs

## QUICK LOOK GUIDE

Model	Seat Width INCHES (CM)	Seat Depth INCHES (CM)	Seat Material	Back Height INCHES (CM)	Seat to Floor INCHES (CM)	Overall Width INCHES (CM)	Weight w/o Riggings LB (KG)	Weight Cap. LB (KG)
<b>Excel 2000</b>	16, 18, 20 (41, 46, 51)	16 (41)	Vinyl	16 (41)	16*, 18, 20 (41*, 46, 51)	Add 7.5" (19)	38 (17)	300 (136)
<b>Excel Hybrid</b>	16, 18 (41, 46)	16 (41)	Vinyl	16 (41)	20 (51)	Add 7.5" (19)	38 (17)	300 (136)
<b>Excel Hybrid 2</b>	16, 18 (41, 46)	16 (41)	Nylon	16 (41)	20 (51)	Add 7.5" (19)	33 (15)	300 (136)
<b>Excel K1 Basic</b>	16, 18, 20 (41, 46, 51)	16 (41)	Nylon	16 (41)	18, 20 (46, 51)	Add 7.5" (19)	38 (17)	300 (136)
<b>Excel K3</b>	16, 18 (41, 46)	16 (41)	Nylon	16 (41)	16*, 18, 20 (41*, 46, 51)	Add 7.5" (19)	35 (16)	300 (136)
<b>Excel K4</b>	16, 18, 20, 22 (41, 46, 51, 56)	16, 18** (41, 46**)	Nylon	16, 17, 18 (41, 43, 46)	16*, 18, 20 (41*, 46, 51)	Add 7.5" (19)	31.5 (14)	300, 350 (136, 159)
<b>Excel K4 Basic</b>	16, 18, 20 (41, 46, 51)	16, 18** (41, 46**)	Nylon	16, 17, 18 (41, 43, 46)	16*, 18, 20 (41*, 46, 51)	Add 7.5" (19)	34 (15.5)	300 (136)
<b>Excel Extra-Wide</b>	20, 22, 24 (51, 56, 61)	18 (46)	Vinyl	16 (41)	18, 20 (46, 51)	Add 7.5" (19)	58 (26)	350, 450 (159, 204)
<b>Excel Shuttle</b>	24, 26, 28 (61, 66, 71)	20 (51)	Nylon	16 (41)	18, 19, 20 (46, 48, 51)	Add 8" (20)	88 (40)	700 (318)
<b>Excel Kidz</b>	14 (36)	12 (30)	Vinyl	17 (43)	14, 16 (36, 41)	Add 8" (20)	30 (15.5)	250 (113)
<b>Excel Recliner</b>	16, 18, 20, 22 (41, 46, 51, 56)	17 (43)	Vinyl	22 (56)	16*, 18, 20 (41*, 46, 51)	Add 8" (20)	44 (20)	300, 350 (136, 159)
<b>Freedom/ Freedom 2</b>	19 (48)	16 (41)	Nylon	16 (41)	18 (46)	Add 4" (10)	14.8 (7)	300 (136)
<b>Freedom Plus</b>	22 (56)	18 (46)	Vinyl	16 (41)	20 (51)	Add 4" (10)	33 (15)	400 (181)
<b>Standard Aluminum Transport</b>	19 (48)	16 (41)	Nylon	16 (41)	18 (46)	Add 4" (10)	19 (8.5)	300 (136)
<b>Deluxe Aluminum Transport</b>	19 (48)	16 (41)	Nylon	16 (41)	18 (46)	Add 4" (10)	23 (10.5)	300 (136)
<b>Excel Translator</b>	19 (48)	16 (41)	Nylon	NA	20 (51)	Add 4" (10)	18 (8)	250 (113)
<b>Steel Transport</b>	19 (48)	16 (41)	Nylon	16 (41)	18 (46)	Add 4" (10)	25 (12)	300 (136)
<b>Basic Steel Transport</b>	19 (48)	16 (41)	Nylon	16 (41)	18 (46)	Add 4" (10)	24 (11)	300 (136)

\* Adjustable to 16" (41cm) height with super hemi kit MDS85195

\*\* Seat Depth adjustable to 18" (46cm) with WCA806922EXT seat extension kit. Only fits 18" (46cm) wide chairs with larger seat rail frame.  
20" (51cm) and 22" (56cm) K4 come with 18" (46cm) deep seat.



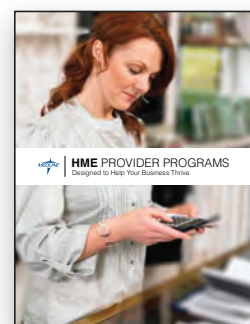
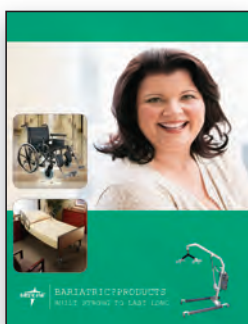
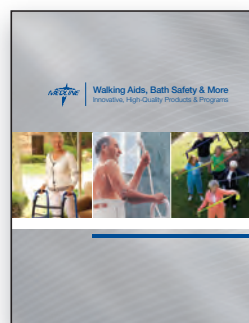
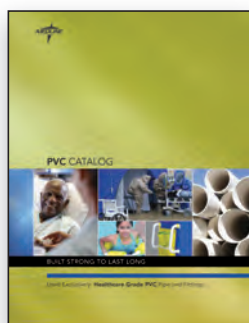
# HCPCS Definitions | QUICK REFERENCE

Code	Coverage Criteria	Coding Guidelines	Medline Wheelchairs
<b>K0001</b>	Basic coverage criteria met	Wheelchair weight: Greater than 36 lbs Seat height: 19" or greater Seat depth and width = 15" or greater Wheels large enough and positioned to propel by user Weight capacity: 250 lbs or less	Excel 2000 K1 Basic Excel Hybrid Excel Narrow
<b>K0002</b>	Basic coverage criteria met Patient requires lower seat height (17" to 18") because of short stature, or To enable patient to place feet on ground for propulsion	Weight: Greater than 36 lbs Seat height: Less than 19" Seat depth and width = 15" or greater Wheels large enough and positioned to propel by user Weight capacity: 250 lbs or less	Excel 2000 K1 Basic Excel Narrow
<b>K0003</b>	Basic coverage criteria met Patient cannot self-propel in standard wheelchair in home Patient can and does self-propel in lightweight wheelchair	Weight: 34-36 lbs Seat depth and width = 15" or greater Wheels large enough and positioned to propel by user Weight capacity: 250 lbs or less	Excel K3 20" K4 Basic 16"-20" Recliner
<b>K0004</b>	Basic coverage criteria met Self-propels wheelchair while engaging in frequent activities in home that cannot be performed in standard or lightweight wheelchair Requires seat width, depth, or height that cannot be accommodated in standard, lightweight or hemi-wheelchair (spends at least two hours per day in wheelchair)	Weight: Less than 34 lbs Seat depth and width = 15" or greater Wheels large enough and positioned to propel by user Lifetime warranty on side frames and crossbraces	Excel K4 K4 Basic Excel Hybrid 2
<b>K0005</b>	Basic coverage criteria met Coverage determined on individual consideration basis based on supporting medical documentation	Weight: Less than 30 lbs Seat depth and width = 15" or greater Wheels large enough and positioned to propel by user Adjustable rear axle position Lifetime warranty on side frames and crossbraces	Coming Soon!
<b>K0006</b>	Basic coverage criteria met Patient weighs more than 250 lbs or Patient has severe spasticity	Weight capacity: Greater than 250 lbs Seat depth and width = 15" or greater Wheels large enough and positioned to propel by user	20" K1 Basic
<b>K0007</b>	Basic coverage criteria met Patient weighs more than 300 lbs	Weight capacity: greater than 300 lbs Seat depth and width = 15" or greater Wheels large enough and positioned to propel by user	Excel Extra-Wide Excel Shuttle
<b>E1229</b>	Basic coverage criteria met	Manual wheelchair with a seat with and/or seat depth of 14" or less	Excel Kidz Pediatric
<b>E0143</b>	Basic coverage criteria me	Walker, folding, wheeled, adjustable or fixed height	Translator (use both codes when billing)
<b>E0156</b>	Basic coverage criteria met	Seat attachment, Walker	

HCPCS Disclaimer: HCPCS codes and Home Health Consolidated Billing codes provided by Medline are intended as general guidelines only. Medline does not guarantee coverage or reimbursement of any products. You must address all coverage and reimbursement issues (including the correctness and accuracy of codes) with your individual payers. It is your responsibility to ensure the accuracy and appropriateness of each claim you submit, in accordance with all applicable payer requirements. Rev 09092010

## GET ALL THE DETAILS

Contact your Medline sales representative for one of our other great catalogs and to find out how we can help you with your durable medical equipment needs.



## Use only GENUINE MEDLINE PARTS

Keep your Medline wheelchair running in top shape by using only genuine Medline parts. Ask your Medline sales representative for a parts catalog containing easy-to-read exploded view diagrams for all of our chairs.



Medline.com has tons of resources and is your portal to online ordering and your account information.



- Download a QR code reader app
- Launch app
- Hover the phone over this QR code

[www.medline.com](http://www.medline.com)



### Medline Industries, Inc.

One Medline Place  
Mundelein, IL 60060

**Medline United States**  
**1-800-MEDLINE (633-5463)**

[www.medline.com](http://www.medline.com) | [info@medline.com](mailto:info@medline.com)

**Medline Canada**  
**1-800-396-6996**

[www.medline.ca](http://www.medline.ca) | [canada@medline.com](mailto:canada@medline.com)

**Medline México**  
**01-800-831-0898**

[www.medlinemexico.com](http://www.medlinemexico.com) | [mexico@medline.com](mailto:mexico@medline.com)

Some products may not be available for sale in Mexico or Canada. Please contact your Account Representative for additional information.

We reserve the right to correct any errors that may occur within this catalog. ©2011 Medline Industries, Inc. Medline is registered trademark of Medline Industries, Inc. Excel® is a registered trademark of Medline Industries, Inc., Quadra3D® is a registered trademark of Marken International, Inc. Quadro Select® is a registered trademark of Roho, Inc., MICROBAN is a registered trademark of Microban Products Company.

MKT211252 / LIT024 / 10M / SG / 22